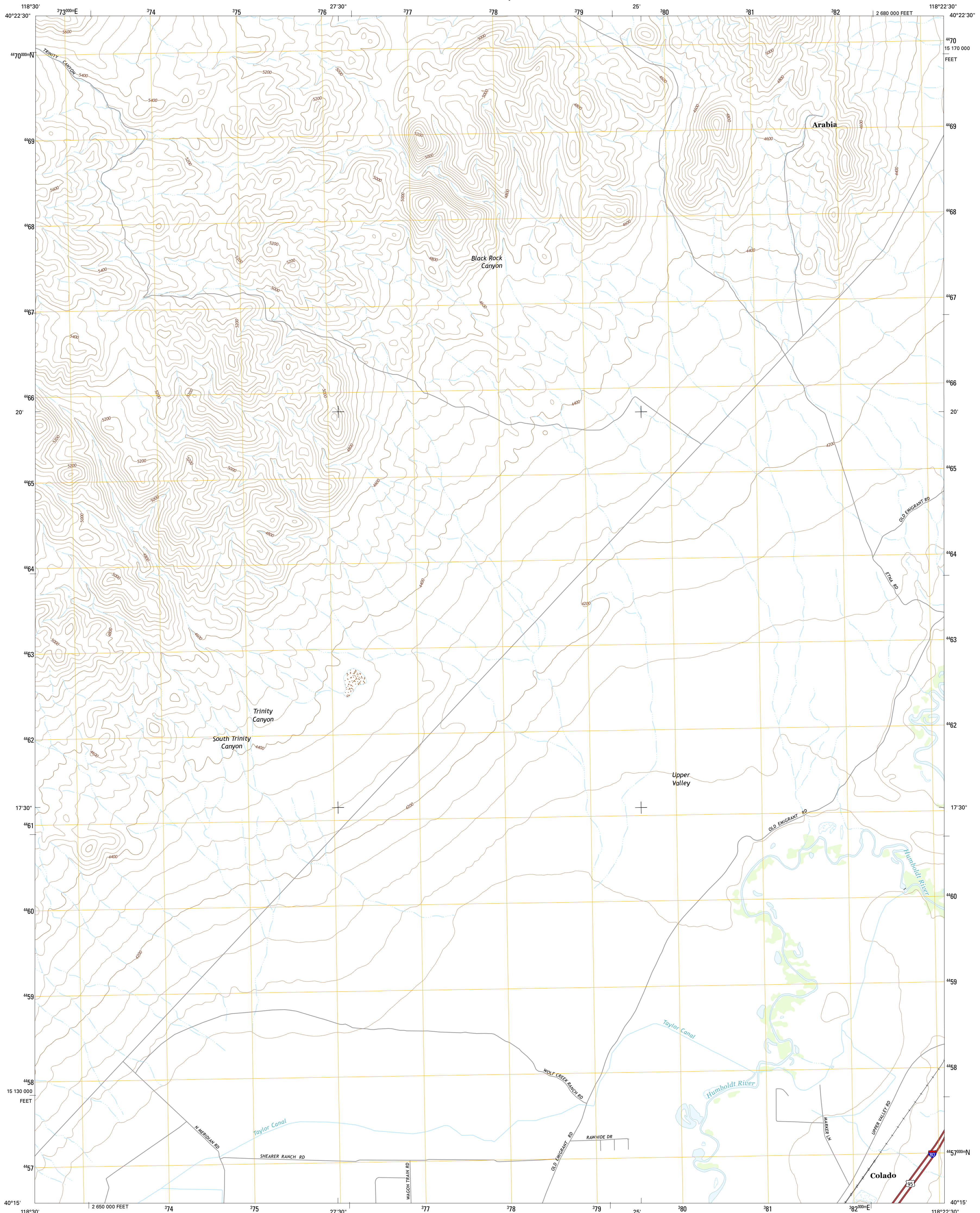




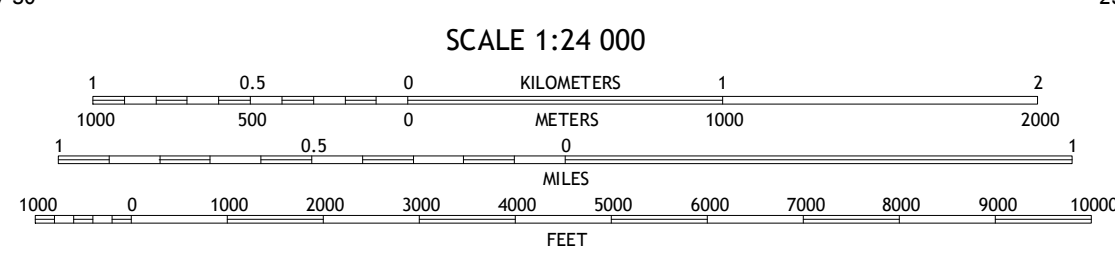
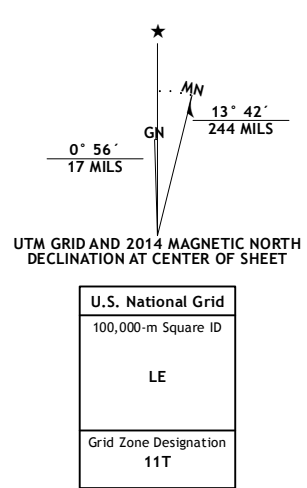
U.S. DEPARTMENT OF THE INTERIOR
U.S. GEOLOGICAL SURVEY



ARABIA QUADRANGLE
NEVADA-PERSHING CO.
7.5-MINUTE SERIES



Produced by the United States Geological Survey
 North American Datum of 1983 (NAD83)
 World Geodetic System of 1984 (WGS84), Projection and
 1 000-meter grid: Universal Transverse Mercator, Zone 11T
 10 000-foot ticks: Nevada Coordinate System of 1983 (west
 zone)
 This map is not a legal document. Boundaries may be
 generalized for this map scale. Private lands within government
 reservations may not be shown. Obtain permission before
 entering private lands.
 Imagery.....NAIP, July 2013
 Roads.....HERE, ©2013
 Names.....GNIS, 2013
 Hydrography.....National Hydrography Dataset, 2013
 Contours.....National Elevation Dataset, 1999
 Boundaries.....Multiple sources; see metadata file 1972 - 2014
 Public Land Survey System.....BLM, 2011



ROAD CLASSIFICATION

Expressway	Local Connector
Secondary Hwy	Local Road
Ramp	4WD
Interstate Route	US Route
	State Route

ADJOINING QUADRANGLES

1	2	3
4	5	6
7	8	

1 Natchez Spring
 2 Oreana NW
 3 Rye Patch Dam
 4 Piker Brown Spring
 5 Oreana
 6 West of Lovelock
 7 Lovelock
 8 Coal Canyon

ARABIA, NV
2014