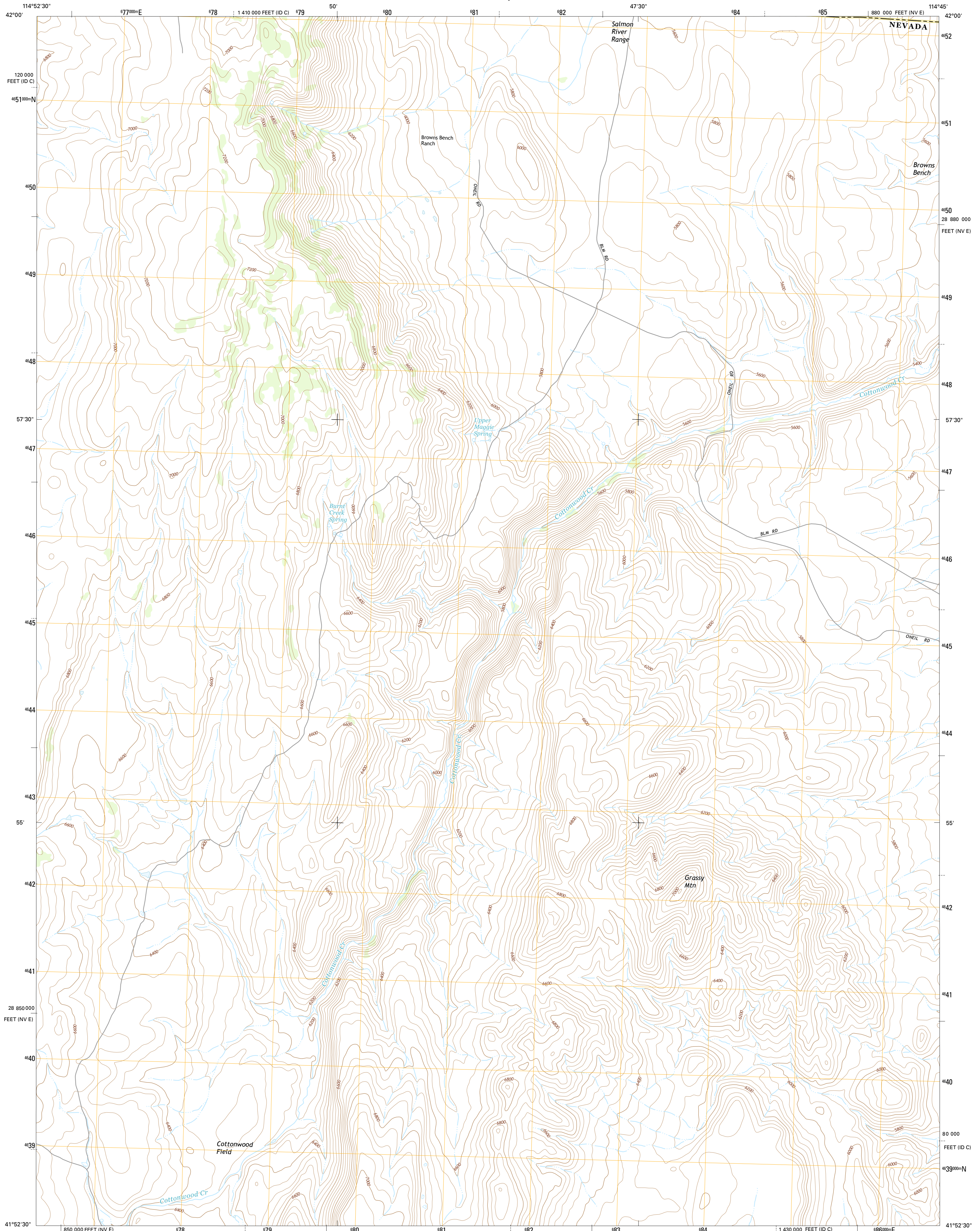




U.S. DEPARTMENT OF THE INTERIOR
U.S. GEOLOGICAL SURVEY



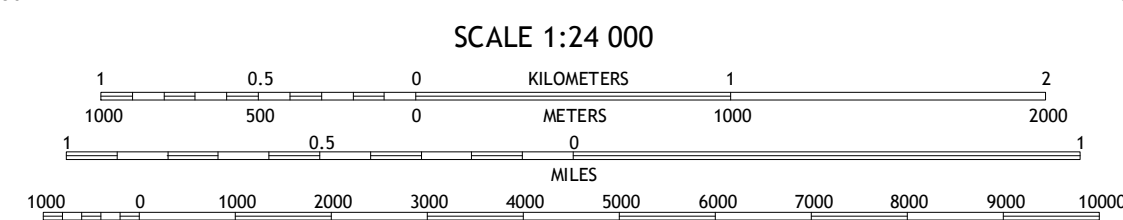
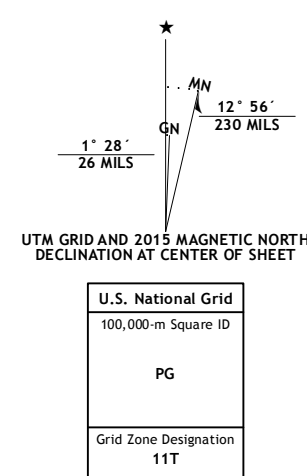
BROWNS BENCH RANCH QUADRANGLE
NEVADA-IDAHO
7.5-MINUTE SERIES



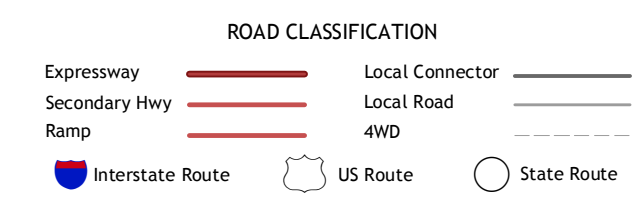
Produced by the United States Geological Survey
North American Datum of 1983 (NAD83)
World Geodetic System of 1984 (WGS84), Projection and
1 000-meter grid; Universal Transverse Mercator, Zone 11T
10 000-foot ticks: Nevada Coordinate System of 1983 (east
zone), Idaho Coordinate System of 1983 (central zone)

This map is not a legal document. Boundaries may be
generalized for this map scale. Private lands within government
reservations may not be shown. Obtain permission before
entering private lands.

Imagery:.....NAIP, July 2013 - August 2013
Roads:.....HERE, 2013
Names:.....GNIS, 2013
Hydrography:.....National Hydrography Dataset, 2013
Contours:.....National Elevation Dataset, 2002
Boundaries:.....Multiple sources; see metadata file 1972-2014
Public Land Survey System:.....BLM, 2011



CONTOUR INTERVAL 40 FEET
NORTH AMERICAN VERTICAL DATUM OF 1988
This map was produced to conform with the
National Geospatial Program US Topo Product Standard, 2011.
A metadata file associated with this product is draft version 0.6.18



1	2	3
4	5	6
7	8	

ADJOINING QUADRANGLES

1 Taylor Canyon
2 Browns Bench South
3 Norton Canyon
4 Bear Mountain
5 Jackpot
6 Twin Meadows Ranch
7 Contact
8 Middle Stack Mountain

BROWNS BENCH RANCH, NV-ID
2015