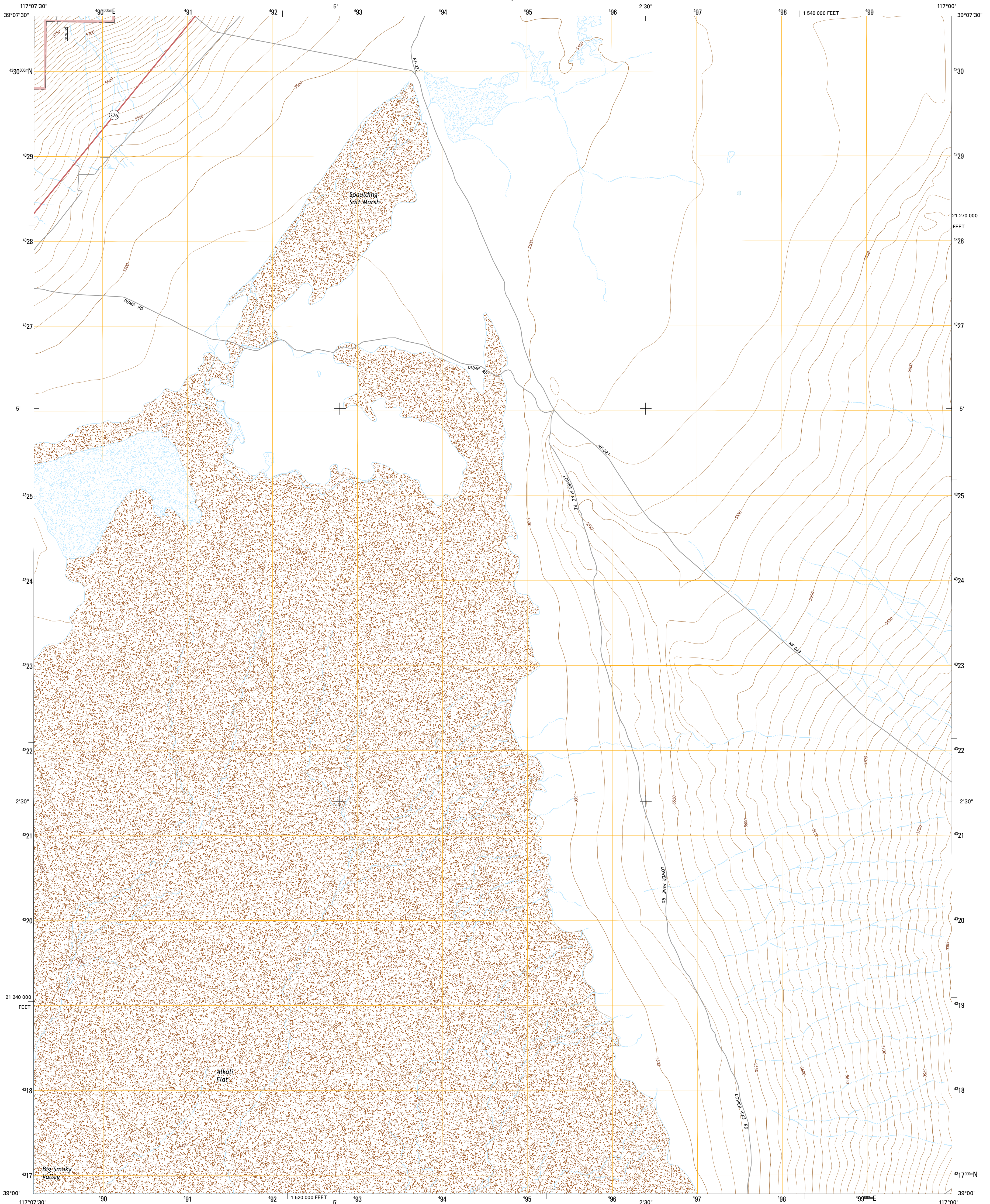




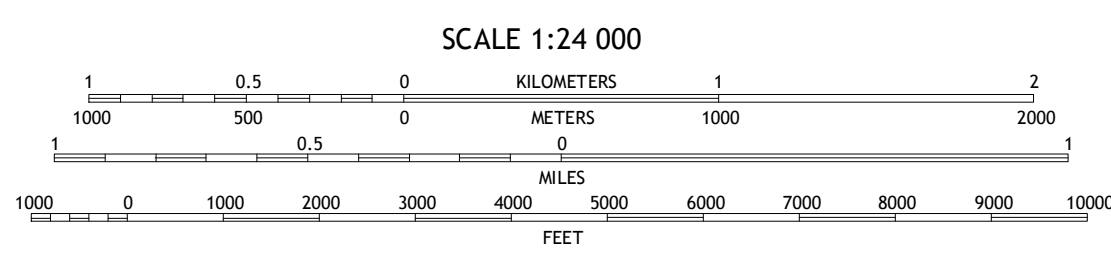
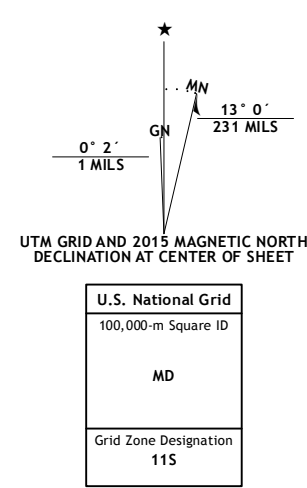
U.S. DEPARTMENT OF THE INTERIOR  
U.S. GEOLOGICAL SURVEY



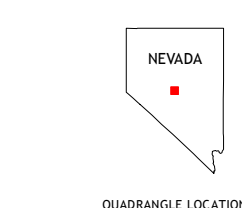
EAST OF MILLETT RANCH QUADRANGLE  
NEVADA-NYE CO.  
7.5-MINUTE SERIES



**Produced by the United States Geological Survey**  
 North American Datum of 1983 (NAD83)  
 World Geodetic System of 1984 (WGS84), Projection and  
 1 000-meter grid: Universal Transverse Mercator, Zone 11S  
 10 000-foot ticks: Nevada Coordinate System of 1983 (central  
 zone)  
 Imagery.....NAIP, August 2013  
 Roads.....HERE, ©2013  
 Roads within US Forest Service Lands.....FS Topo Data  
 with limited Forest Service updates, 2013  
 Names.....GNIS, 2013  
 Hydrography.....National Hydrography Dataset, 2013  
 Contours.....National Elevation Dataset, 2001  
 Boundaries.....Multiple sources; see metadata file 1972 - 2014  
 Public Land Survey System.....BLM, 2011



CONTOUR INTERVAL 10 FEET  
 NORTH AMERICAN VERTICAL DATUM OF 1988  
 This map was produced to conform with the  
 National Geospatial Program US Topo Product Standard, 2011.  
 A metadata file associated with this product is draft version 0.6.18



**ROAD CLASSIFICATION**

Expressway	Local Connector
Secondary Hwy	Local Road
Ramp	4WD
Interstate Route	US Route
FS Primary Route	FS Passenger Route
	State Route
	FS High Clearance Route

1	2	3
4	5	6
7	8	

ADJOINING QUADRANGLES

Check with local Forest Service unit  
for current travel conditions and restrictions.

**EAST OF MILLETT RANCH, NV**  
2015