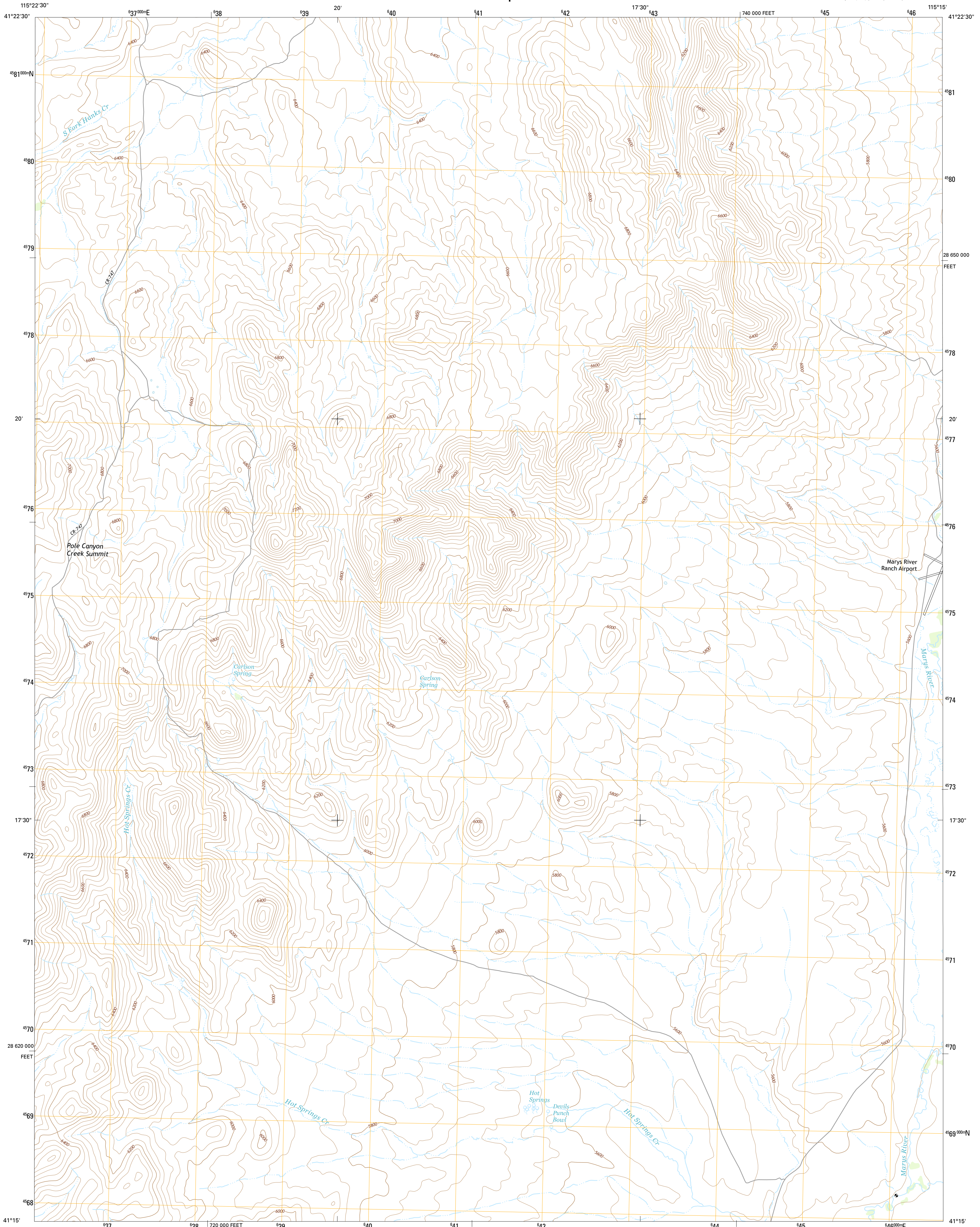




U.S. DEPARTMENT OF THE INTERIOR
U.S. GEOLOGICAL SURVEY

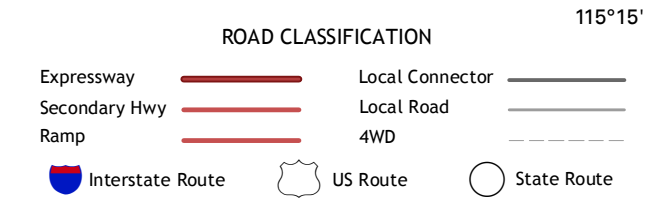
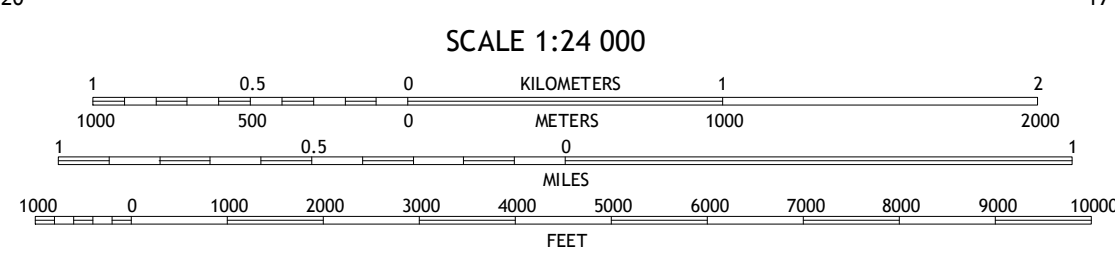
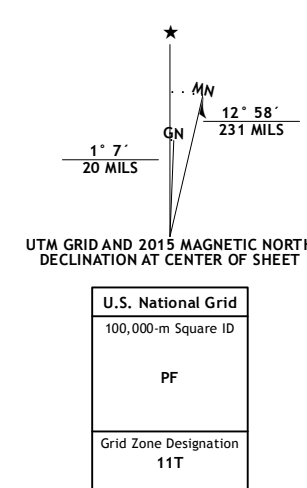


HOT SPRINGS CREEK QUADRANGLE
NEVADA-ELKO CO.
7.5-MINUTE SERIES



Produced by the United States Geological Survey
 North American Datum of 1983 (NAD83)
 World Geodetic System of 1984 (WGS84), Projection and
 1000-meter grid: Universal Transverse Mercator, Zone 11T
 10 000-foot ticks: Nevada Coordinate System of 1983 (east zone)
 This map is not a legal document. Boundaries may be
 generalized for this map scale. Private lands within government
 reservations may not be shown. Obtain permission before
 entering private lands.

Imagery.....NAIP, July 2013 - August 2013
 Roads.....HERE, ©2013
 Names.....GNIS, 2013
 Hydrography.....National Hydrography Dataset, 2013
 Contours.....National Elevation Dataset, 1999
 Boundaries.....Multiple sources; see metadata file 1972 - 2014
 Public Land Survey System.....BLM, 2011



CONTOUR INTERVAL 40 FEET
 NORTH AMERICAN VERTICAL DATUM OF 1988

This map was produced to conform with the
 National Geospatial Program US Topo Product Standard, 2011.
 A metadata file associated with this product is draft version 0.6.18

| | | | |
|---|---|---|---------------------|
| 1 | 2 | 3 | 1 Stag Mountain |
| 4 | 5 | 6 | 2 Hanks Creek NE |
| 7 | 8 | 7 | 3 Buena Vista Ranch |
| | | 8 | 4 Hanks Creek SW |
| | | | 5 Black Butte SW |
| | | | 6 Peiko Peak |
| | | | 7 Twin Buttes |
| | | | 8 Tabor Flats |

ADJOINING QUADRANGLES

HOT SPRINGS CREEK, NV
2015