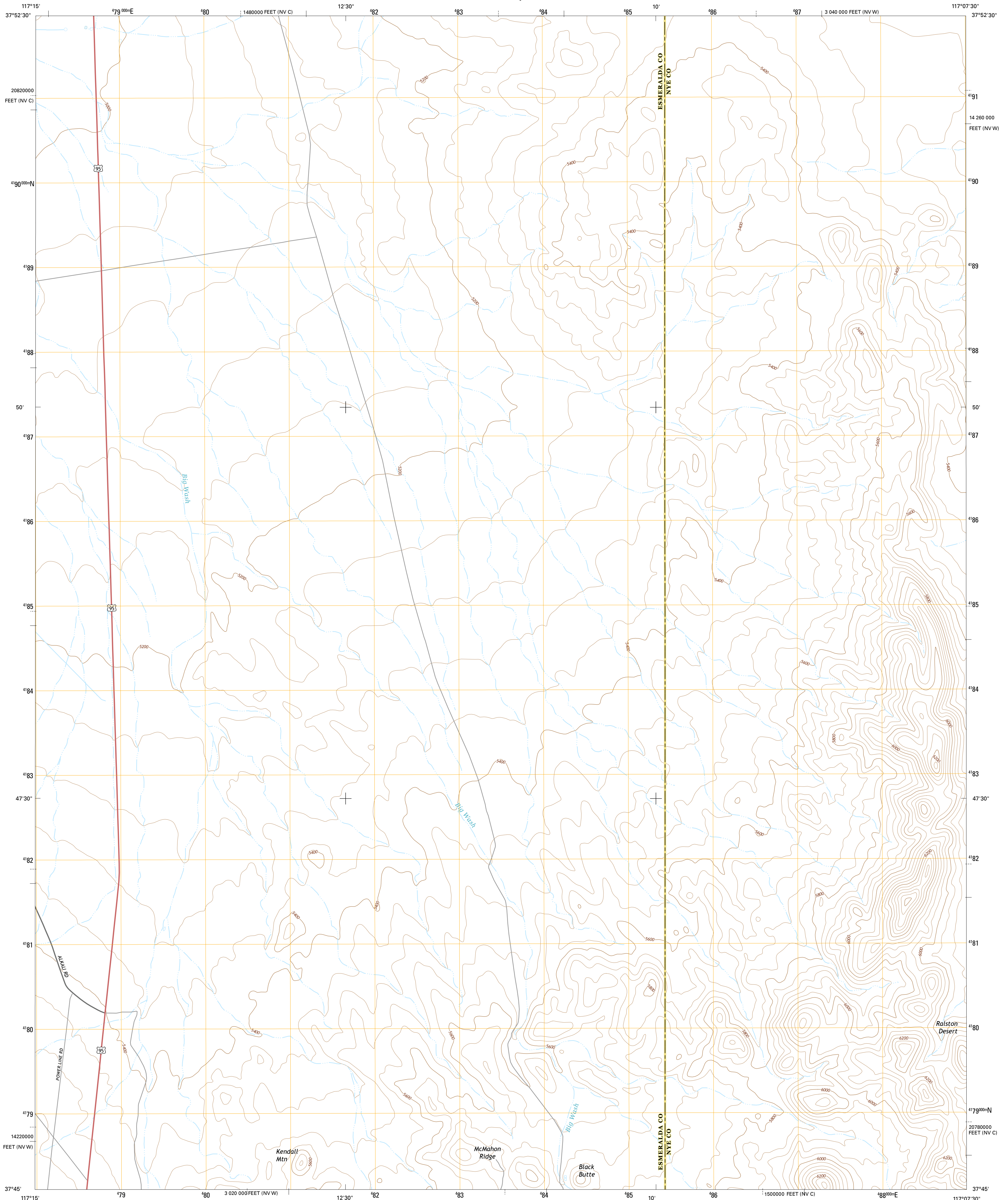




U.S. DEPARTMENT OF THE INTERIOR  
U.S. GEOLOGICAL SURVEY



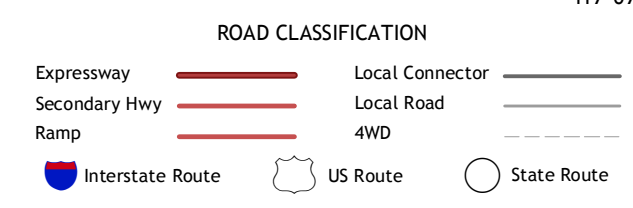
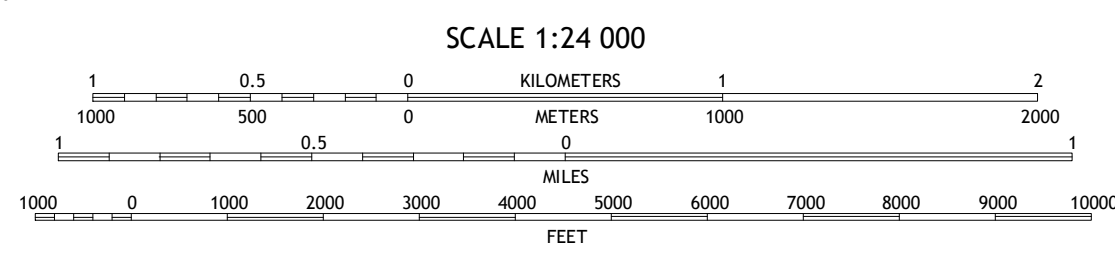
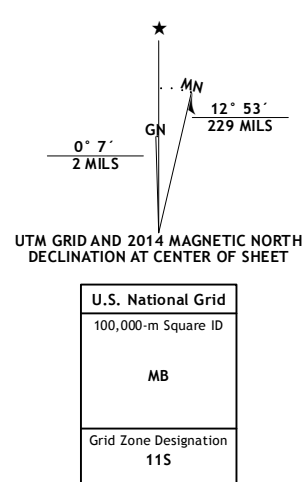
MCAHON RIDGE QUADRANGLE  
NEVADA  
7.5-MINUTE SERIES



**Produced by the United States Geological Survey**  
 North American Datum of 1983 (NAD83)  
 World Geodetic System of 1984 (WGS84). Projection and  
 1 000-meter grid: Universal Transverse Mercator, Zone 11S  
 10 000-foot ticks: Nevada Coordinate System of 1983 (west and  
 central zones)

This map is not a legal document. Boundaries may be  
 generalized for this map scale. Private lands within government  
 reservations may not be shown. Obtain permission before  
 entering private lands.

Imagery.....N.A.I.P., August 2013  
 Names.....HERE, ©2013  
 Roads.....GNIS, 2013  
 Hydrography.....National Hydrography Dataset, 2013  
 Contours.....National Elevation Dataset, 2003  
 Boundaries.....Multiple sources; see metadata file 1972 - 2014  
 Public Land Survey System.....BLM, 2011



1	2	3
4	5	6
7	8	

ADJOINING QUADRANGLES

1 Klondike  
2 Mud Lake NW  
3 Mud Lake North  
4 Alkali  
5 Mud Lake South  
6 Montezuma Peak  
7 Goldfield  
8 East of Goldfield

MCAHON RIDGE, NV  
2014