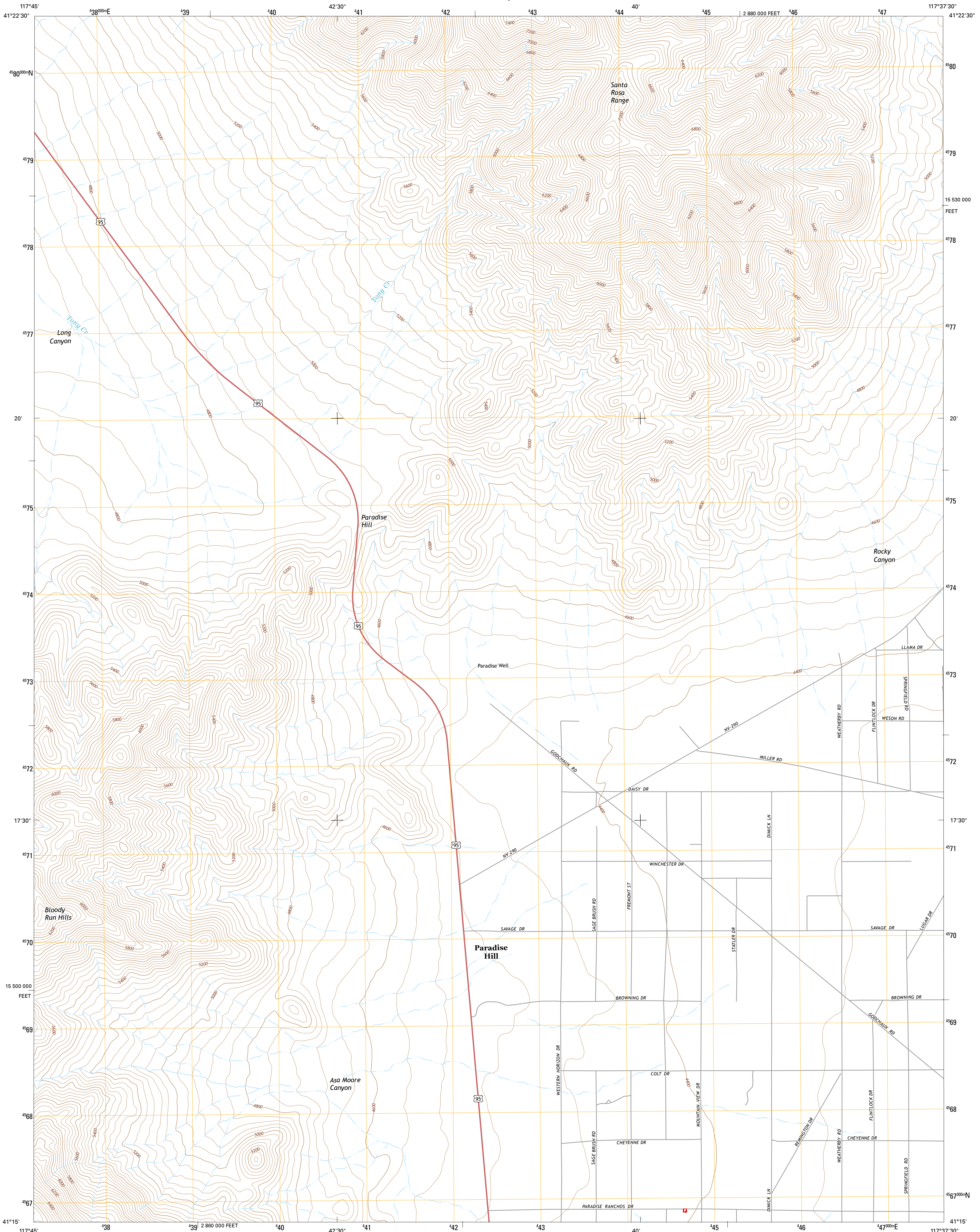




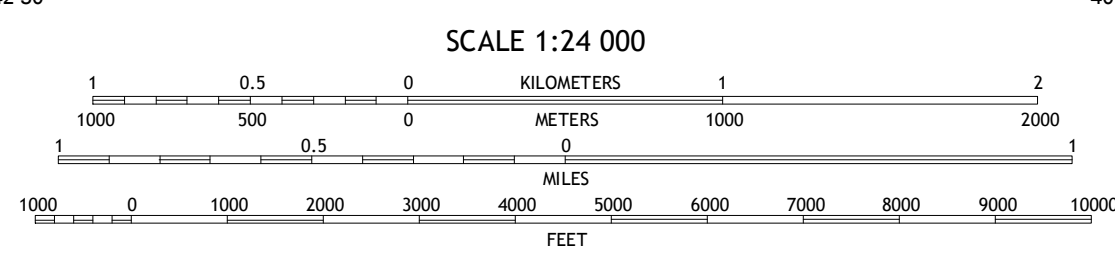
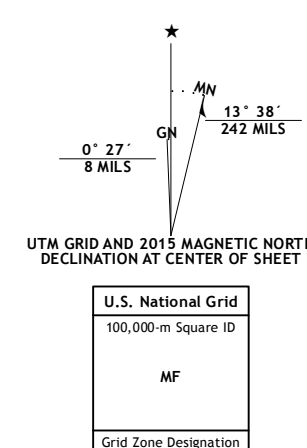
U.S. DEPARTMENT OF THE INTERIOR  
U.S. GEOLOGICAL SURVEY



PARADISE WELL QUADRANGLE  
NEVADA-HUMBOLDT CO.  
7.5-MINUTE SERIES



**Produced by the United States Geological Survey**  
 North American Datum of 1983 (NAD83)  
 World Geodetic System of 1984 (WGS84), Projection and  
 1 000-meter grid: Universal Transverse Mercator, Zone 11T  
 10 000-foot ticks: Nevada Coordinate System of 1983 (west  
 zone)  
 This map is not a legal document. Boundaries may be  
 generalized for this map scale. Private lands within government  
 reservations may not be shown. Obtain permission before  
 entering private lands.  
 Imagery.....NAIP, July 2013  
 Roads.....HERE, ©2013  
 Names.....GNIS, 2013  
 Hydrography.....National Hydrography Dataset, 2013  
 Contours.....National Elevation Dataset, 1999  
 Boundaries.....Multiple sources; see metadata file 1972 - 2014  
 Public Land Survey System.....BLM, 2011



ROAD CLASSIFICATION

Expressway	Local Connector
Secondary Hwy	Local Road
Ramp	4WD
Interstate Route	US Route
	State Route

ADJOINING QUADRANGLES

1	2	3
4	5	6
7	8	

1 Andorno Ranch  
 2 Five Fingers  
 3 Paradise Valley  
 4 West Spring Canyon  
 5 Willow Point  
 6 Bloody Run Peak  
 7 China Garden  
 8 Gumbot Lake

PARADISE WELL, NV  
2015

CONTOUR INTERVAL 40 FEET  
 NORTH AMERICAN VERTICAL DATUM OF 1988  
 This map was produced to conform with the  
 National Geospatial Program US Topo Product Standard, 2011.  
 A metadata file associated with this product is draft version 0.6.18