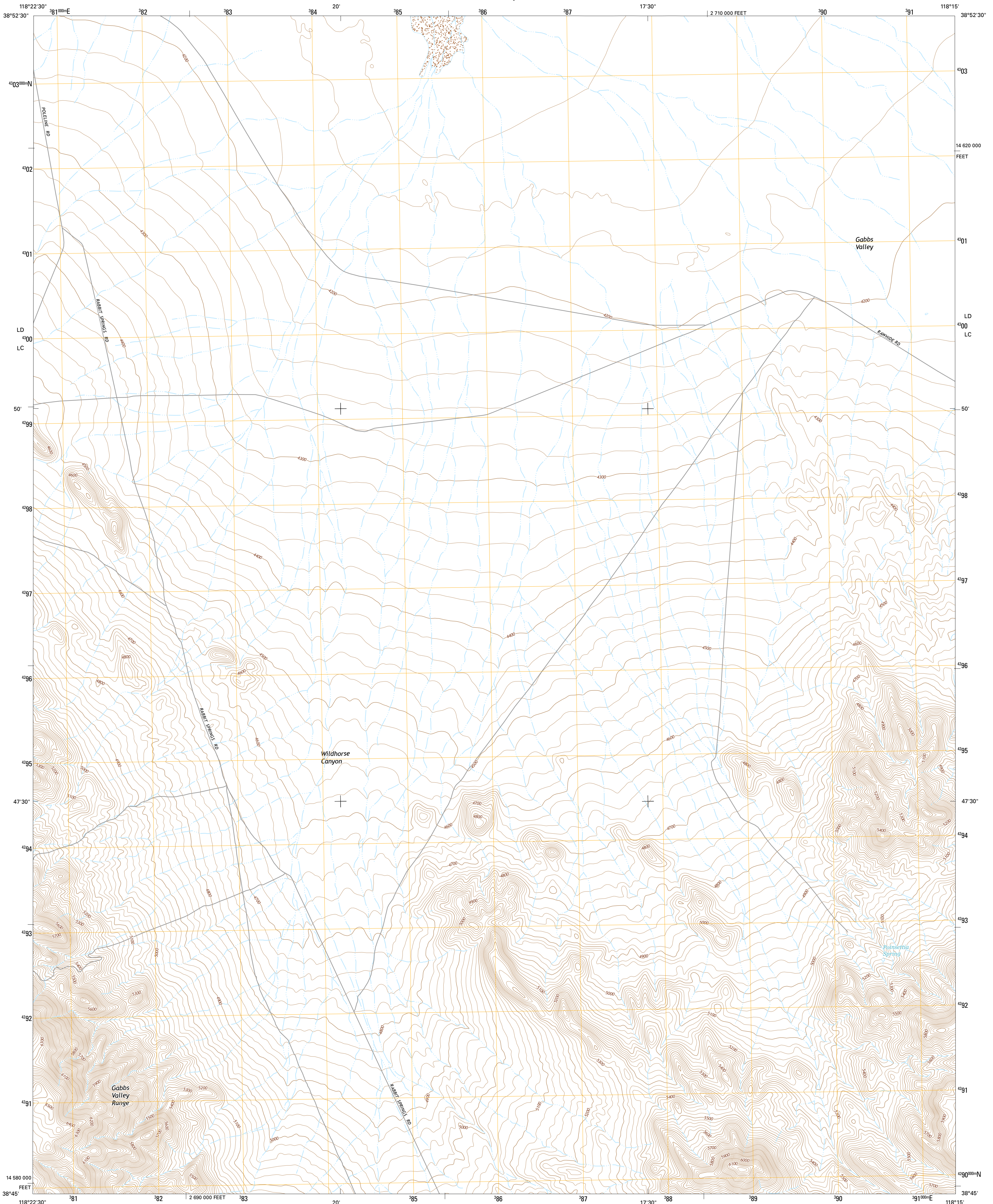




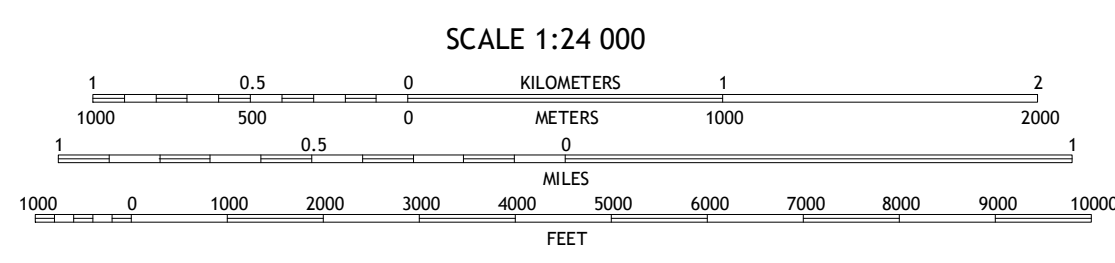
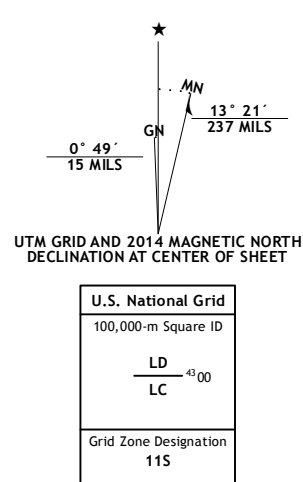
U.S. DEPARTMENT OF THE INTERIOR
U.S. GEOLOGICAL SURVEY



POINSETTIA SPRING QUADRANGLE
NEVADA-MINERAL CO.
7.5-MINUTE SERIES



Produced by the United States Geological Survey
 North American Datum of 1983 (NAD83)
 World Geodetic System of 1984 (WGS84). Projection and
 1 000-meter grid: Universal Transverse Mercator, Zone 11S
 10 000-foot ticks: Nevada Coordinate System of 1983 (west
 foot)
 This map is not a legal document. Boundaries may be
 generalized for this map scale. Private lands within government
 reservations may not be shown. Obtain permission before
 entering private lands.
 Imagery.....NAIP, July 2013
 Roads.....HERE, ©2013
 Names.....GNIS, 2013
 Hydrography.....National Hydrography Dataset, 2013
 Contour.....National Elevation Dataset, 2003
 Boundaries.....Multiple sources; see metadata file 1972 - 2014
 Public Land Survey System.....BLM, 2011



ROAD CLASSIFICATION

| | |
|------------------|-----------------|
| Expressway | Local Connector |
| Secondary Hwy | Local Road |
| Ramp | 4WD |
| Interstate Route | US Route |
| | State Route |

ADJOINING QUADRANGLES

| | | |
|---|---|---|
| 1 | 2 | 3 |
| 4 | 5 | 6 |
| 7 | 8 | |

1 Pilot Cone
 2 Murphys Well
 3 Mount Annie
 4 Copper Mountain
 5 Ramsey Spring
 6 Kinkaid NW
 7 Win Wan Flat
 8 Mount Ferguson

POINSETTIA SPRING, NV
2014