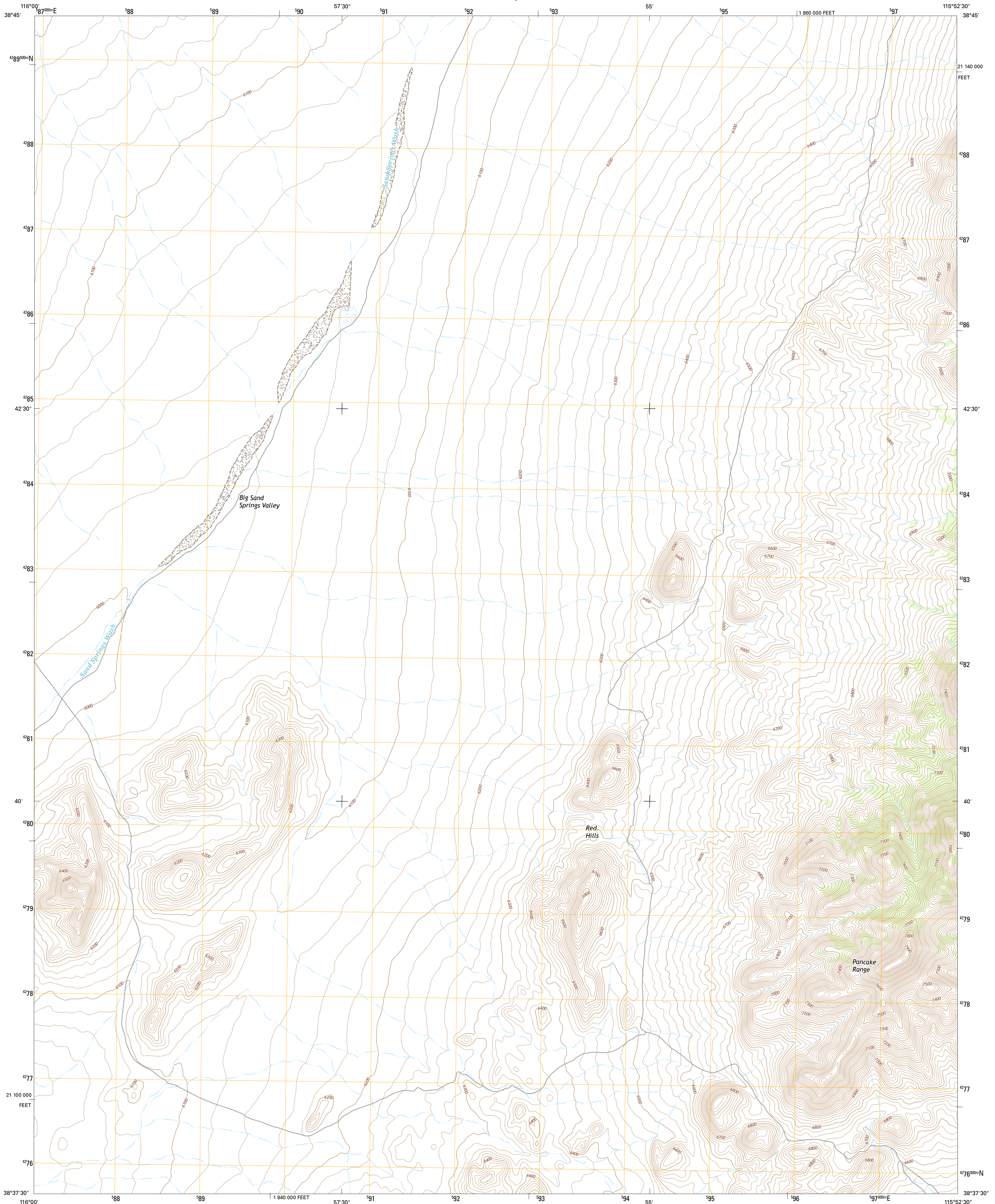




U.S. DEPARTMENT OF THE INTERIOR  
U.S. GEOLOGICAL SURVEY



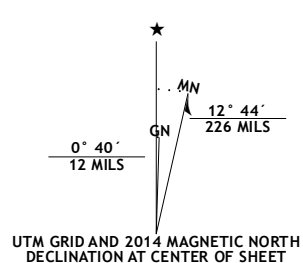
PORTUGUESE MOUNTAIN NW QUADRANGLE  
NEVADA-NYE CO.  
7.5-MINUTE SERIES



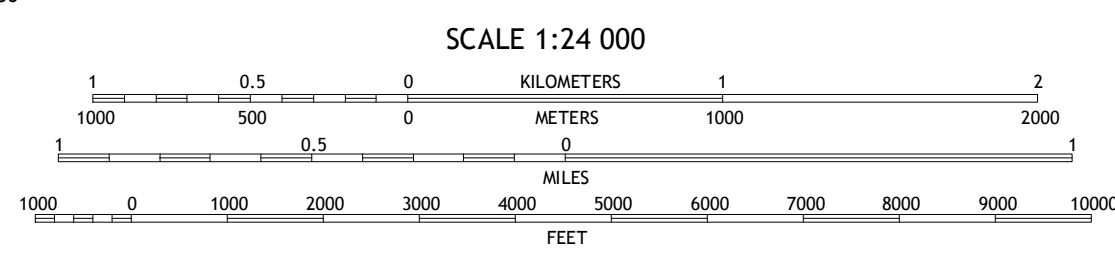
Produced by the United States Geological Survey  
North American Datum of 1983 (NAD83)  
World Geodetic System of 1984 (WGS84). Projection and  
1 000-meter grid: Universal Transverse Mercator, Zone 11S  
10 000-foot ticks: Nevada Coordinate System of 1983 (central  
zone)

This map is not a legal document. Boundaries may be  
generalized for this map scale. Private lands within government  
reservations may not be shown. Obtain permission before  
entering private lands.

Imagery.....NAIP, August 2013  
Roads.....HERE, ©2013  
Names.....GNIS, 2013  
Hydrography.....National Hydrography Dataset, 2013  
Contours.....National Elevation Dataset, 2001  
Boundaries.....Multiple sources; see metadata file 1972 - 2014  
Public Land Survey System.....BLM, 2011



U.S. National Grid
100,000-m Square ID
NC
Grid Zone Designation
11S



ROAD CLASSIFICATION

Expressway	Local Connector
Secondary Hwy	Local Road
Ramp	4WD
Interstate Route	US Route
	Slate Route

ADJOINING QUADRANGLES

1	2	3
4	5	6
7	8	

1 Red Ring Mountain  
2 Brown Summit SW  
3 Sand Spring  
4 Chaos Creek  
5 Portuguese Mountain  
6 Moores Station SE  
7 Black Rock Summit  
8 Lockes

PORTUGUESE MOUNTAIN NW, NV  
2014