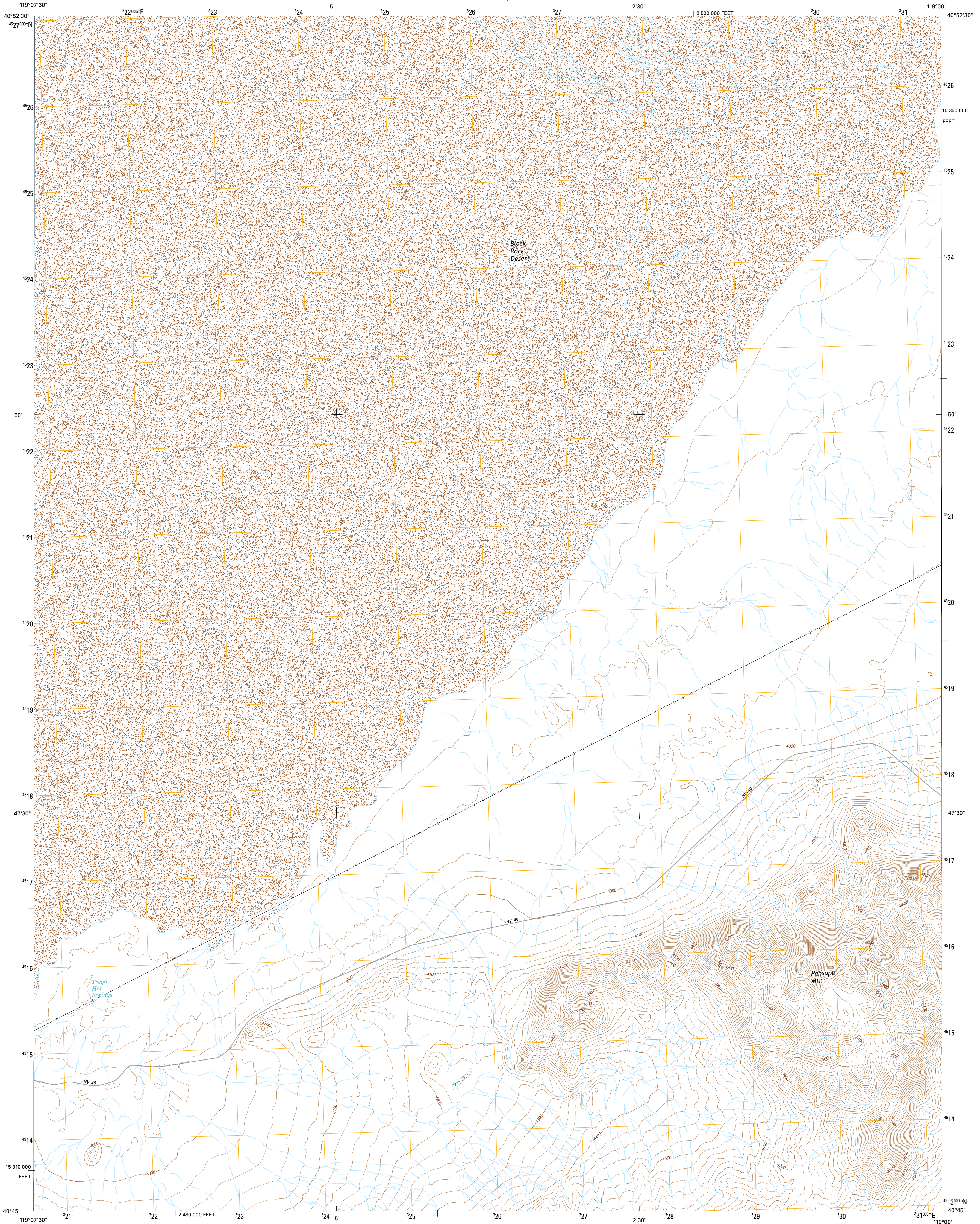




U.S. DEPARTMENT OF THE INTERIOR
U.S. GEOLOGICAL SURVEY



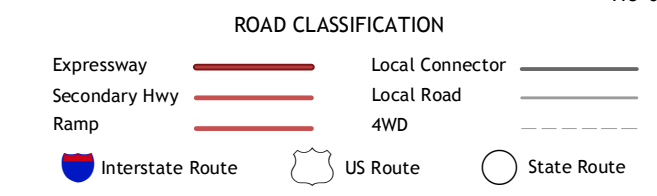
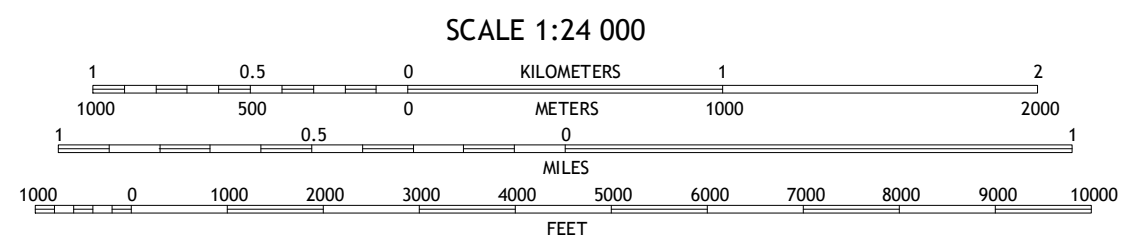
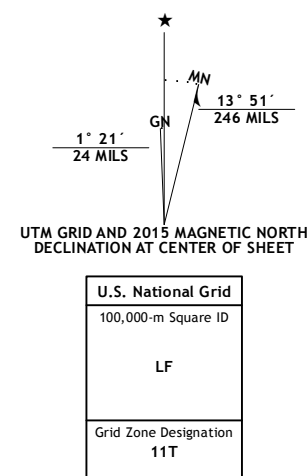
TREGO HOT SPRINGS QUADRANGLE
NEVADA-PERSHING CO.
7.5-MINUTE SERIES



Produced by the United States Geological Survey
North American Datum of 1983 (NAD83)
World Geodetic System of 1984 (WGS84), Projection and
1 000-meter grid: Universal Transverse Mercator, Zone 11T
10 000-foot ticks: Nevada Coordinate System of 1983 (west zone)

This map is not a legal document. Boundaries may be generalized for this map scale. Private lands within government reservations may not be shown. Obtain permission before entering private lands.

Imagery.....NAIP, July 2013
Roads.....HERE, ©2013
Names.....GNIS, 2013
Hydrography.....National Hydrography Dataset, 2013
Contours.....National Elevation Dataset, 2001
Boundaries.....Multiple sources; see metadata file 1972-2014
Public Land Survey System.....BLM, 2011



1	2	3
4	5	6
7	8	

ADJOINING QUADRANGLES

1 Mormon Dan Peak
2 Black Rock Point West
3 Black Rock Point East
4 Trego
5 Cholina
6 Dry Mountain NW
7 Dry Mountain
8 Sheep Spring

TREGO HOT SPRINGS, NV
2015