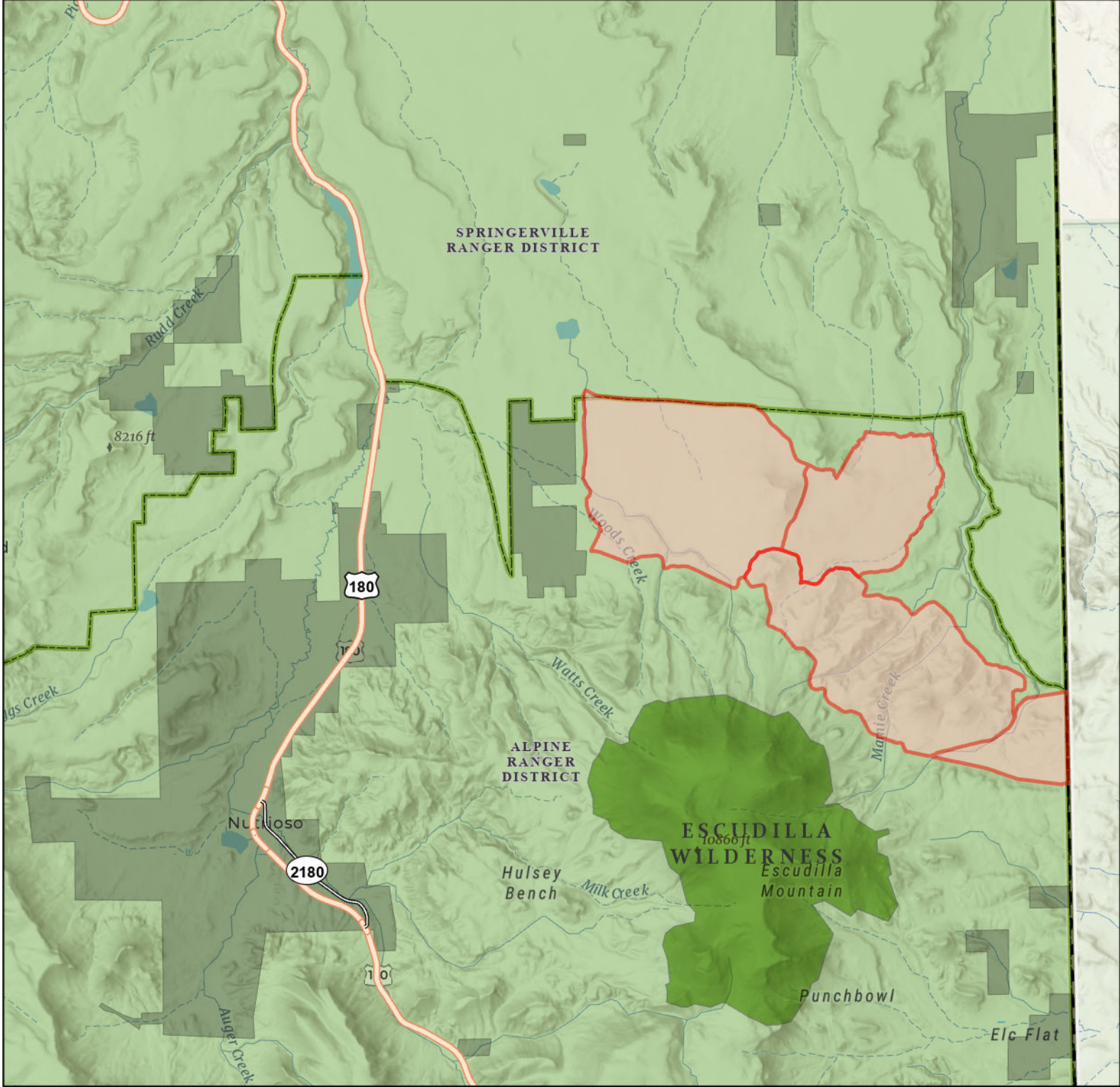




# Loco Knoll Proposed Prescribed Burn



This product is reproduced from geospatial information prepared by the USDA Forest Service. Geospatial information and GIS product accuracy may vary. Using GIS products for purposes other than those for which they were created may yield inaccurate or misleading results. USDA Forest Service reserves the right to correct, update, modify or replace GIS products without notification.

USDA is an equal opportunity provider, employer and lender.



-  Loco Knoll Prescribed Burn
-  Private Land
-  Apache-Sitgreaves NFs
-  Wilderness Primitive Areas
-  Ranger District Boundary

