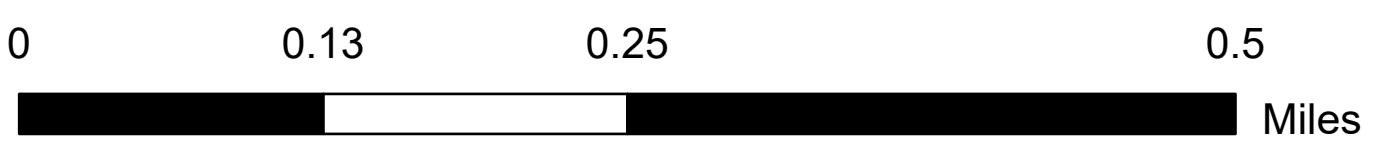


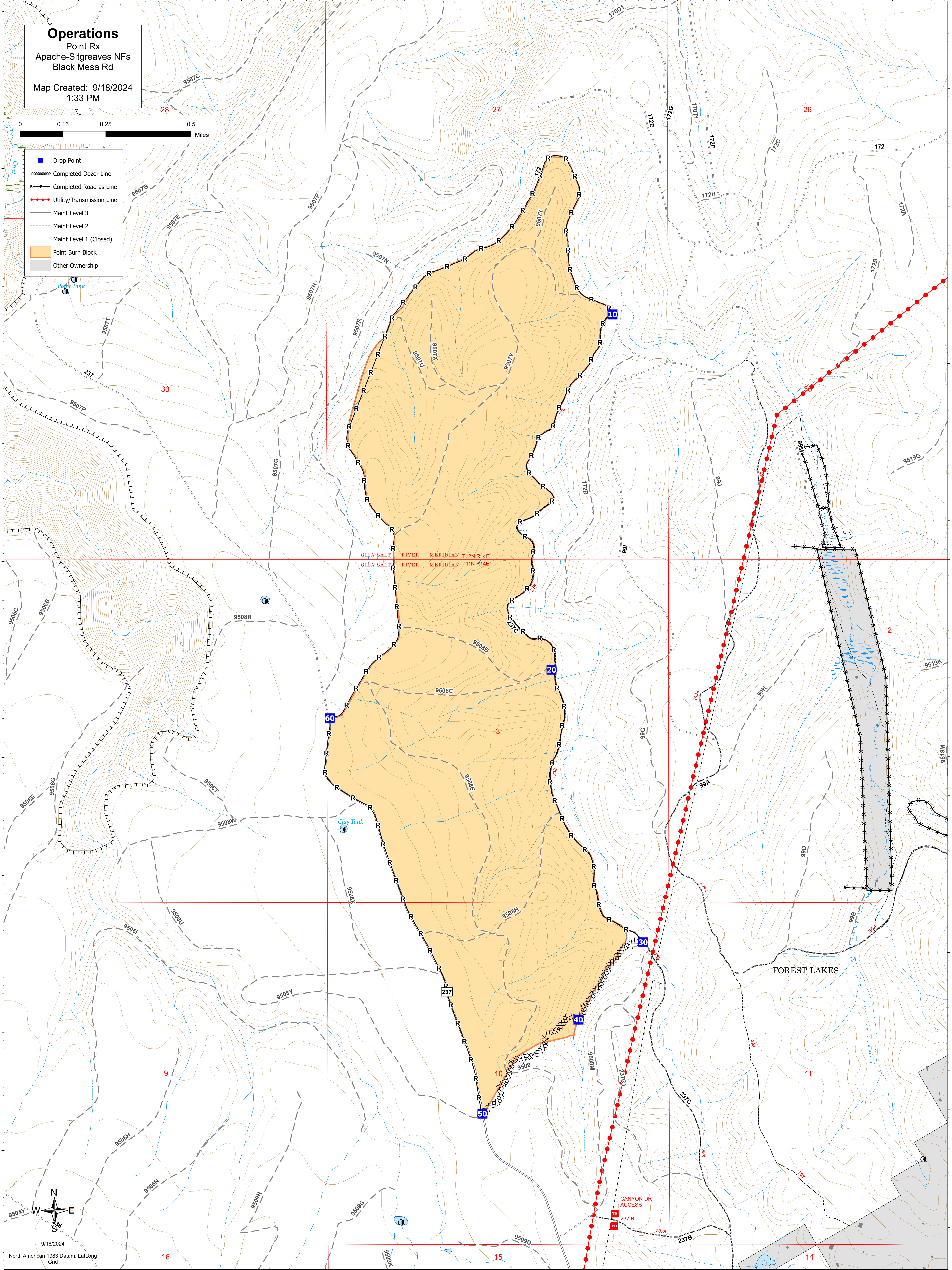
# Operations

Point Rx  
Apache-Sitgreaves NFs  
Black Mesa Rd

Map Created: 9/18/2024  
1:33 PM



- Drop Point
- Completed Dozer Line
- Completed Road as Line
- Utility/Transmission Line
- Maint Level 3
- Maint Level 2
- Maint Level 1 (Closed)
- Point Burn Block
- Other Ownership



GILA-SALT RIVER MERIDIAN T12N R14E  
GILA-SALT RIVER MERIDIAN T11N R14E

FOREST LAKES

CANYON DR ACCESS



9/18/2024  
North American 1983 Datum, Lat/Long Grid