

**COCONINO NF (AZ-COF)  
FLAGSTAFF DISPATCH (FDC)**



**2020 RESOURCE BRIEFING GUIDE**



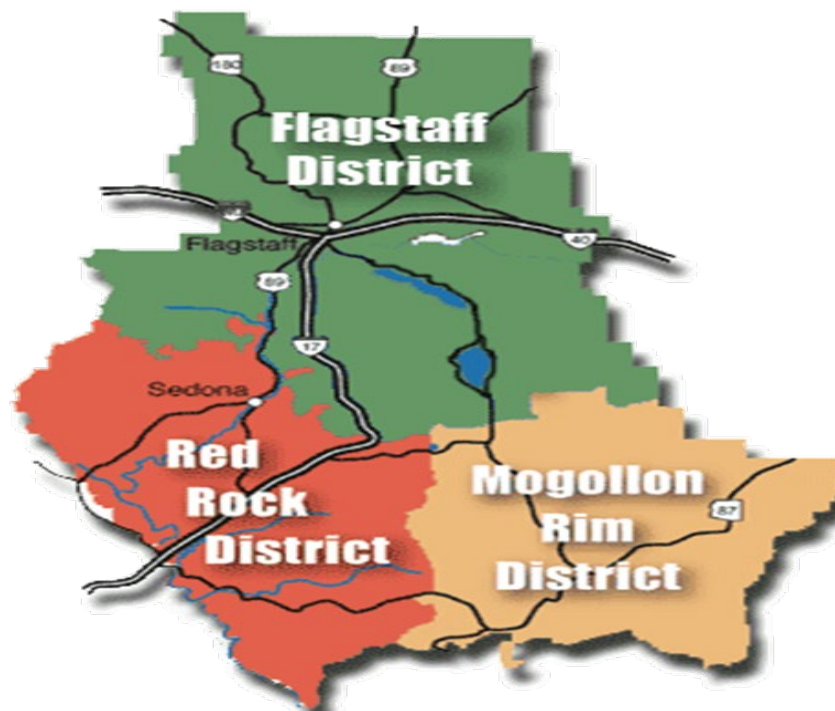
**!!PLEASE RETURN TO FDC!!**

THIS PAGE INTENTIONALLY LEFT BLANK

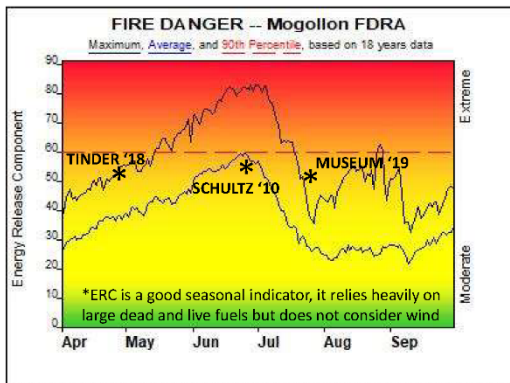
The Coconino National Forest is comprised of roughly 1.8million acres and is divided into three ranger districts. It is one of the most diverse national forests in the country with landscapes ranging from the famous Red Rocks of Sedona to ponderosa pine forests, to alpine tundra. The Coconino National Forest experiences anywhere from 250-400 plus fires a year. Many are human caused but the majority occurs during the Monsoon season due to lightning in late July through early September. Some are very small and some have the potential to grow very large like the Schultz Fire of 2010.

The Flagstaff District contains the North and Central parts of the forest and is a predominately ponderosa pine and pinon juniper forest with grass and oak understories. Elevations here can range from 5,000 to 12,000+ ft. This district includes Mt. Humphreys, the highest peak in Arizona located in the scenic Kachina Wilderness.

The Mogollon Rim District (pronounced mug-ee-yun) is the Southeast part of the forest. This rim is the most southern limit of the Colorado Plateau. On top of the Mogollon Rim elevations can easily reach 9-10,000 feet and vegetation is predominately ponderosa pine forests with oak and brush understories. This district includes everything on top of the rim and transitions to the Apache-Sitgreaves National Forest to the east and the Tonto National Forest “off” the rim to the south.



The Red Rock District is the Southwest portion of the forest. This district has ponderosa pine, juniper, brush, desert scrub, and seasonal grasses. The southern portion of the district is in the Verde Valley where temperatures can easily rise to 100 degrees and above in the summer. Most notable are the Red Rock formations and steep, inaccessible canyons surrounding the town of Sedona as well as many wilderness areas that attract sight seers on foot, in vehicle, and in the air.



#### Fire Danger Area:

- ◆ Mogollon FDRA
- ◆ 115 and 116
- ◆ Flagstaff/Greenbase RAWS
- \* Meets NWCG Wx Station Standards



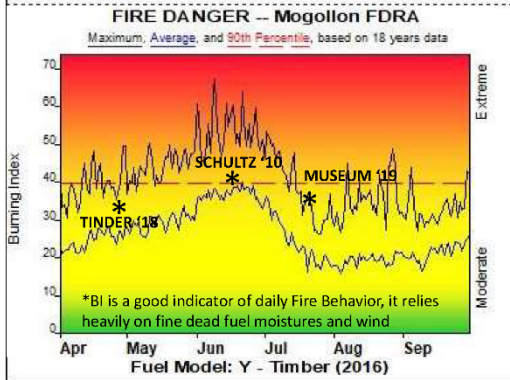
2020  
Fire Season

#### Fire Danger Interpretation:

- EXTREME** -- Use extreme caution
- High** -- Watch for change
- Moderate** -- Lower Potential, but always be aware

Maximum -- Highest Energy Release Component by day for 2002 - 2019  
 Average -- shows peak fire season over 18 years (3259 observations)  
 90th Percentile -- 10% of the 3259 days from 2002 - 2019 had an Energy Release Component above 60

**Local Thresholds - Watch out:** Combinations of any of these factors can greatly increase fire behavior:  
 20' Wind Speed over 15 mph, RH less than 15%,  
 Temperature over 75, 1000-Hour Fuel Moisture less than 12



#### Remember what Fire Danger tells you:

- ✓ Energy Release Component gives seasonal trends calculated from 2 pm temperature, humidity, daily temperature & rh ranges, and precip duration.
- ✓ Wind is NOT part of ERC calculation.
- ✓ Watch local conditions and variations across the landscape -- Fuel, Weather, Topography.
- ✓ Listen to weather forecasts -- especially WIND.



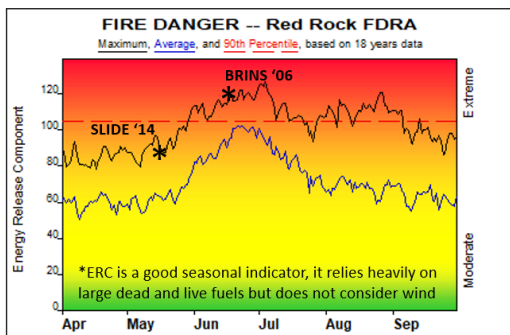
#### Past Experience:

Large fire days have occurred under the following:  
 NFDRS Indicators  
**ERC>47, BI>33, IC>40, SC>4, 1000H<12**

Environmental Indicators  
**Max Temp>75, Min RH<15, 20 Ft Wind Gusts>15, VPD>2800**  
 These conditions represents some of the minimums experienced on significant fire days of the past. As a general rule wind and fuel loads play important factors. Always consider fuel accumulations, topography, and wind.

Responsible Agency: USFS  
 FF+5.0 build 20191211 05/19/2020-15:55

Design by NWCG Fire Danger Working Team



#### Fire Danger Area:

- ◆ Red Rock FDRA
- ◆ Wx Zone 137 & 138
- ◆ Oak Creek & Verde RAWS
- \* Meets NWCG Wx Station Standards



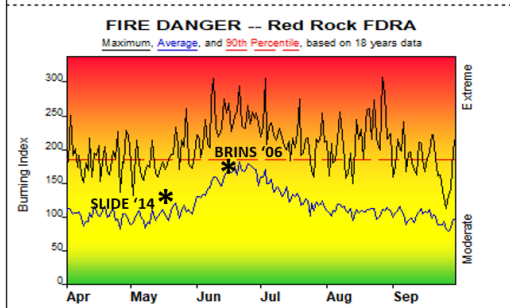
2020 Fire Season

#### Fire Danger Interpretation:

- EXTREME** -- Use extreme caution
- High** -- Watch for change
- Moderate** -- Lower Potential, but always be aware

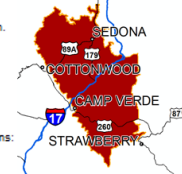
Maximum -- Highest Energy Release Component by day for 2002 - 2019  
 Average -- shows peak fire season over 18 years (3217 observations)  
 90th Percentile -- 10% of the 3217 days from 2002 - 2019 had an Energy Release Component above 104

**Local Thresholds - Watch out:** Combinations of any of these factors can greatly increase fire behavior:  
 20' Wind Speed over 7 mph, RH less than 15%,  
 Temperature over 85, Min Temperature over 50



#### Remember what Fire Danger tells you:

- ✓ Energy Release Component gives seasonal trends calculated from 2 pm temperature, humidity, daily temperature & rh ranges, and precip duration.
- ✓ Wind is NOT part of ERC calculation.
- ✓ Watch local conditions and variations across the landscape -- Fuel, Weather, Topography.
- ✓ Listen to weather forecasts -- especially WIND.



#### Past Experience:

Large Fires have occur under the following combinations:  
 NFDRS Indicators:  
**ERC>84, BI>136, 1000H<7**  
 Environmental Indicators:  
**Max Temp>85, Min RH<8, 20' Winds>6, Live FM<75**  
 While these conditions represents the largest fires, significant fires may still occur below these thresholds. Always Consider fuel accumulations, topography, and wind.

Responsible Agency: USFS  
 FF+5.0 build 20191211 05/15/2020-14:13 (C:\Users\shenning02\Documents\F...Coconino\_FDOF)

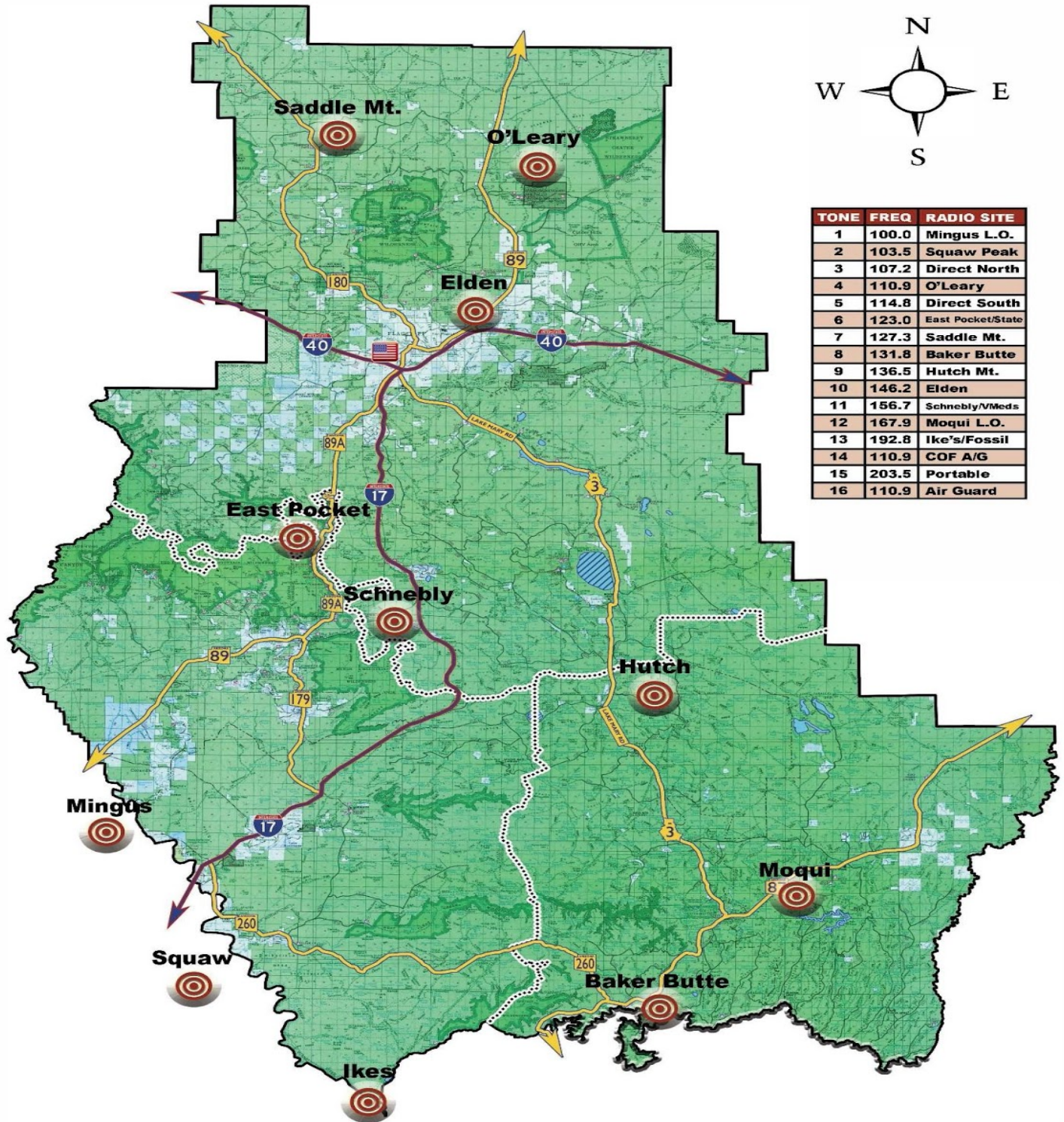
Design by NWCG Fire Danger Working Team

West Flagstaff	Area Code 928-		East Flagstaff	Area Code 928-	
<b>LODGING</b>			<b>LODGING</b>		
DRURY Inn	773-4900	300 S. Milton Rd.	Best Western	526-2388	3030 E.Route 66
Courtyard Flagstaff	774-5800	2650 S.BeulahBv	Days Inn	527-1477	3601 E.LockettRd.
Budget Inn Flagstaff	774-5038	913 S. Milton Rd.	Hampton- E Flg	526-1885	3501 E.LockettRd.
Comfort Inn	774-2225	2355 S.BeulahBv	Holiday Inn Xprs	714-1000	2320 E.Lucky Lane
Days Inn Route 66	774-5221	1000 W. Rte. 66	Little America	779-7900	2515 E.But ler Ave.
Econo Lodge- Unvrsty	774-7326	914 S. Milton Rd	Residence Marrt	526-5555	3440 Crt ry Club Dr.
Embassy Stes. Flgstff	774-4333	706 S.MiltonRd.	Travelodge-Flgst	779-6944	2200 E.But ler Ave.
FairfieldInn-Marriott	773-1300	2005 S.MiltonRd.	Ecn.Lodge-Lucky	774-7701	2480 E.Lucky Lane
Highland Cntry Inn	774-5041	223 S. MiltonRd.	Quality Inn- Flgs	226-7111	2500 E. Lucky Lane
Hilton Garden Inn	226-8888	350 W. Forest Meadows St.	Rodeway Inn	774-1821	2285 But ler Ave
			Ramada- East	779-3614	2350 E.Lucky Lane
Quality Inn I-40/I-17	774-8771	2000 S. Milt onRd	<b>MEALS</b>		
Radisson Woodlands	773-8888	1175W.Route 66	Cracker Barrel	773-1524	2560 E.LuckyLane
Springhill Marriott	774-8042	2455 S.BeulahBv	Outback	774-7630	2600 E.Lucky Lane
Super 8 Motel	774-4581	602 W.Route 66	Denny's East	774-3413	2306 E.Lucky Lane
Motel 6	779-3757	2745 S. WoodlandsVllg.	Sizzlers - East	526-3391	3540 E.Route 66
			Fratelli's Pizza-E	714-9700	2120 N. 4th St.
Ramada W.GrandCyn.	773-1111	2755 S. WoodlandsVllg.	Salsa Brava	779-5293	2220 E.Route 66
			Tacos Los Altos	714-1012	3650 E.Route 66
Hampton Inn&Suites	526-1885	3501 E.LockettRd	The Pit a Jungle	774-0086	320 S.Regent St.
La Quinta	556-8666	2015 S. BeulahBv	Wildflower Brea	233-5010 -350 E.Piccadilly Dr.	
Travelodge-Flg/NAU	213-5800	990 W. Route 66	Brandy's	779-2187	1500 E.Cedar Ave
Sleep Inn	556-3000	S.WoodlandsVllg	Hog's	779-5852	2200 E.But ler Ave.
			Black Barts Steak	774-1912	760 E.Butler Ave.
<b>MEALS</b>					
Buffalo Wild Wings	774-3550	2700 S.WoodlandsVllg.	<b>TOWING</b>		
Tacos Los Altos	255-0369	2500 S. WoodlandsVllg.	AM/PM(Flagstaf	526-4357	24/7
Lumberyard Brewery	779-2739	5 S.SanFrancisco St.	KC's (Flagstaff)	774-8878	24/7
Olive Garden	779-3000	2550 S.BeulahBv	Grand Canyon	Williams 635-0381 24/7	
Red Lobster	556-9604	2500 S.BeulahBv	Katt's (Flagstaff)	714-9100	24/7
Freddy's Custard&Burger-	779-7100	2675 S.BeulahBv	Tazco (Sedona)	639-2100	24/7
Coco'sBakery/Restr.	774-8886	360 W.Forest Meadow	Rte. 66 Recovery	Flagstaff 774-9000 - 24/7	
Denny's - West	779-1371	2122 S.MiltonRd.	Long Valley Garage (Happy Jack)	477-2897	
Sizzler - West	779-3267	2105 S.MiltonRd.	<b>CAR RENTALS</b>		
IHOP	779-5888	2725 S.WoodlandsVllg.	Alamo - Pulliam	774-3322	0800-2245 hrs
Quiznos	213-5553	2080 S.MiltonRd.	Hertz - Pulliam	774-4452	0800-1800
Taverna Greek Restr.	213-9994	2420 S.WoodlandsVllg.	-Downtown	226-0120 M-F 8-18, Sa 9-13, no Su	
Fuji Sushi	774-2322	2500 S.WoodlandsVllg.	Enterprise- 66	526-1377 M-F 8-18, Sa 9-12, no Su	
Dominos Pizza	779-3686	1541 S.MiltonRd.	Avis - Pulliam	774-8421 M-F 7-18, Sa 8-17,Su 8-17	
Oreganos Italian	773-8600	605 W.RiordanRd	Budget-Pulliam	779-5235 M-F 7-18, Sa/Su 8-1715	
Frat ellis Pizza	774-9200	119 W.PhoenixAv			
Pizza Guy	556-0200	1417 S.PlazaWay			
Chipotle	774-4254	1111 S.PlazaWay			

**BLANK**

# FOREST REPEATER MAP

## Coconino National Forest Repeater Locations



## GENERAL GUIDELINES

- ❖ The FDC call sign is “**Flagstaff**”
- ❖ Compose your thoughts before transmitting & keep message short
- ❖ Be professional and use clear text (no 10 code)
- ❖ Don't use abusive language or swear on the radio
- ❖ Use call signs if assigned (see Radio Call List)
- ❖ To place a call: call the person you are calling followed by who is calling
  - “**Jones – Walther or Captain 4-61 - Flagstaff**”
- ❖ To answer a call: identify yourself followed by who called you
  - “**Walther – Jones or Flagstaff – Captain 4-61**”
- ❖ Personnel without call sign's should be identified by last name
- ❖ If more than one person in zone with same last name, use first & last name
- ❖ **IF YOU GO IN SERVICE, FDC WILL TRACK YOU UNTIL YOU GO OUT OF SERVICE**
- ❖ **ALWAYS USE A REPEATER CHANNEL AND IDENTIFY WHAT REPEATER YOU ARE USING**

## RADIO OPERATING PROCEDURES

The primary purpose of having radio operating procedures is to reduce frequency congestion, and provide a rapid means of positive communication – Numerous radios are on the same net therefore strict net discipline and procedures are necessary to facilitate emergency traffic

**The two most important parts of net discipline are:**

- **Short – Clear messages**
- **Radio Professionalism**

Messages should not exceed 30 seconds. If they do, break your transmission after 30 seconds with the word “**BREAK**” – Allowing for 5-10 seconds before resuming your transmission will allow any emergency traffic to access the net – Speak normally (do not yell) and hold the microphone about 1” to 1/2” from your mouth – Say numbers and letters slowly and clearly.

Professional and Courteous radio procedures are to be followed in all radio broadcasts. Short concise messages and “clear text” will be used when communicating on any assigned radio frequency – “**Flagstaff**” is the official radio designator for the Flagstaff Dispatch Center (FDC) and will be used exclusively to identify the center on all assigned radio frequencies – The FCC call sign of KOC437 must be broadcast at the start and close of business by FDC to identify the broadcast license – Ranger Districts and Work Centers should also broadcast their FCC designations periodically.



## GENERAL RADIO USE

**\*\*\*When operating radios throughout the Coconino National Forest always use a repeater channel and state which repeater you are using**

Ex: “Flagstaff Engine 481 on Saddle Mountain”  
or  
“Flagstaff 6-5-8 on Squaw”

**\*\*\*Wait for Flagstaff Dispatch to acknowledge the Resource before continuing with radio traffic...**

This allows the listener to reply immediately, without searching or possibly tying up another repeater – Familiarize yourself with repeater location (see repeater map) relative to unit calling location to determine which tower is likely to be receiving/transmitting the strongest signal – If you are unfamiliar with the general coverage of the repeaters on the Coconino National Forest you can try the following:

*Key up each individual repeater and see if the “Squelch/Tail” is short and quiet or long and loud – The shorter/quieter tail should be the most powerful repeater to use – Please remember that if you are going to use this method ensure that you are not going to interfere with other emergency traffic -*

Individuals using the radio, who do not have a call sign, should identify themselves by their last name – If there is more than one individual with the same last name on the unit, first and last name should be used:

*“Flagstaff, Smith” or “Flagstaff, John Smith”.*

Visiting resources are required to “check-in” with FDC to establish communications for incident response – These units will use the radio call sign assigned on the home unit – If there is known to be more than one unit with the same call sign on the Coconino National Forest, a unit identifier along with the radio call sign should be used:

*“Flagstaff, Tonto Patrol 8-4”  
“Flagstaff, Flathead Engine 6-4-2”*

The “4” precedes the call signs for all Coconino Forest **FIRE** resources

*“Engine 4- 81 - Engine Four Eight One”*

With interagency operations and multi-channel radio capabilities within the units, each person should become familiar with cooperating agency's radio systems

When transmitting through tone-activated repeaters, wait one or two seconds after pressing the transmission button before speaking – This allows time for the repeater transmitter to be turned on by a tone signal, and the scan feature on the radio to stop on that channel – If you don't wait, you won't be heard

Call the unit you wish to speak to then identify who is calling; i.e.

*“Flagstaff, E 4-74 on Hutch”*

**Be concise!** Listen before transmitting to avoid cutting in on another conversation – When calling in on routine traffic, give the complete transmission all at one time – For example:

*"Flagstaff, Engine 4-73 is back at station"*

FDC can then acknowledge with the time and call sign

*“Engine 4-73, Flagstaff copies back at station at 1658”*

Remember to be CLEAR, CONCISE, COMPLETE, AND PROFESSIONAL when using the radio

Don't play with the radio by keying the transmitter, or playing music over the air

Units working on a fire are to use Tactical (TAC) frequencies

Flight Following and Air Guard are monitored in dispatch. These frequencies are used for aircraft Flight Following, and emergency aircraft contact only

Air to Ground is assigned to the Coconino NF and is to be used by ground units when communicating with aircraft

If you have any radio question please contact

**Flagstaff Dispatch 928-527-3552**

## IN SERVICE

Resource **“In-Service”** will be conducted on a daily basis – This will allow for each resource to make a verbal connection with FDC – This information (for fire resources) will be relayed in the morning staffing read after the morning weather – The Duty Officer will also call in district resource staffing prior to 0900

*“Flagstaff Engine 4-82” – “E 4-82, Flagstaff:” – “E 4-82 in svc with 5”*

*“E 4-82, Flagstaff copies in service with 5 at 1001”*

If Flagstaff does not respond, continue to attempt contact until positive contact can be established – *A minimum of 15-20 seconds should be allowed for FDC to respond as there may be radio traffic that cannot be heard by field units and may have covered your transmission*

Units returning to station will do as follows:

*“Flagstaff, Engine 4-73 returning to station”*

Once a unit has arrived at station they need to call dispatch to identify that they are back at station

*“Flagstaff, Engine 4-73 back at station”*

**Units going in service over the radio will be tracked from the time of in-service to the time they call out of service**

## LOOKOUTS – IN-SERVICE

Lookouts going in service should do so with;

- Wind Direction
- Wind Speed
- 24hr Precipitation

*“Flagstaff, Elden is in service, winds are North at 15 mph with gusts to 25, .75 inches of precip”*

It is not necessary for Lookouts to provide temperature, visibility, etc. when going in service with Flagstaff

When lookouts are **“off-duty”**, there is no need for them to go in and out of service every time they leave the tower

## **FIRE WEATHER/STAFFING**

Starting in the spring, FDC will begin to read the morning weather and daily staffing levels for the Forest. Afternoon weather will also be read once the National Weather Service makes it available (usually in late April/May). When this information is read it is imperative that all radio traffic that is non-emergency traffic must cease. An announcement will be made before each weather reading. The schedule will be as follows:

Morning WX – Daily Staffing – Approx. 0900 every morning

***“All Stations Flagstaff, standby for you morning fire weather forecast and daily staffing”***

Afternoon Weather – Approx. 1500 (depending on the updated info from the NWS)

***“All stations Flagstaff, standby for your afternoon fire weather forecast and daily indices”***

## **INITIAL ATTACK DISPATCH**

Emergency dispatch procedures will take precedence over all other routine radio traffic.

Transmit the following information listed below:

1. Resources
2. Incident #
3. Legal
4. General Location
5. Time

Example of an Initial Dispatch:

1. Receive Report of emergency, open Incident in WILDCAD and record accordingly
2. Determine location and jurisdiction
3. Transmit the following information on Forest Fire frequencies:

***“Engine 4- 81, Engine 4-84, D-5 Fuels, WT4-8-1 Flagstaff respond to Incident #1 at T19, R10, S22 (SW/SW) near Mormon Mtn, at 1009”***

4. All units will check back with dispatch and if not, dispatch will continue to call the unit until contact has been made

***“Flagstaff, Engine 4-81 copies and en route/responding, etc...”***

5. Flagstaff will ensure all resource responding have checked back with dispatch and have all available/required information

## ON-SCENE

Units arriving on-scene of an incident being managed by Flagstaff Dispatch will transmit the following information

- **Unit on-scene identification (resource name / incident #)**
- **Size Up**
  - **IC**
  - **Fire Name**
  - **Size**
  - **Fire Behavior/ROS/Fuels**
- **Resource Needs**
- **Best Access – ex...flagged in pink, junction of Forest roads xxx and yyy...**
- **Communications**
- **Latitude/Longitude**

*“Flagstaff E 4-84 North Repeat on East Pocket” – “E 4-84 Flagstaff” – “E 4-84 is on-scene Incident #4 / IC will be Kolb and we will call this the Mooney fire - we have approx. 2/10<sup>ths</sup> of an acre with a Moderate ROS, burning in grass and timber, BREAK” – “Flagstaff I would like to request an additional T-3 Engine and a Water Tender / best access will be Forest Road (FR) 231 to FR535 and the fire will be flagged in orange / incoming resources can contact the IC on TAC 3, BREAK” – “Additionally I have a Lat/Long of 34 22 54.8 x 111 32 44.1”*

*“Copy E 4-84, on scene Incident #4 / Mooney is a good name, IC will be Kolb / operations will be on TAC 3 / you have approx. 2/10<sup>ths</sup> of an acre burning in grass and timber with a Moderate ROS, BREAK” – “Flagstaff copies your Lat/Long of 34 22 54.8 x 111 32 44.1 and best access is FR231 to FR535 / flagged in orange and you are requesting an additional T-3 Engine and Water Tender”*

**\*\*\*IC may request Containment/Confinement/Monitor at any point of the fire** – FDC will contact the Duty Officer and place the request with them – FDC will then advise the IC if request has been approved

*“Mooney IC Flagstaff” – “Flagstaff Mooney IC” – “Request for containment approved per Battalion 4-8-2”*

**\*\*\*Non-Fire resources – if you come across a fire please do not take action unless you are appropriately qualified – Please advise FDC as soon as possible – FDC will advise the appropriate Duty Officer and send fire resources to your location**

### Items to keep in mind:

- Law Enforcement needs other than Fire Investigator
- Keep the area clear of civilian traffic
- Advise FDC of best access (i.e. road numbers, general location, lat/long)
- General info about the situation (size and fire behavior)

**Ensure to request a Fire Investigator if the fire is believed to be human caused and protect the origin if possible**

## FINALS

Flagstaff Dispatch will be notified by IC with any “Final” information – That information will include the following

- **Contain/Control Time**
- **Size**
- **Cause – Human or Lightning**
- **Complexity**
- **Fuel Model**
- **Lat/Long of Origin**

*“Flagstaff Mooney IC” – “Mooney IC Flagstaff” – “Flagstaff, the Mooney fire was controlled at 18:45 at ½ acre / Human caused / Complexity 5 / Fuel Model (9 or Ponderosa Pine) all resources have been released and are returning station”*

## OUT OF SERVICE

**Flagstaff Dispatch will track each unit back to station and Out of Service**

Units that return from the field to station and are going out of service immediately shall state with 1 radio call i.e.

*“Flagstaff, Patrol 4-8-2 at station, out of service.”*

Out of service, prior to the end of the regular business day:

*“Flagstaff Patrol 4-8-2 is out of service”*

Units who go in service over the radio and fail to go back at station will receive a “**status check**” over the radio – If FDC is unable to reach any unit for status checking, a phone call will be made to the individual, duty officer or supervisor to ensure that they are back at station and out of service or not yet returned from the field

*“6-5-2-3 Flagstaff status check” – “Flagstaff 6-5-2-3, I am approximately 25 minutes out from station” – “Copy 6-5-2-3 25 minutes out from station 17:45”*

FDC will go “out-of-service” daily to inform the field of when the office is not staffed

*“All Stations Flagstaff is out of service at 1705, KOC437”*

**Units that intend to remain on duty beyond the normal business hours should notify FDC at the earliest knowledge of extended staffing - preferably by the Duty Officer or supervisor.**



## RADIO FREQUENCIES

<b>CHANNEL</b>	<b>RX FREQ</b>	<b>TX FREQ</b>	<b>REPEATER TX TONE</b>	<b>TYPE OF USE</b>
1	171.425	164.075	100.0	NORTH REPEAT
2	172.300	164.875	103.5	SOUTH REPEAT
3	170.550	172.250	107.2	KAIBAB FIRE
4	173.925	165.750	110.9	PRESCOTT FIRE
5	164.825	164.125	114.8	TONTO FIRE
6	166.950	166.350	123.0	FLAG NPS
7	151.400	159.4050	127.3	STATE
8	162.400	None	131.8	WX
9	167.550	167.550	136.5	TAC 1
10	168.675	168.675	146.2	TAC 2
11	168.775	168.775	156.7	TAC 3
12	154.280	154.280	167.9	MUTUAL AID
13	155.340	155.340	156.7	VMED (28)
14	166.9625	166.9625	110.9	COF A/G
15	168.350	168.350	203.5	TRAVEL
16	168.625	168.625	110.9	AIR GAURD

**\*\*\*The above group is Tone Selectable**

## TONES

<b>STONE</b>	<b>FREQUENCY</b>	<b>MOUNTAIN TOP</b>	<b>CHANNEL</b>
1	100.0	Mingus	South
2	103.5	Squaw Peak	South
3	107.2	North Direct	North
4	110.9	O'Leary	North
5	114.8	South Direct	South
6	123.0	East Pocket/State	North and South
7	127.3	Saddle Mtn	North
8	131.8	Baker Butte	South
9	136.5	Hutch Mtn	North and South
10	146.2	Elden	North
11	156.7	Schnebly/VMed	North and South
12	167.9	Moqui L.O.	South
13	192.8	Fossil	South
14	110.9	COF A/G	
15	203.5	Portable	
16	110.9	Air Guard	



<b><i>NORTH NON-FIRE GROUP (2) FLAGSTAFF RD</i></b>			
<b>CHANNEL</b>	<b>LABEL - NAME</b>	<b>RX FREQ</b>	<b>TX FREQ</b>
1	O'LEARY	171.425	164.075
2	EAST POCKET	171.425	164.075
3	SADDLE MTN	171.425	164.075
4	HUTCH MTN	171.425	164.075
5	ELDEN	171.425	164.075
6	SCHNEBLY	171.425	164.075
7	BAKER BUTTE	172.300	164.875
8	MOQUI L.O..	172.300	164.875
9	TAC 1	167.550	167.550
10	TAC 2	168.675	168.675
11	TAC 3	168.775	168.775
12	MUTUAL AID	154.280	154.280
13	VMED 28	155.340	155.340
14	COF A/G	166.9625	166.9625
15	TRAVEL	168.350	168.350
16	AIR GAURD	168.625	168.625

<b><i>SOUTH NON-FIRE GROUP (3) – RED ROCK/MOGOLLON RD</i></b>			
<b>CHANNEL</b>	<b>LABEL - NAME</b>	<b>RX FREQ</b>	<b>TX FREQ</b>
1	MINGUS	172.300	164.875
2	SQUAW PEAK	172.300	164.875
3	EAST POCKET	172.300	164.875
4	BAKER BUTTE	172.300	164.875
5	HUTCH	172.300	164.875
6	SCHNEBLY	172.300	164.875
7	MOQUI LO	172.300	164.875
8	FOSSIL	172.300	164.875
9	TAC 1	167.550	167.550
10	TAC 2	168.675	168.675
11	TAC 3	168.775	168.775
12	MUTUAL AID	154.280	154.280
13	VMED 28	155.340	155.340
14	COF A/G	166.9625	166.9625
15	TRAVEL	168.350	168.350
16	AIR GAURD	168.625	168.625

**\*\*\*Groups 2 and 3 above are NOT Tone Selectable**

## COCONINO NATIONAL FOREST – FIRE AND AVIATION MANAGEMENT STAFF

James Pettit – Fire Staff	Office: (928) 527-3550 Cell: (928) 607-1676
Vacant – Deputy Fire Staff/FAO	Office: (928) 527-3556 Cell:
Eric Graff – Forest Aviation Officer (Detailed)	Office: (928) 638-7413 Cell: (928) 856-0319
Vic Morfin – Fuels Specialist	Office: (928) 527-3557 Cell: (928) 606-4708
Sean Henning – Fire/Fuels Specialist	Office: (928) 527-3566
Jeff Walther – FDC Center Manager	Office: (928) 527-3554 Cell: (928) 864-6036
Tony Johnson – FDC Asst. Center Mgr	Office: (928) 527-3551 Cell: (520)260-6919
John Yurcik – Initial Attack Dispatcher	Office: (928) 527-3552
Tera Lowe – Initial Attack Dispatcher	Office: (928) 527-3552
Ana Campbell – Initial Attack Dispatcher	Office: (928) 527-3552
Margaret Knight – Support Dispatcher	Office: (928) 527-3552

### After Hours Radio Use

- FDC is staffed Mon-Fri, 0700-1730 (Dec-Mar)
- FDC is staffed Sun-Sat, 0630-1830 (Apr-Nov)
- As activity increases, FDC will be staffed as long as necessary as determined by the Center Manager or Coordinator on Duty - COD. The above weekdays and hours are approximate and will be determined by the current fire situation within zone, geographically and nationally.
- An “on-call” dispatcher is assigned daily to handle communications outside of normal hours.
- **If there is a communications need outside of normal hours (periods FDC is not staffed) call 928-527-3552 to reach the answering service who will contact the On-call dispatcher.**

# MILE MARKER INFORMATION

<b>Highway 180</b>	
Junction 180/Santa Fe	215.4
Flagstaff City Limits	216.9
Schultz Pass (FR 420)	218.6
Hidden Hollow Rd.	219.7
FR 164B	220
Fort Valley Ranch Rd.	221.6
Ski Lift Lodge/Snowbowl Rd.	223
Baderville	223.5
FR 245	230
FR 151 S. Entrance/ FR 222B	226
Flagstaff Nordic Center	232
FR 760	234
Kendrick Park	236.2
FR 191C	238
FR 191	242
Forest Boundary	247
FR 151 N. End	
<b>Highway 89 North</b>	
Continental Country Club Road	419
Camp Townsend/Old 66 East	420.8
Sandy Seep Trailhead	421
Silver Saddle/Koch Field Rd.	422.8
City Dump	423.7
FR 865	424
Campbell Rd.	425
Park Road	329
Fernwood Estates	426
FR 776	427
Lennox Park	428
Sunset Crater Monument Road/ FR 545	430
Summit Station	431.5
FR 9121C	432.5
FR 546	434.5
Sacred Mountain	436.3
Cedar Ridge	438
FR 9127	439
Deadman Flat	440
Hulls Wash	441
Forest Boundary	442.5
Wupatki National Monument/ FR 545	444.7

<b>Highway 89 South</b>	
89A/Northern Arizona University	420
I-17 on Ramp	401.9
University Heights/Lake Mary Road	401.4
Mountain Dell Rd.	401
Airport/Fort Tuthill/J.W. Powell	399
Old Munds Highway	398.1
Pine Dell	398
Forest Highlands Dr.	397.2
Lindberg Springs Rest Area	395.9
FR 533	395.5
FR 533B	394
Fry Canyon	392.5
FR 535	391
Oak Creek Vista	390
Pumphouse Wash	387.7
Slide Rock State Park	381.3
Indian Gardens	378.1
<b>Interstate 40 East</b>	
Butler Ave/40	196
4th Street Overpass	198.3
East Interchange/ Country Club Rd.	201.3
Walnut Canyon Interchange	204.6
Cosnino Road	207.1
Winona	211
Twin Arrows	219.5
Winslow	252
<b>Interstate 40 West</b>	
Garland Prairie Road	178
Rest Area	182
West Forest Boundary	183
Bellefont/ Beaton's Truck Stop	185
A-1 Mountain Road	190
West Interchange/ Rte.66 and I-40	191
Flagstaff Ranch Road	192
Woody Mountain Overpass	193.5
I-17 and I-40 Interchange	195
Rio De Flag Bridge	198







# Water Sources

## Hydrant and Use Protocol:

\*There are hydrants available for Forest Service use throughout some of the communities in and around the forest. However, the proper channels must be followed in order to accurately record the amount of water used as this cost may be applied to an incident financial code. *Please contact Flagstaff Dispatch* as soon as you know you will need to use a hydrant for refill so we can start communications with the appropriate individuals.

## Standpipes:

North to South	
Flagstaff Ranger Station (Peaks)	5075 N. Hwy. 89 Flagstaff, AZ
Flagstaff Ranger Station (Mormon Lake)	4373 S. Lake Mary RD. Flagstaff, AZ
Mormon Lake Guard Station	Mile Post 318 Lake Mary Rd.
ADOT yard/ Little Antelope Guard	I-17 Exit 320 S. of Flagstaff, AZ
Beaver Creek Work Center	I-17 Exit 298 East approx 3 miles
Red Rock Ranger Station	???? Hwy. 179 Sedona, AZ
Happy Jack Ranger Station	133 Fire Center Rd. Happy Jack, AZ
Blue Ridge Ranger Station	Mile Post 299.6 Hwy. 87 Blue Ridge,

## Drafting Sites:

Flagstaff Ranger District				
Draft Site	Legal	Latitude	Longitude	Status
Lake Mary	T20N R8E Sec 34	N 35 04' 36"	W 111 31' 46"	Wet
Ashurst Lake	T19N R9E Sec 23	N 35 01' 8.5"	W 111 24' 11.3"	Wet
Kinnickinnick	T18N R10E Sec 35	N 34 53' 52"	W 111 18' 20"	Wet
Red Rock Ranger District				
Fish Hatchery	T19N R6E Sec 15	N 35 01' 29"	W 111 44' 22"	Wet
Pine Flats Subdivision	T 19N R6E Sec 23	N 35 00' 30"	W 111 44' 13"	
Cave Springs Crossing	T19N R6E Sec 27	N 35 00' 00"	W 111 44' 22"	
Banjo Bill Day Camp	T18N R6E Sec 08	N 34 57' 39'	W 111 45' 13"	
Junipine Estates Crossing	T18N R6E Sec 05	N 34 57' 26"	W 111 45' 13"	
Shangri-la	T18N R6E Sec 21	N 34 55' 44"	W 111 44' 22"	
Mogollon Rim Ranger District				
Blue Ridge Reservoir	T14N R11E Sec 33	N 34 33' 17.3"	W 111 11' 39.5"	
Knoll Lake	T12N R12E Sec 16	N 34 25' 53"	W 111 05' 06.8"	
C.C. Cragin Reservoir Tank	T13N R10E Sec 36	N 34 28' 52.7"	W 111 14' 27.8"	
Potato Lake	T12N R09E Sec 01	N 34 27' 48.0"	W 111 20' 45.5"	
Mule Park	T16N R9E Sec 20	N 34 45' 32.1"	W 111 25' 45.1"	
Perryman Lake	T14N R10E Sec 07	N 34 36' 40.5"	W 111 20' 02.2"	



# Helicopter Operations

## Helibases:

North to South:

Flagstaff Hotshot Ranch – N 35 17' 15.28" x W 111 43' 27.22"

Mormon Lake Guard Station – N 34 54' 28.28" x W 111 26' 17.92"

Oak Creek Vista Helibase – N 35 01 57.75 x W 111 44 10.70

Beaver Creek Work Center – N 34 40' 21.62" x W 111 42' 43.74"

## Helispots: (North to South)

Name	Location	Dir.	Lat/Long	Legal	Work Required
Kendrick Park Strip	Kendrick Park	2-Way	N 35 24' 8.91" W 111 45' 7.73"	T23N R6E 3 NESW	assess before use
Sunset Crater	Sunset Crater	2-way	N 35 22' 06.10" W 111 28' 26.34"	T23N R9E 19 NE	assess before use
Schultz Tank	S. of FR 420	2-way	N 35 17' 07.00" W 111 37' 31.60	T22N R7E 13	assess before use
Flagstaff IHC Ranch	N. Hwy 180	2-way	N 35 17' 08.66" W 111 43' 25.46"	T22N R6E 14 NWSE	none
Flag- Pulliam Airport	SE of Flagstaff	2-way	N 35 08' 17.75" W 111 40' 15.99"	T20N R7E 5 SE	none
Mormon Lake Guard	Mormon Lake	2-way	N 34 54' 30.08" W 111 26' 17.02"	T18N 9E 28 NESW	none
Harding Point	Harding Point Parking Lot	2-way	N 35 00' 46.33" W 111 45' 05.73"	T19N 6E 22NESW	none
E. Buzzard Ridge	End of FR 792	1-way	N 35 00' 56.03" W 111 47' 27.25"	T19N R6E 20 NWSW	needs full day work.
Turkey Butte	On the road below the tower to the right.	1-way	N 35 01' 59.0" W 111 54' 08.5"	T19N R5E 18 NWNE	none
Lost lake	Between 2 tanks at Lost Lake	2-way	N 35 01' 05.4" W 111 53' 03.4"	T19N R5E 20 NWNE	none
9017 Road	End of FR9017 in West Fork	1-way	N 35 01' 18.5" W 111 50' 29.3"	T19N R5E 14 SWSW	none

## Helispots (Cont'd):

Name	Location	Dir.	Lat./Long	Legal	Work Required
792 road	Junction of FR 792 and FR 9014H	2-way	N 34 59' 54.9" W 111 49' 23.8"	T19N R5E 25 SWNW	none
Rattlesnake Mesa	End of FR 539A	2-way	N 34 58' 54.5" W 111 51' 51.4"	T19N R5E 33 NESE	none
W. Dave Joy Point	West end of point on FR	1-way	N 34 58' 52.3" W 111 53' 08.5"	T19 R5E 32 NWSE	none
Secret Trailhead	Trailhead parking lot	2-way	N 34 01' 48.82" W 111 54' 03.03"	T19N R5E 31 cntr	place marker
Little Round/Bear Sign Canyon	End of FR539	2-way	N 34 58'30.44" W 111 49' 42.52"	T18N R5E 31 NWNW	none
Little Round Mtn Tra	SE Little Rnd Mtn.	2-way	N 34 57' 49.7" W 111 49' 59.8"	T18N R5E 4 NWSE	1/2 day work
East Pocket	South of E.P. Lookout	1-way	N 34 57' 43.15" W 111 46' 32.9"	T18N 6E 5 SE	1/2 day work

## Dipsites:

Dipsite Name (N to S)	Legal	Latitude	Longitude	Wet/Dry
<b>Flagstaff Ranger District North Half</b>				
Flagstaff Hotshot Ranch	T22N R6E Sec 14	N 35 17' 12"	W 111 43' 21"	Pumpkins
Schultz Tank	T22N R7E Sec 14	N 35 17' 06"	W 111 37' 33"	Seasonal
Flagstaff Reservoirs	T22N R7E Sec 33	N 35 14' 19"	W 111 39' 45"	Seasonal
Country Club Reservoir	T21N R12E Sec 22	N 35 12' 04"	W 111 34' 38"	Wet
Walnut Lake	T21N R8E Sec 17	N 35 12' 07"	W 111 34' 10"	Wet
Lake Elaine	T21N R8E Sec 19	N 35 11' 11"	W 111 35' 20"	Wet
<b>Flagstaff Ranger District South Half</b>				
Marshall Lake	T20N R8E Sec 15	N 35 07' 08"	W 111 32' 03"	Seasonal
Kachina Village Wetlands	T20N R7E Sec 18	N 35 06' 42"	W 111 41' 21"	Wet
Lake Mary	T20N R8E Sec 34	N 35' 04' 36"	W 111 31' 46"	Wet
Ashurst Lake	T19N R9E Sec 23	N 35 01' 8.5"	W 111 24' 11.3"	Wet
Mormon Lake	T18N R9E Sec 17	N 34 56' 57"	W 111 27' 18"	Seasonal
O'Dell Lake	T18N R7E Sec 23	N 34 56' 02"	W 111 37' 47"	Wet
Kinnickinnick Lake	T18N R10E Sec 35	N 34 53' 52"	W 111 18' 20"	Wet

## Dipsites (Cont'd):

Dipsite Name (N to S)	Legal	Latitude	Longitude	Wet/Dry
<b>Red Rock Ranger District</b>				
Oak Creek Vista	T19N R6E Sec 11	N 35 01' 59"	W 111 44' 11"	Seasonal
Upper Slide Rock	T18N R6E Sec 17	N 34 57' 02"	W 111 45' 18"	Wet
Slide Rock State Park	T18N R6E Sec 17	N 34 56' 18"	W 111 45' 16"	Pumpkins
Seven Canyons	T18N R5E Sec 27	N 34 55' 06"	W 111 48' 54"	Pumpkins
Black Tank	T18N R4E Sec 24	N 34 54' 29"	W 111 57' 48"	Dry
Grasshopper Point	T17N R6E Sec 4	N 34 53' 02"	W 111 43' 54"	Wet
Midgley Bridge	T17N R6E Sec 5	N 34 53' 02"	W 111 44' 38"	Wet
Sedona Waste H2O Plnt	T17N R4E Sec 25	N 34 49' 38"	W 111 53' 56"	Wet
Woodchute Stock Tank	T16N R2E Sec 30	N 34 44' 20"	W 112 10' 06"	Wet
Cottonwood Waste H2O Plnt	T15N R3E Sec 4	N 34 43' 56"	W 112 02' 28'	Wet
Beaver Creek Dipsite	T15N R6E Sec22	N 34 40' 24"	W 111 42' 41"	Pumpkins
Mingus Springs	T15N R2E Sec 28	N 34 38' 56"	W 112 09' 06"	Wet
Meluzo Pond	T14N R3E Sec17	N 34 35' 36"	W 112 02' 48"	Wet

Dipsite Name (N to S)	Legal	Latitude	Longitude	Wet/Dry
<b>Mogollan Rim Ranger District</b>				
Kinnickinnick lake	T18 R10E Sec 35	N 34 53' 52"	W 111 18' 20"	Wet
Stoneman lake	T 16N R8E Sec 17	N 34 46' 53"	W 111 30' 42.8'	Seasonal
Long Lake	T16N R11E Sec 8	N 34 46' 39'	W 111 12' 10.6	Wet
Mule Park	T16N R9E Sec 20	N 34 45' 32"	W 111 25' 45.1"	Seasonal
Big Rock Tank	T15N R11E Sec 20	N 34 40' 31"	W 111 12' 21.9"	Seasonal
Brockie Tank	T14N R9E Sec 11	N 34 36' 40"	W 111 20' 02.2"	Seasonal
McClure Lake	T14N R10E Sec 22	N 34 35' 27"	W 111 16' 43.0"	Seasonal
Blue Ridge Reservoir	T17N R4E Sec 25	N 34 33' 17"	W 111 11' 39.5"	Wet
Phelps Dodge Tank	T13N R10E Sec 35	N 34 28' 53"	W 111 14' 27.8"	Wet
Potato Lake	T12N R9E Sec 1	N 34 27' 48"	W 111 20' 45.4"	Seasonal
Knoll Lake	T12N R12E Sec 16	N 34 25' 53"	W 111 05' 06.8	Wet
Cinch Hook	T12N R8E Sec 1	N 34 27' 18.3	W 111 27' 40.5"	?
Mogollon Ranch Lakes (1)	T15N R21E Sec 27	N 34 39' 31.8"	W 111 04' 05"	?
Mogollon Ranch Lakes (2)	T15N R21E Sec 27	N 34 39' 17.1"	W 111 04' 02.9"	?
Mogollon Ranch Lakes (3&4)	T15N R21E Sec 27	N 34 39' 52.3"	W 111 04' 6.7"	?

**BLANK**

# Medevac/Medical Emergency Procedures

All Medical Helicopters will be contacted on the following frequencies

VMED 28 – 155.340 RX/TX – Tone 123.0

VMED 29 – 155.340 RX/TX – Tone 123.0

<b>Transportation</b>			
<b>Ambulance Services</b>			
Name	Address	Phone	Paramedics
Guardian Medical	Flagstaff, AZ	911	Yes
Sedona Fire Department	Sedona, AZ	911	Yes
Blue Ridge Fire Department	BlueRidge, AZ	911	unknown
Pine/Strawberry F.D	Pine, AZ	911	Unknown
Lifestar Ambulance	Payson, Az	911	Yes
<b>Air Transport</b>			
Classic Air	Flagstaff, AZ	911	
Guardian Air	Flagstaff, AZ	911	
DPS Ranger	Flagstaff/Sedona, AZ	911	
Native Air	Payson, AZ	911	
<b>Hospitals (Level 1 Trauma)</b>			
Flagstaff Medical Center	Flagstaff, AZ	911	Level 1 Trauma
Good Samaritain Medical	Phoenix, AZ	911	Level 1 Trauma
John C. Lincoln/North Mtns	North Phoenix, AZ	911	Level 1 Trauma
Scottsdale Memorial	Scottsdale, Az	911	Level 1 Trauma
<b>Hospitals (Level 1 Trauma and Burn Center)</b>			
Maricopa Medical Center	Phoenix, AZ	911	Burn Center

### Medical Incident Report

**FOR ALL MEDICAL EMERGENCIES: IDENTIFY ON SCENE INCIDENT COMMANDER BY NAME AND POSITION AND ANNOUNCE "MEDICAL EMERGENCY" TO INITIATE RESPONSE FROM IMT COMMUNICATIONS/DISPATCH.**

**Use items one through nine to communicate situation to communications/dispatch.**

**1. CONTACT COMMUNICATIONS/DISPATCH**

*Ex: "Communications, Div. Alpha. Stand-by for Priority Medical Incident Report." (If life threatening request designated frequency be cleared for emergency traffic.)*

**2. INCIDENT STATUS: Provide incident summary and command structure.**

<b>Nature of Injury/Illness</b>		<i>Describe the injury (Ex: Broken leg with bleeding)</i>
Incident Name		<i>Geographic Name + "Medical" (Ex: Trout Meadow Medical)</i>
Incident Commander		<i>Name of IC</i>
Patient Care		<i>Name of Care Provider (Ex: EMT Smith)</i>

**3. INITIAL PATIENT ASSESSMENT: Complete this section for each patient. This is only a brief, initial assessment. Provide additional patient info after completing this 9 Line Report.**

Number of Patients:	Male / Female	Age:	Weight:
Conscious? <input type="checkbox"/> YES <input type="checkbox"/> <b>NO = MEDEVAC!</b>			
Breathing? <input type="checkbox"/> YES <input type="checkbox"/> <b>NO = MEDEVAC!</b>			
Mechanism of Injury: <i>What caused the injury?</i>			
Lat/Long (Datum WGS84) <i>Ex: N 40° 42.45' x W 123° 03.24'</i>			

**4. SEVERITY OF EMERGENCY, TRANSPORT PRIORITY**

SEVERITY	TRANSPORT PRIORITY
<input type="checkbox"/> <b>URGENT-RED</b> Life threatening injury or illness. <i>Ex: Unconscious, difficulty breathing, bleeding severely, 2° – 3° burns more than 4 palm sizes, heat stroke, disoriented.</i>	Ambulance or MEDEVAC helicopter. Evacuation need is <b>IMMEDIATE</b> .
<input type="checkbox"/> <b>PRIORITY-YELLOW</b> Serious Injury or illness. <i>Ex: Significant trauma, not able to walk, 2° – 3° burns not more than 1-2 palm sizes.</i>	Ambulance or consider air transport if at remote location. Evacuation may be <b>DELAYED</b> .
<input type="checkbox"/> <b>ROUTINE-GREEN</b> Not a life threatening injury or illness. <i>Ex: Sprains, strains, minor heat-related illness.</i>	Non-Emergency. Evacuation considered <b>Routine of Convenience</b> .

**5. TRANSPORT PLAN:**

**Air Transport:** (Agency Aircraft Preferred)

<input type="checkbox"/> Helispot	<input type="checkbox"/> Short-haul/Hoist	<input type="checkbox"/> Life Flight	<input type="checkbox"/> Other
<b>Ground Transport:</b>			
<input type="checkbox"/> Self-Extract	<input type="checkbox"/> Carry-Out	<input type="checkbox"/> Ambulance	<input type="checkbox"/> Other

**6. ADDITIONAL RESOURCE/EQUIPMENT NEEDS:**

<input type="checkbox"/> Paramedic/EMT(s)	<input type="checkbox"/> Crew(s)	<input type="checkbox"/> SKED/Backboard/C-Collar
<input type="checkbox"/> Burn Sheet(s)	<input type="checkbox"/> Oxygen	<input type="checkbox"/> Trauma Bag
<input type="checkbox"/> Medication(s)	<input type="checkbox"/> IV/Fluid(s)	<input type="checkbox"/> Cardiac Monitor/AED
<input type="checkbox"/> Other (i.e. splints, rope rescue, wheeled litter)		

**7. COMMUNICATIONS:**

Function	Channel Name/Number	Receive (Rx)	Tone/NAC *	Transmit (Tx)	Tone/NAC *
<i>Ex: Command</i>	<i>Forest Rpt, Ch. 2</i>	<i>168.3250</i>	<i>110.9</i>	<i>171.4325</i>	<i>110.9</i>
COMMAND					
AIR-TO-GRND					
TACTICAL					

\*(NAC for digital radio system)

**8. EVACUATION LOCATION:**

Lat/Long (Datum WGS84) <i>EX: N 40 42.45' x W 123 03.24'</i>	
Patient's ETA to Evacuation Location:	
Helispot/Extraction Size and Hazards:	

**9. CONTINGENCY:**

**Considerations:** *If primary options fail, what actions can be implemented in conjunction with primary evacuation method? Be thinking ahead...*

**REMEMBER:**

**Confirm ETA's of resources ordered  
Act according to your level of training  
Be Alert. Keep Calm. Think Clearly. Act Decisively.**



AOR 461



AOR 462



AOR 471



AOR 472



AOR 473



AOR 474





AOR 481



AOR 482



AOR 483



AOR 484



AOR 486



AOR 487

