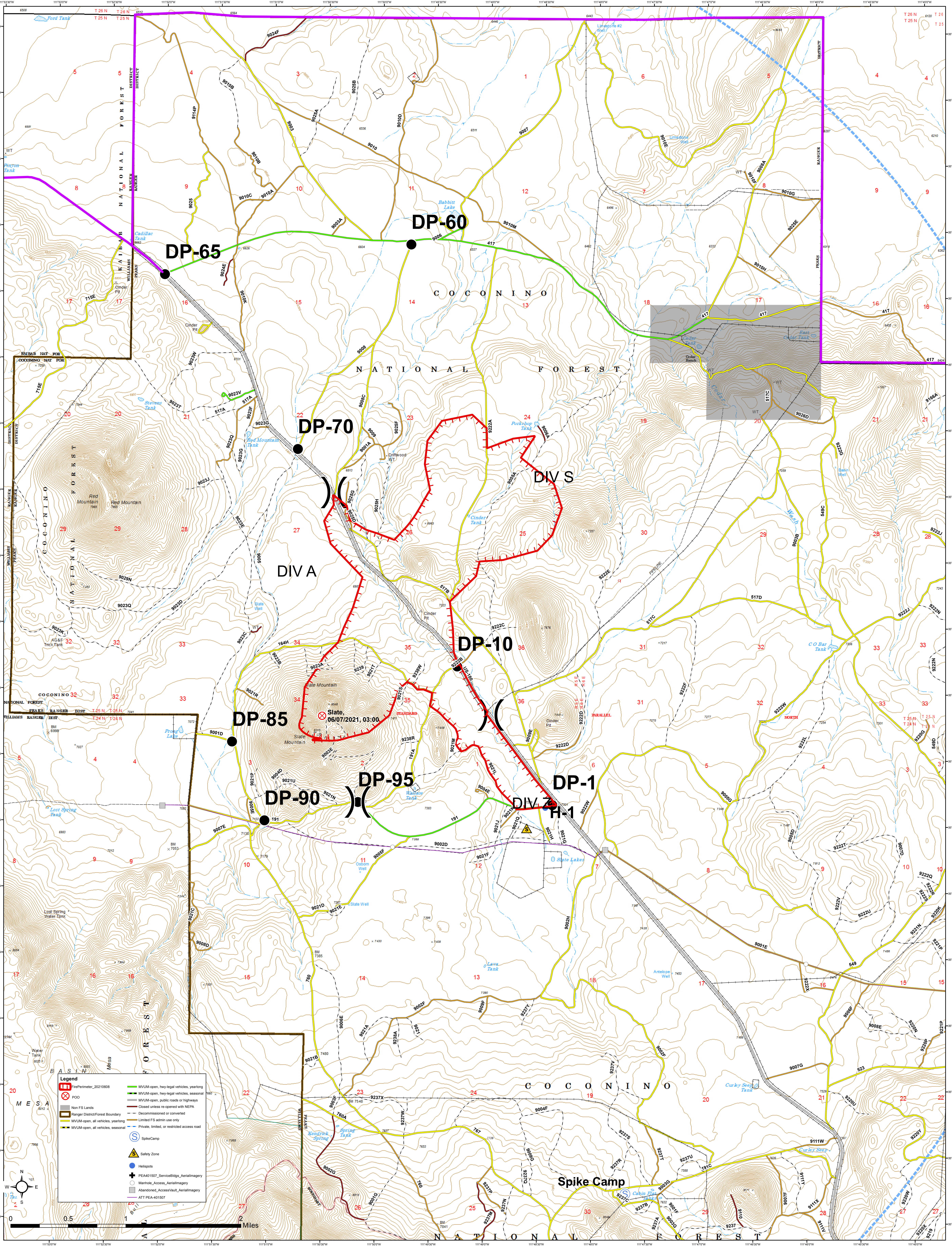


# Coconino National Forest

Flagstaff Ranger District

Slate Ops Map - 6/9/2021

2060 acres



**Legend**

- Perimeter\_20210608
- MVUM-open, hwy-legal vehicles, yearlong
- MVUM-open, hwy-legal vehicles, seasonal
- MVUM-open, public roads or highways
- Closed unless re-opened with NEPA
- Decommissioned or converted
- Limited FS admin use only
- Private, limited, or restricted access road
- Spike Camp
- Safety Zone
- Hellspots
- PEAK1507\_ServiceBldgs\_AerialImagery
- Manhole\_Access\_AerialImagery
- Abandoned\_AccessVault\_AerialImagery
- ATT\_PEA-401507

