

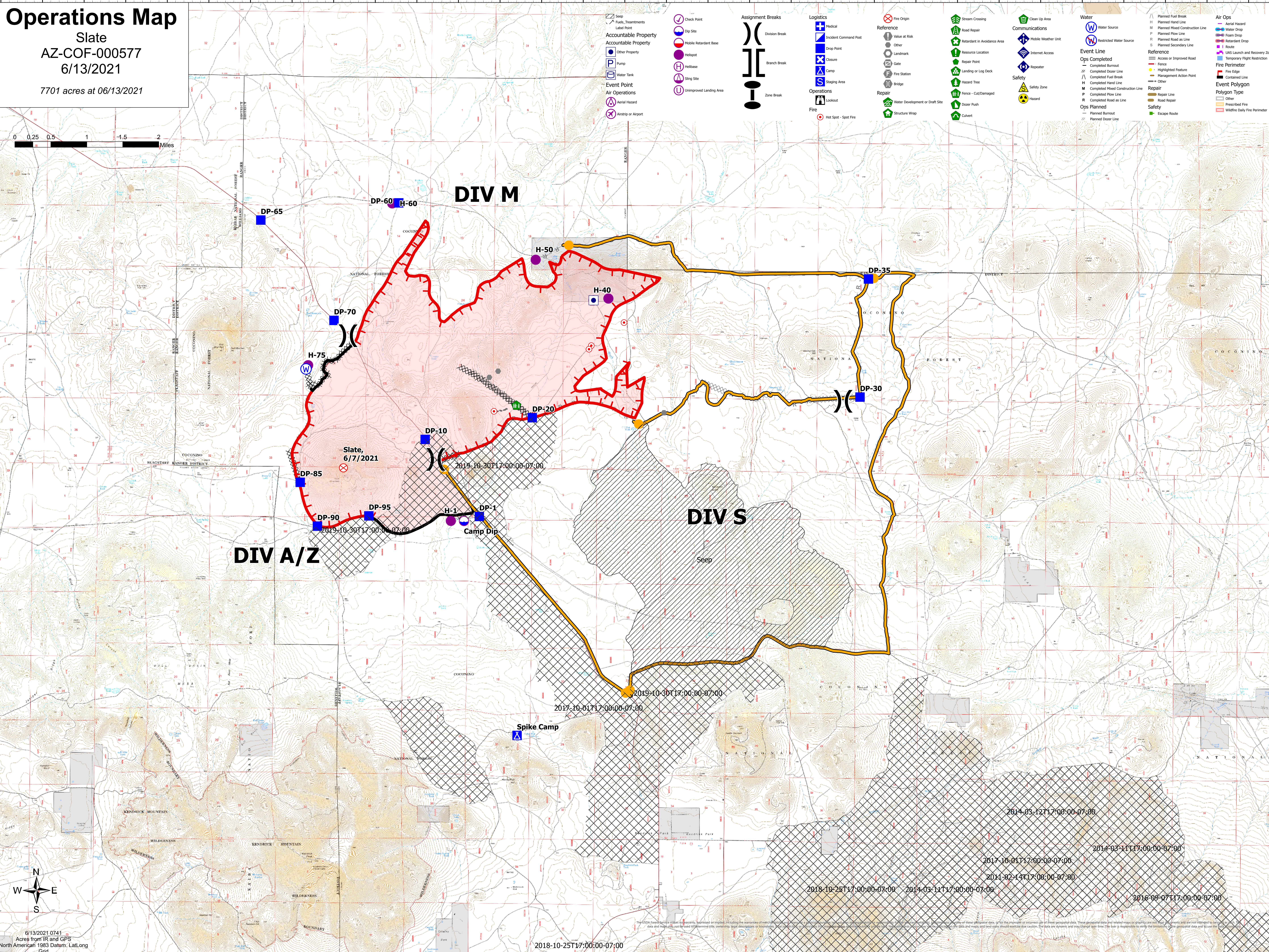
# Operations Map

Slate  
AZ-COF-000577  
6/13/2021

7701 acres at 06/13/2021



<b>Accountable Property</b> Seep Fuel Treatment Label Point Other Property Pump Water Tank Event Point Air Operations Aerial Hazard Airstrip or Airport	<b>Check Point</b> Dip Site Mobile Retardant Base Helispot Helibase Slip Site Unimproved Landing Area	<b>Assignment Breaks</b> Division Break Branch Break Zone Break	<b>Logistics</b> Medical Incident Command Post Drop Point Closure Camp Staging Area Lookout Fire	<b>Reference</b> Fire Origin Value at Risk Other Landmark Gate Fire Station Bridge Repair Water Development or Draft Site Structure Wrap	<b>Stream Crossing</b> Road Repair Retardant in Avoidance Area Resource Location Repair Point Landing or Log Deck Hazard Tree Fence - Cld/Damaged Culvert	<b>Clean Up Area</b> Mobile Weather Unit Internet Access Repeater Safety Safety Zone Hazard	<b>Water</b> Water Source Restricted Water Source	<b>Event Line</b> Ops Completed Completed Burnout Completed Dozer Line Completed Hand Line Completed Road Construction Line Completed PLOW Line Ops Planned Planned Burnout Planned Dozer Line	<b>Planned Fuel Break</b> Planned Hand Line Planned Mixed Construction Line Planned PLOW Line Planned Road as Line Planned Secondary Line	<b>REFERENCE</b> Access or Improved Road Highlighted Feature Management Action Point Other Completed Hand Line Completed Mixed Construction Line Completed PLOW Line Completed Road as Line Planned Burnout Planned Dozer Line	<b>Air Ops</b> Aerial Hazard Water Drop Foam Drop Retardant Drop Route UAS Launch and Recovery Zone Temporary Flight Restriction	<b>Fire Perimeter</b> Fire Edge Contained Line	<b>Event Polygon</b> Polygon Type Other Prescribed Fire Wildfire Daily Fire Perimeter
---	---	--	--	--	---	---	---	---	--	--	---	--	---



6/13/2021 0741  
Acres from IR and GPS  
North American 1983 Datum, Lat/Long  
Grid

The USDA Forest Service is not responsible for errors or for any consequences arising from the use of the information contained in this map. The data and maps are dynamic and may change over time. The user is responsible to verify the accuracy of the geographic data and to use the information for the intended purpose.