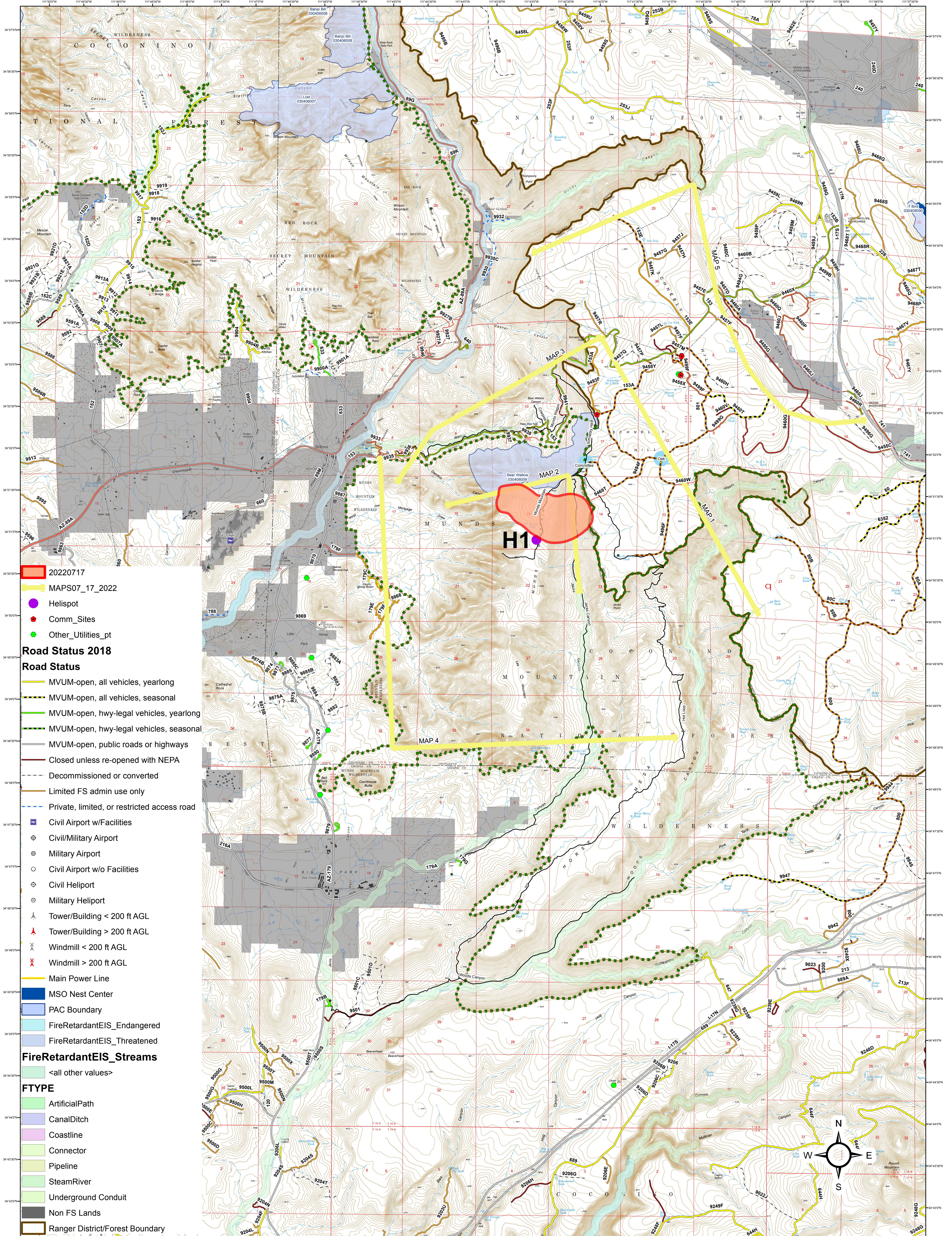
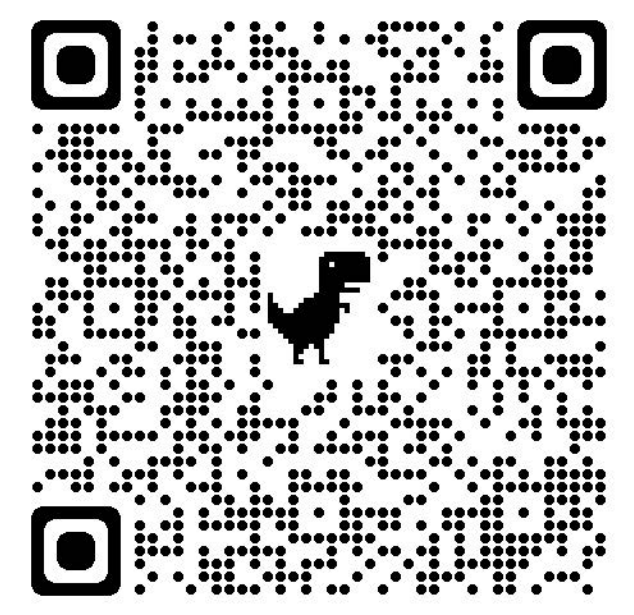


Coconino National Forest

Red Rock Ranger District

Committee Ops Map 7/17/2022 - 443 Acres



- 20220717
- MAPS07_17_2022
- Helispot
- Comm_Sites
- Other_Uilities_pt
- Road Status 2018**
- Road Status**
- MVUM-open, all vehicles, yearlong
- MVUM-open, all vehicles, seasonal
- MVUM-open, hwy-legal vehicles, yearlong
- MVUM-open, hwy-legal vehicles, seasonal
- MVUM-open, public roads or highways
- Closed unless re-opened with NEPA
- Decommissioned or converted
- Limited FS admin use only
- Private, limited, or restricted access road
- Civil Airport w/Facilities
- Civil/Military Airport
- Military Airport
- Civil Airport w/o Facilities
- Civil Helipoint
- Military Helipoint
- Tower/Building < 200 ft AGL
- Tower/Building > 200 ft AGL
- Windmill < 200 ft AGL
- Windmill > 200 ft AGL
- Main Power Line
- MSO Nest Center
- PAC Boundary
- FireRetardantEIS_Endangered
- FireRetardantEIS_Threatened
- FireRetardantEIS_Streams**
- <all other values>
- FTYPE**
- ArtificialPath
- CanalDitch
- Coastline
- Connector
- Pipeline
- SteamRiver
- Underground Conduit
- Non FS Lands
- Ranger District/Forest Boundary

