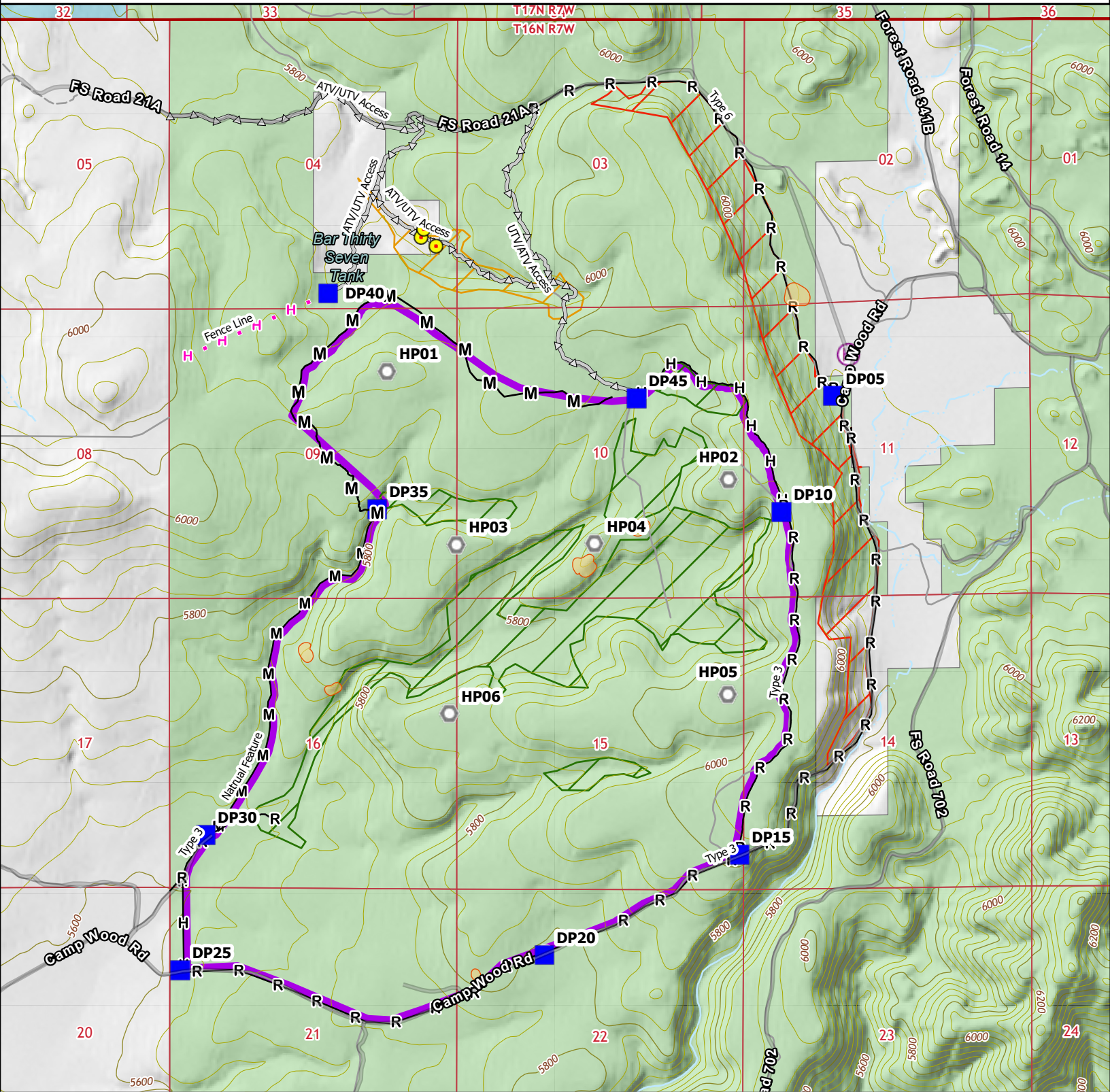




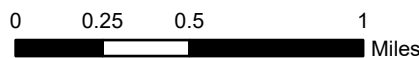
Yolo Ranch RX (2296 Acres)

Prescott National Forest

Chino Valley Ranger District



- | | | | | | |
|------------------------|------------------------------|----------------------|-------------------------------------|--------------------------|--------------------------|
| Critical Holding Point | High Point | UTV/ATV | Pine Stand Priorities | | Ownership |
| Drop Point | H — Handline Complete | Proposed Handline | 1st Priority - 369 Acres | State | US Forest Service (USFS) |
| Helispot | M — Mixed Completed | Fire Sensitive Sites | 2nd Priority - 50 Acres | US Forest Service (USFS) | Private |
| | R — Road | Yolo RX | Not Currently Targeting - 215 Acres | | |



1:35,000