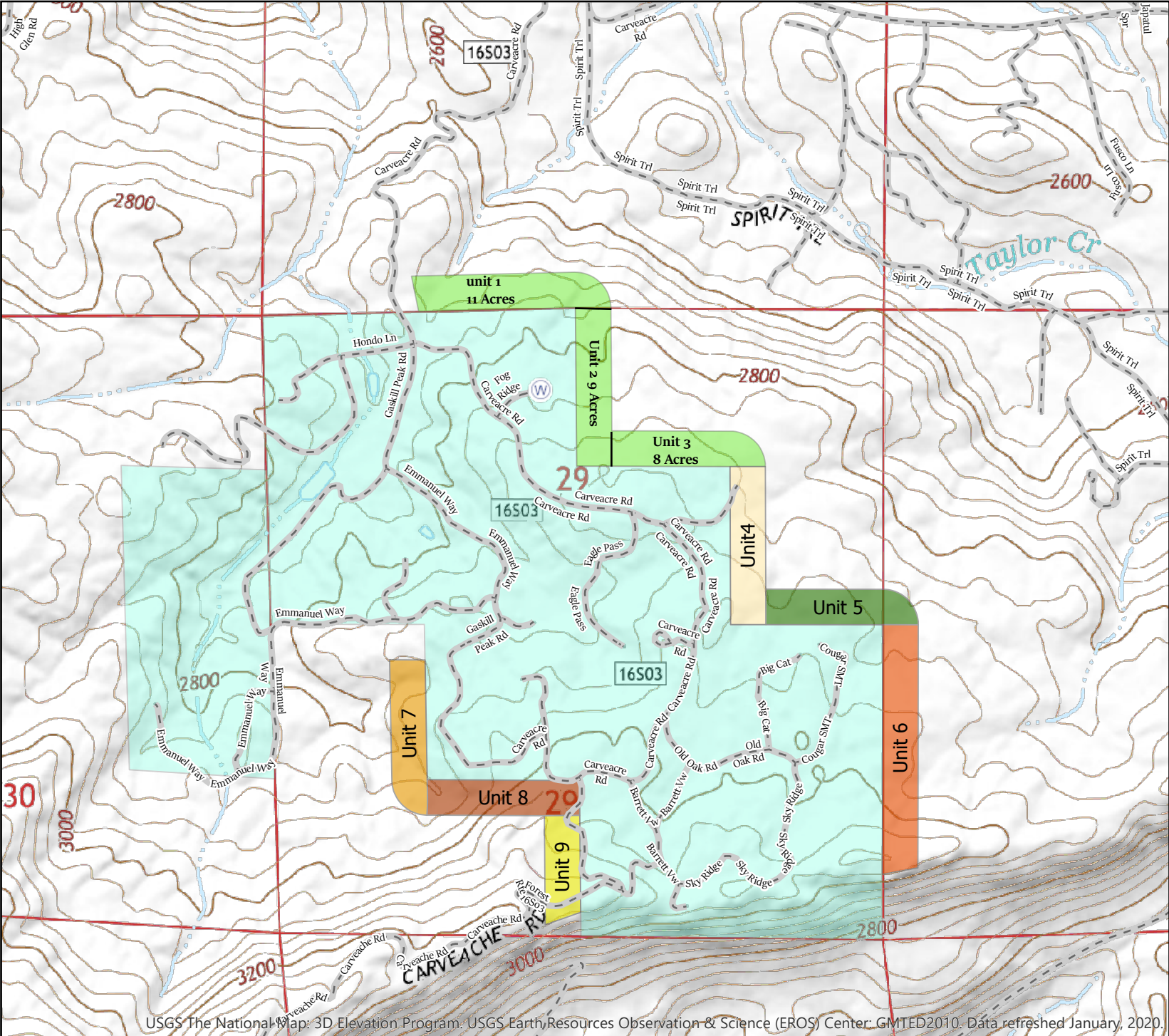


# CARVEACRE

| CarveAcres  |                 |
|---|-----------------|
| Status  |                 |
| <span style="background-color: #90EE90; border: 1px solid black; display: inline-block; width: 15px; height: 10px;"></span> | Complete        |
| Unit  |                 |
| <span style="background-color: #FFFACD; border: 1px solid black; display: inline-block; width: 15px; height: 10px;"></span> | Unit 4 9 Acres  |
| <span style="background-color: #228B22; border: 1px solid black; display: inline-block; width: 15px; height: 10px;"></span> | Unit 5 8 Acres  |
| <span style="background-color: #FF8C00; border: 1px solid black; display: inline-block; width: 15px; height: 10px;"></span> | Unit 6 14 Acres |
| <span style="background-color: #FFD700; border: 1px solid black; display: inline-block; width: 15px; height: 10px;"></span> | Unit 7 9 Acres  |
| <span style="background-color: #8B4513; border: 1px solid black; display: inline-block; width: 15px; height: 10px;"></span> | Unit 8 9 Acres  |
| <span style="background-color: #FFFF00; border: 1px solid black; display: inline-block; width: 15px; height: 10px;"></span> | Unit 9 6 Acres  |

**84 Acres**

**28 Acres  
Complete**



USGS The National Map: 3D Elevation Program. USGS Earth Resources Observation & Science (EROS) Center. GMTED2010. Data refreshed January, 2020.