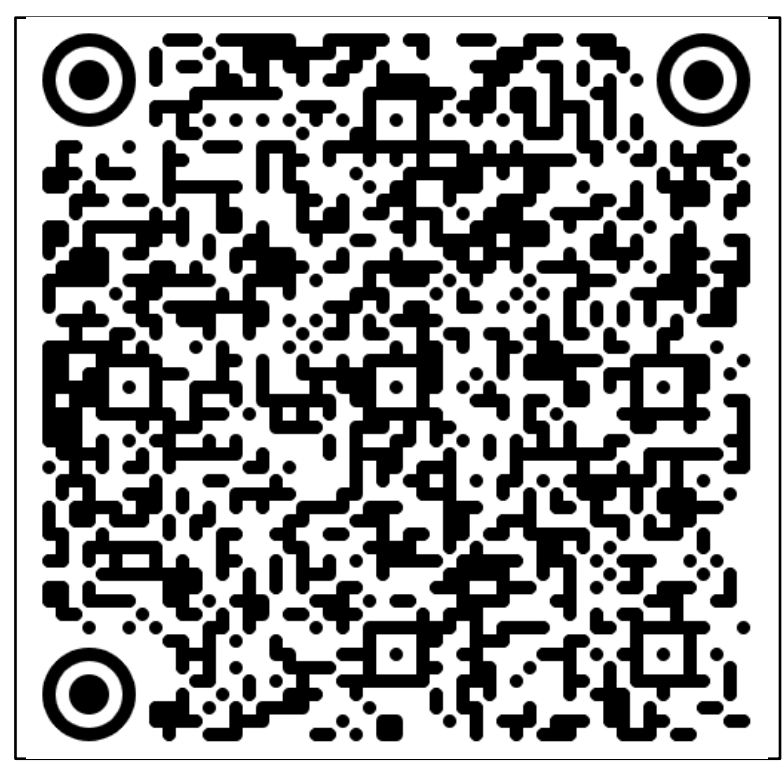
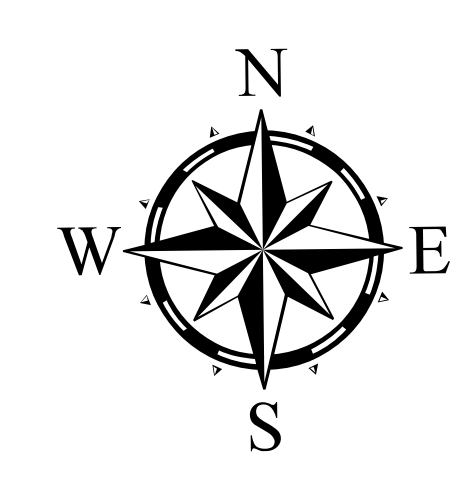


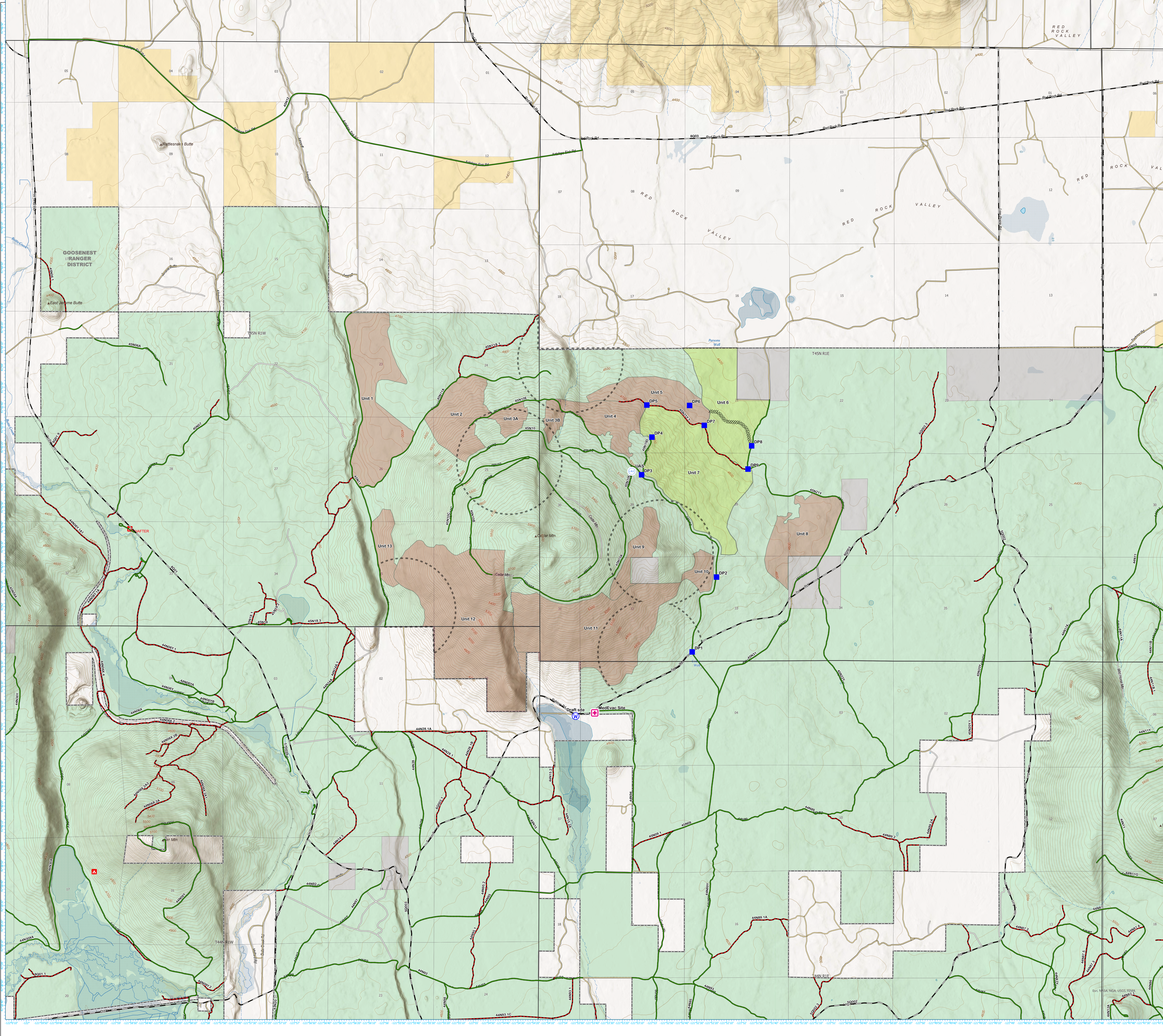
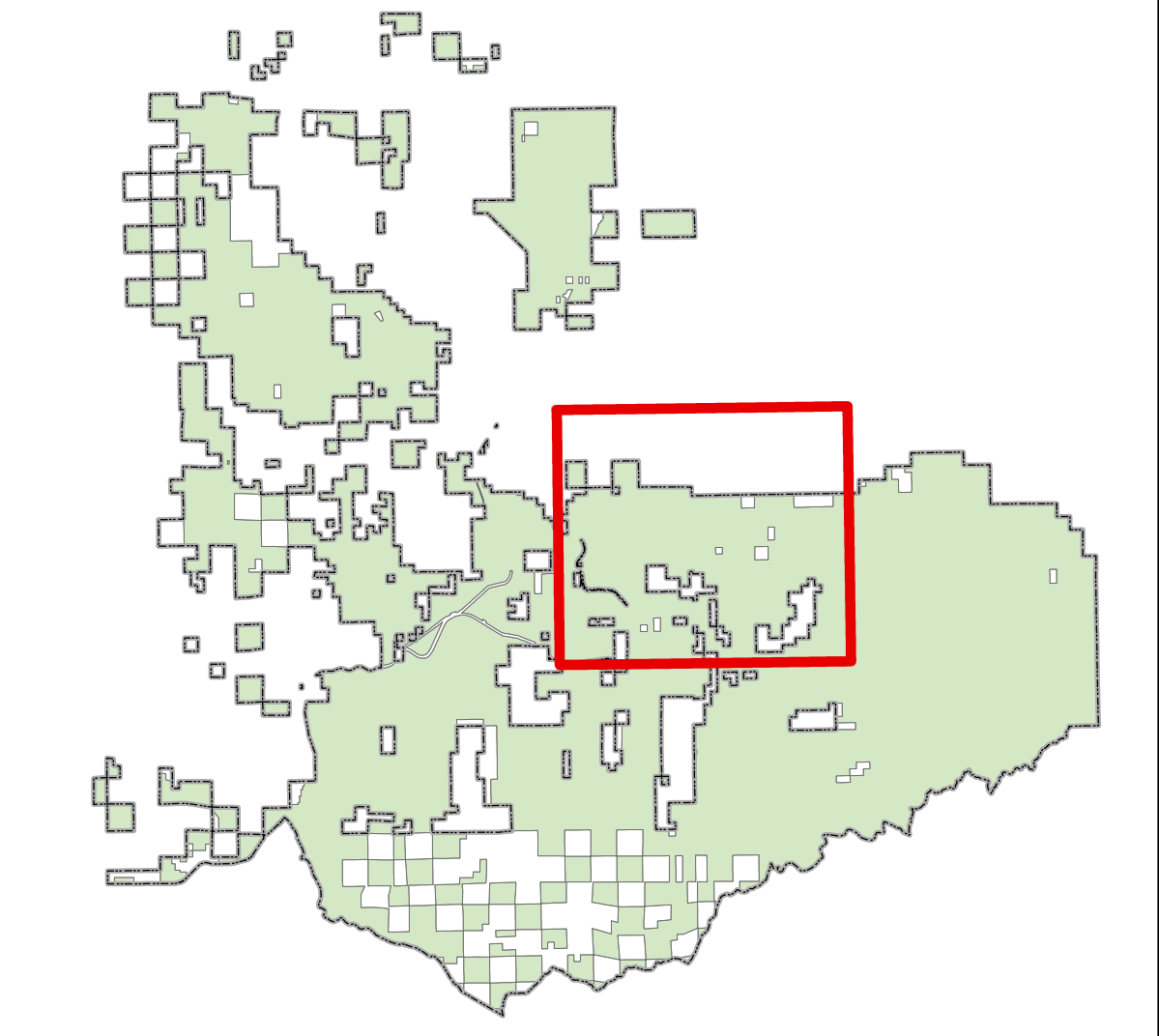


Legend

- Unit ID - Acres**
- Unit 1 - 395 ac
  - Unit 10 - 50 ac
  - Unit 11 - 595 ac
  - Unit 12 - 793 ac
  - Unit 13 - 77 ac
  - Unit 2 - 206 ac
  - Unit 3A - 47 ac
  - Unit 3B - 35 ac
  - Unit 4 - 152 ac
  - Unit 5 - 167 ac
  - Unit 6 - 306 ac
  - Unit 7 - 505 ac
  - Unit 8 - 226 ac
  - Unit 9 - 91 ac
- Drop Point**
- Draft site**
- MedVac - 41° 41.112'N x 121° 53.641'W**
- UAS**
- Roads By System 8 Classes**
- State Highway/County Road/Interstate
  - Forest Classified/Managed Road
  - Forest Classified Road, Decommissioned
  - Forest Unclassified Road
  - Forest Unclassified Road, Decommissioned
  - Adjacent Forest Road
  - Private/Other Road
- KNF Administrative Boundary**
- NON-FS Lands within Admin Boundary**
- LOP - Nov15 to July15 - No Noise, Smoke**



0 0.23 0.45 0.9 1.35 Miles



The Forest Service uses the most current and complete data available. GIS data and product accuracy may vary. They may be developed from sources of differing accuracy, accurate only at certain scales, based on modeling or interpretation, incomplete when being created or revised, etc. Using GIS products for purposes other than those for which they were created, may yield inaccurate or misleading results. The Forest Service reserves the right to correct, update, modify, or replace GIS products without notification. By use/reader - 3/20/2026 - C:\Users\jacob\Documents\MapInfo\WorkSpace\_CedarMountainRX\Burning\032026\032026\_032026.aprx\032026\_032026.aprx