



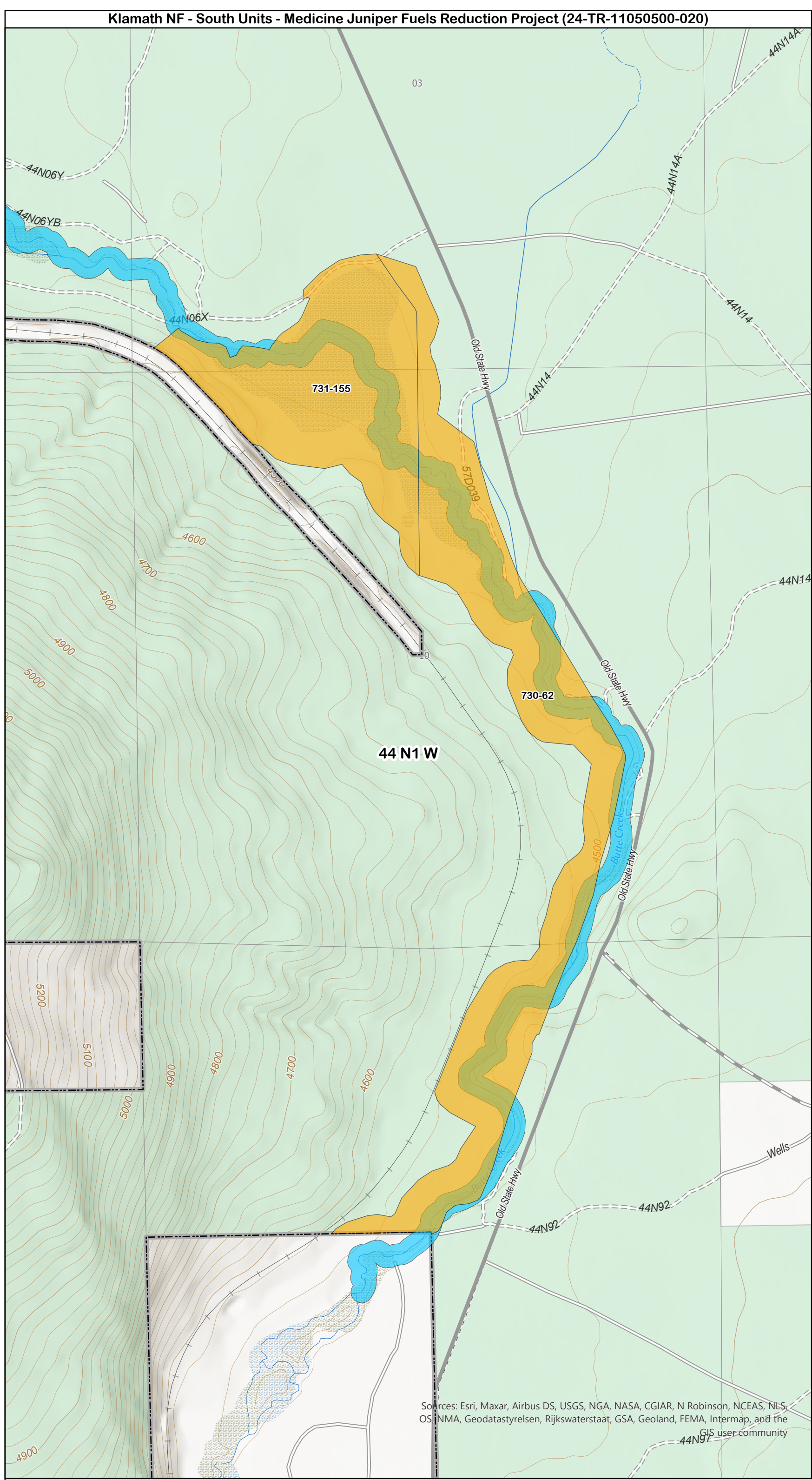
- KNF Administrative Boundary
- KNF Motor Vehicle Use
- 1 Roads Open to All Vehicles, Yearlong
  - 2 Roads Open to All Vehicles, Seasonal
  - 3 Roads Open to Highway Legal Vehicles Only, Yearlong
  - 4 Roads Open to Highway Legal Vehicles Only, Seasonal

Juniper Reduction Units - 468.5 acres

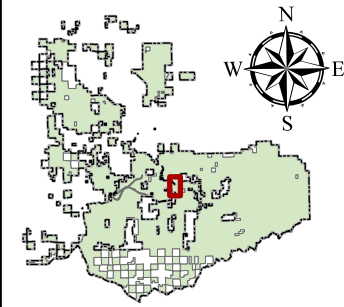
Unit # , Acres

- 720-33-1 , 5.9 ac
- 720-121 , 1.1 ac
- 720-122 , 1.3 ac
- 721-116 , 7.0 ac
- 721-119 , 26.9 ac
- 721-120 , 17.7 ac
- 721-121 , 12.3 ac
- 721-129 , 74.8 ac
- 721-131 , 114.2 ac
- 721-135 , 25.9 ac
- 730-62 , 106.8 ac
- 731-155 , 74.5 ac

- Butte Creek Stream
- Buffer - 112.8 acres in Treatment Units



Sources: Esri, Maxar, Airbus DS, USGS, NGA, NASA, CGIAR, N Robinson, NCEAS, NLS, OS, NMA, Geodatastyrelsen, Rijkswaterstaat, GSA, Geoland, FEMA, Intermap, and the GIS user community



0 0.05 0.1 0.2 Miles