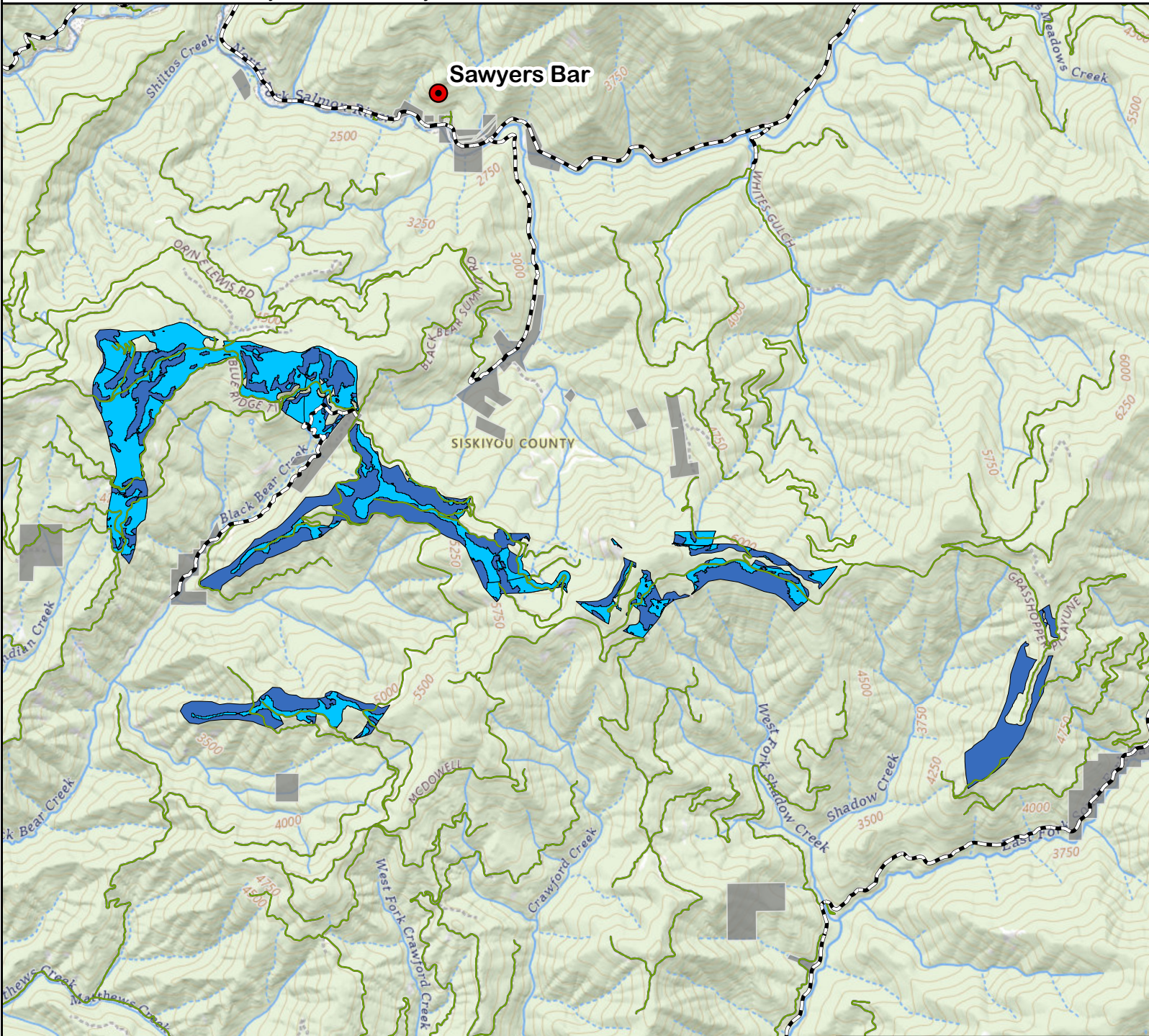
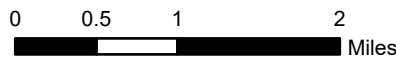








Eddy Gulch LSR Project - Fuel Reduction Zones - Mechanical Mastication

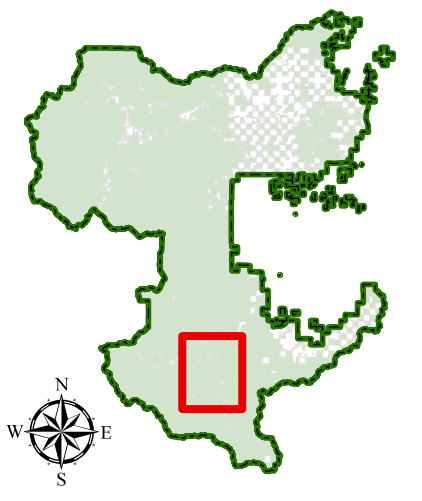


Salmon Scott River Ranger District - Klamath National Forest



Legend

-  KNF Administrative Boundary
-  Private Property
-  State Highway / County Road
-  Forest Classified / Managed Road
-  Fuel Reduction Zone within WUI - Mastication Areas
-  Mastication Areas - Slopes 35% or less



The Forest Service uses the most current and complete data available. GIS data and product accuracy may vary. They may be: developed from sources of differing accuracy, accurate only at certain scales, based on modeling or interpretation, incomplete while being created or revised, etc. Using GIS products for purposes other than those for which they were created, may yield inaccurate or misleading results. The Forest Service reserves the right to correct, update, modify, or replace, GIS products without notification. By: wschroeder - 5/12/2024 - C:\Users\wschroeder\Documents\GIS\CPOWEddyLSR\EddyLSR_FuelsPOW_20240129.aprx\EddyLSR_FuelsPOW_20240129