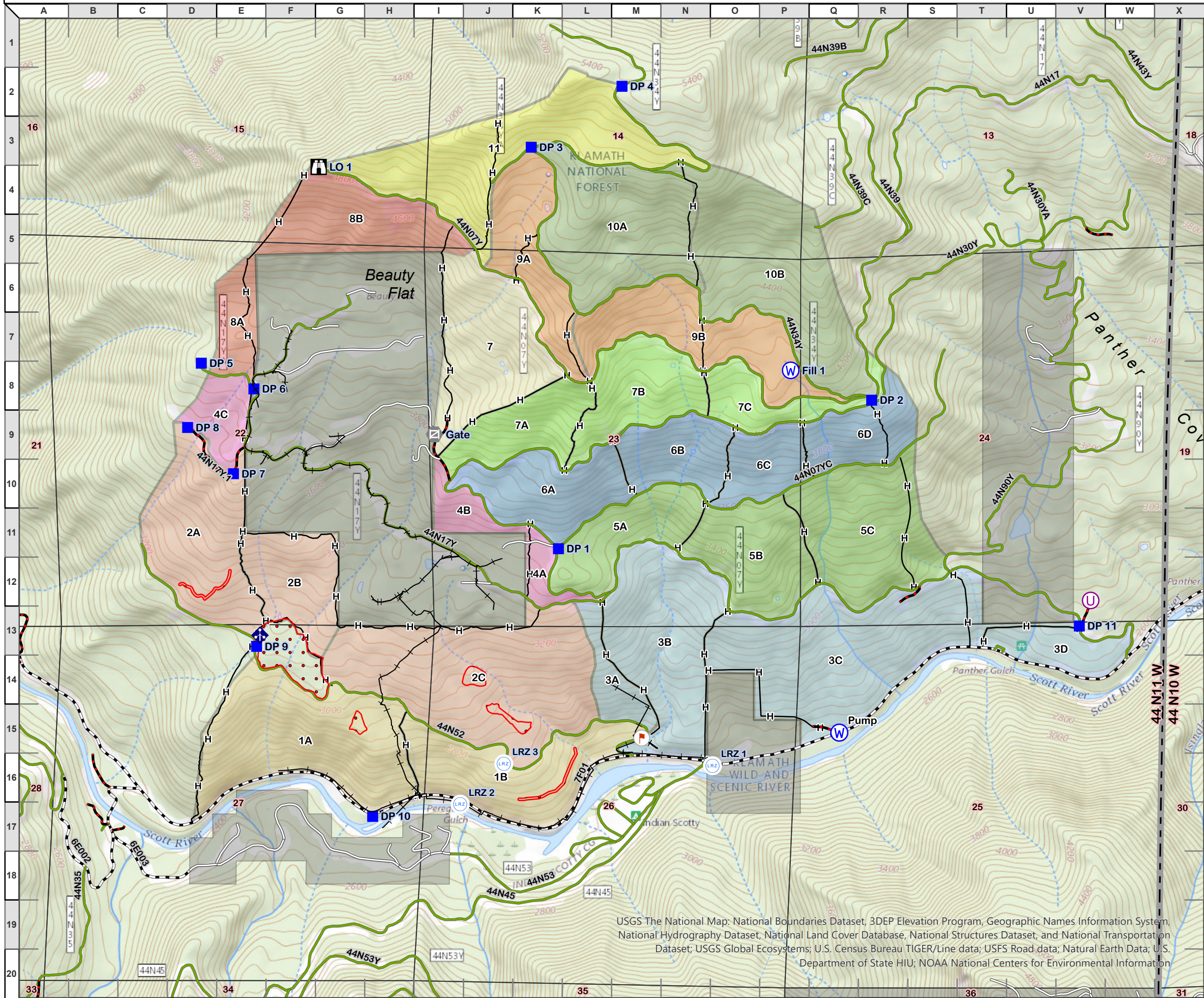
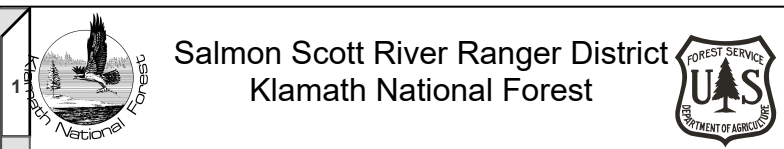


Scott Bar Mountain Underburn - Operations - rev 04/18/2024



### Legend

- DP 1, +41° 38.650' x -123° 04.956'
- DP 2, +41° 38.996' x -123° 03.985'
- DP 3, +41° 39.583' x -123° 05.041'
- DP 4, +41° 39.725' x -123° 04.760'
- DP 5, +41° 39.080' x -123° 06.064'
- DP 6, +41° 39.021' x -123° 05.901'
- DP 7, +41° 38.823' x -123° 05.964'
- DP 8, +41° 38.931' x -123° 06.106'
- DP 9, +41° 38.422' x -123° 05.891'
- DP 10, +41° 38.027' x -123° 05.531'
- DP 11, +41° 38.471' x -123° 03.341'
- Fill 1, +41° 39.065' x -123° 04.236'
- Gate, +41° 38.916' x -123° 05.341'
- LO 1, +41° 39.537' x -123° 05.701'
- Pump Fill Site
- MedEvac - 41° 38.531 x 123° 03.306
- PRAWS
- LRZ 1 - 41° 38.146 x 123° 04.478
- LRZ 2 - 41° 38.056 x 123° 05.260
- LRZ 3 - 41° 38.150 x 123° 05.125
- Heritage Exclusion Protection Sites
- Scott Bar Mtn - Hand Lines
- Overhead Phonenumber
- Telephone / Fiber Lines
- State Highway / County Road
- Forest Classified / Managed Road
- Forest Classified Road, Decommissioned
- Forest Unclassified Road
- Forest Unclassified Road, Decommissioned
- Adjacent Forest Road

### OWNERSHIP

- NON-FS

### Burn Block - Acres

- 1A - 98 ac
- 1B - 64 ac
- 2A - 73 ac
- 2B - 41 ac
- 2C - 128 ac
- 3A - 17 ac
- 3B - 85 ac
- 3C - 125 ac
- 3D - 24 ac
- 4A - 10 ac
- 4B - 15 ac
- 4C - 20 ac
- 5A - 40 ac
- 5B - 50 ac
- 5C - 74 ac
- 6A - 48 ac
- 6B - 34 ac
- 6C - 26 ac
- 6D - 32 ac
- 7 - 69 ac
- 7A - 36 ac
- 7B - 45 ac
- 7C - 26 ac
- 8A - 21 ac
- 8B - 56 ac
- 9A - 46 ac
- 9B - 63 ac
- 10A - 86 ac
- 10B - 103 ac
- 11 - 98 ac

USGS The National Map: National Boundaries Dataset, 3DEP Elevation Program, Geographic Names Information System, National Hydrography Dataset, National Land Database, National Structures Dataset, and National Transportation Dataset; USGS Global Ecosystems; U.S. Census Bureau TIGER/Line data; USFS Road data; Natural Earth Data; U.S. Department of State HIU; NOAA National Centers for Environmental Information

