

FIRE TRANSPORTATION WEAVERVILLE NORTH



FIRE SUPPRESSION INFORMATION

- LOOKOUT
- WATER
- AIRPORT
- HELISPOT
- FIRE STATIONS
- DIRECT PROTECTION AREA

MISCELLANEOUS

- Cave/Mine Tunnel Entrance/Adit
- Cemetery or Grave
- Mine Shaft
- Prospect
- Quarry or Open Pit Mine
- Tanks/Tower- Large
- Tanks/Tower- Small



- DIP SITE
- DISPERSED CAMP
- REPEATER
- MOUNTAIN PEAK
- RIVER ACCESS
- USFS RANGER STATION
- TRANSMISSION LINE

LAND DESIGNATIONS

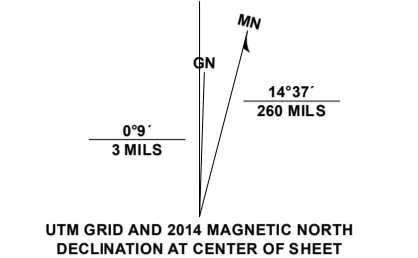
- SHASTA-TRINITY NATIONAL FOREST
- NON-FOREST SERVICE WITHIN FOREST BOUNDARY
- RANGER DISTRICT BOUNDARY
- OTHER NATIONAL FOREST
- TOWNSHIP AND RANGE
- SECTIONS
- COUNTY BOUNDARY
- LATE SUCCESSIONAL RESERVE
- WILDERNESS

TRANSPORTATION - ROADS

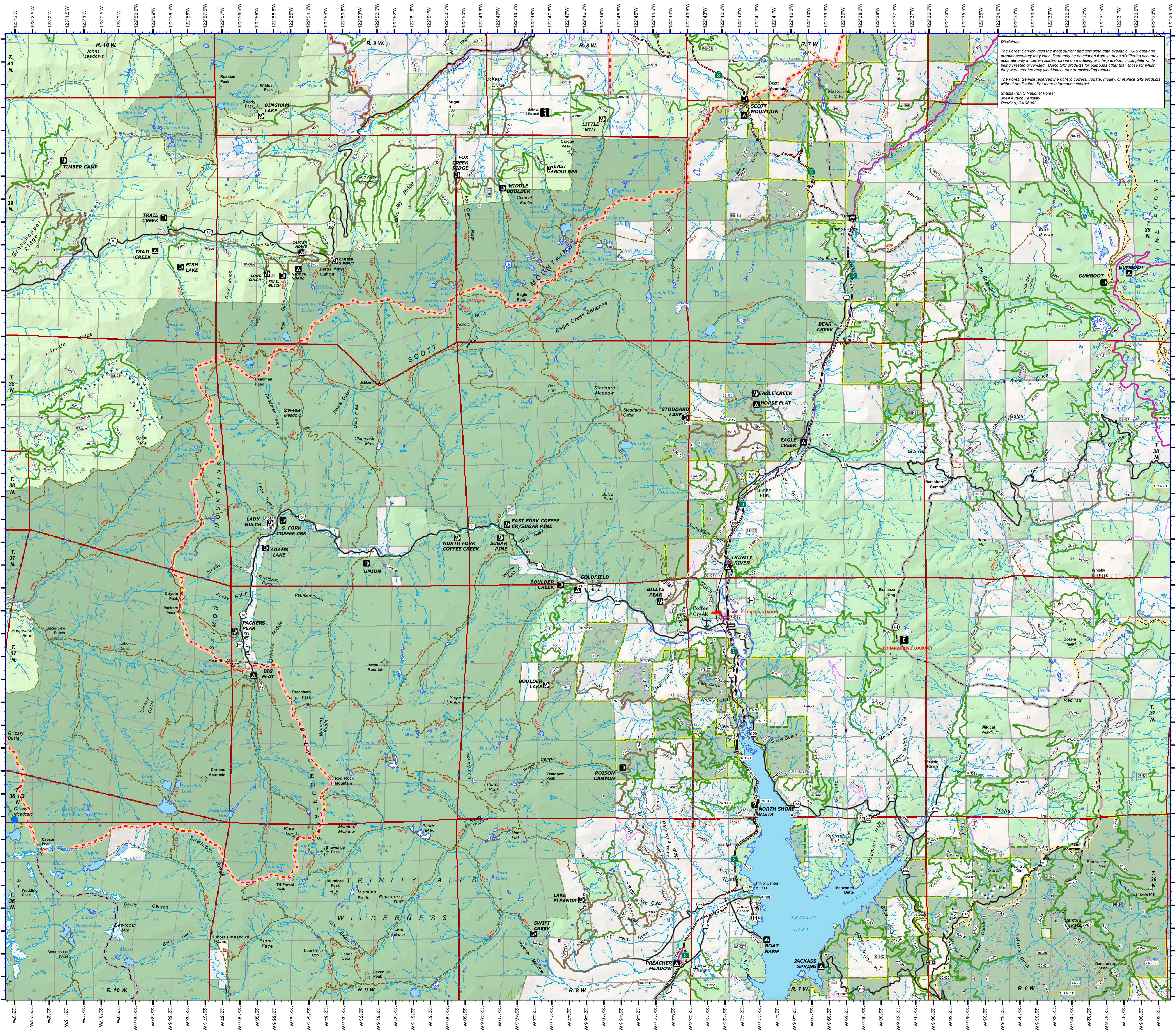
- STATE HIGHWAY
- LEVEL 1 (CLOSED ROAD)
- LEVEL 2 (OPEN TO ALL VEHICLES)
- LEVEL 3 (OPEN TO HIGHWAY LEGAL VEHICLES)
- LEVEL 4 (MODERATE DEGREE OF COMFORT)
- ADMIN ONLY
- DECOMMISSIONED
- OTHER PUBLIC
- PRIVATE
- UNAUTHORIZED ROUTES
- PERMIT REQUIRED
- CONVERTED TO MOTORIZED TRAIL
- STATUS UNKNOWN

TRANSPORTATION - TRAILS

- NATIONAL FOREST SYSTEM TRAIL
 - OTHER FEDERAL OR STATE TRAIL
 - PACIFIC CREST TRAIL
 - UNAUTHORIZED TRAIL
 - DECOMMISSIONED TRAIL
- ## HYDRO
- INTERMITTENT STREAM
 - PERENNIAL STREAM OR RIVER
 - CANAL DITCH
 - CONNECTOR
 - SPRINGS
 - LAKE/POND
 - ICE MASS
 - SWAMP/MARSH



Prepared 22 July 2015 by Shasta-Trinity National Forest GIS (SO).
This map is filed @ T\F\SNFS\Shasta\Trinity\Program\5100 Fire Mgmt\GIS\SHF_Transportation



Disclaimer:
The Forest Service uses the most current and complete data available. GIS data and product accuracy may vary. Data may be developed from sources of differing accuracy, accurate only at certain scales. Based on modeling or observation, incomplete while being created or revised. Using GIS products for purposes other than those for which they were created may yield inaccurate or misleading results.
The Forest Service reserves the right to correct, update, modify, or replace GIS products without notification. For more information contact:
Shasta-Trinity National Forest
3644 Avtech Parkway
Redding, CA 96002