

# FIRE TRANSPORTATION SHASTA LAKE NORTH

Prepared 22 June 2015 by: T. Putt (Shasta-Trinity National Forest SO)  
This map is filed @ T:\GIS\NF\ShastaTrinity\Program\GIS\SHF\_transportation



### FIRE SUPPRESSION INFORMATION

LOOKOUTS	WATER SOURCES	DIRECT PROTECTION AREA
LOOKOUT	WATER	DIRECT PROTECTION AREA
MISCELLANEOUS	FIRE STATIONS	
HELISPOT	FIRE STATIONS	

### MISCELLANEOUS

- CAVE/MINE TUNNEL ENTRANCE/ADIT
- CEMETERY OR GRAVE
- LOCATED OR LANDMARK OBJECT
- MINE SHAFT

### LAND DESIGNATIONS

- SHASTA-TRINITY NATIONAL FOREST
- NON-FOREST SERVICE WITHIN FOREST BOUNDARY
- RANGER DISTRICT BOUNDARY
- TOWNSHIP AND RANGE
- SECTIONS
- COUNTY BOUNDARY
- LATE SUCCESSIONAL RESERVE
- WILDERNESS

### TRANSPORTATION - TRAILS

- NATIONAL FOREST SYSTEM TRAIL
- OTHER FEDERAL OR STATE TRAIL
- PACIFIC CREST TRAIL
- UNAUTHORIZED TRAIL
- DECOMMISSIONED TRAIL

### TRANSPORTATION - ROADS

- INTERSTATE HIGHWAY
- INTERSTATE HIGHWAY RAMP
- STATE HIGHWAY
- US HIGHWAY
- LEVEL 3 (OPEN TO HIGHWAY LEGAL VEHICLES)
- LEVEL 2 (OPEN TO ALL VEHICLES)
- LEVEL 1 (CLOSED ROAD)
- ADMIN ONLY
- OTHER PUBLIC
- PRIVATE
- UNAUTHORIZED ROUTES
- PERMIT REQUIRED
- STATUS UNKNOWN

### HYDRO

- INTERMITTENT STREAM
- PERENNIAL STREAM OR RIVER
- CANAL/DITCH
- CONNECTOR
- PIPELINE/AQUEDUCT
- PIPELINE/AQUEDUCT UNDERGROUND
- PIPELINE PENSTOCK OR SIPHON

### DEVELOPED RECREATION POINTS

- CAMPGROUND
- TRAILHEAD

### USFS RANGER STATION

- PIT
- POWER SUBSTATION
- PROSPECT
- QUARRY OR OPEN PIT MINE
- TANKS/TOWER - SMALL
- REPEATER
- MOUNTAIN PEAK
- RAILROAD
- UNDERGROUND PIPELINE
- TRANSMISSION LINE

### BUREAU OF LAND MANAGEMENT

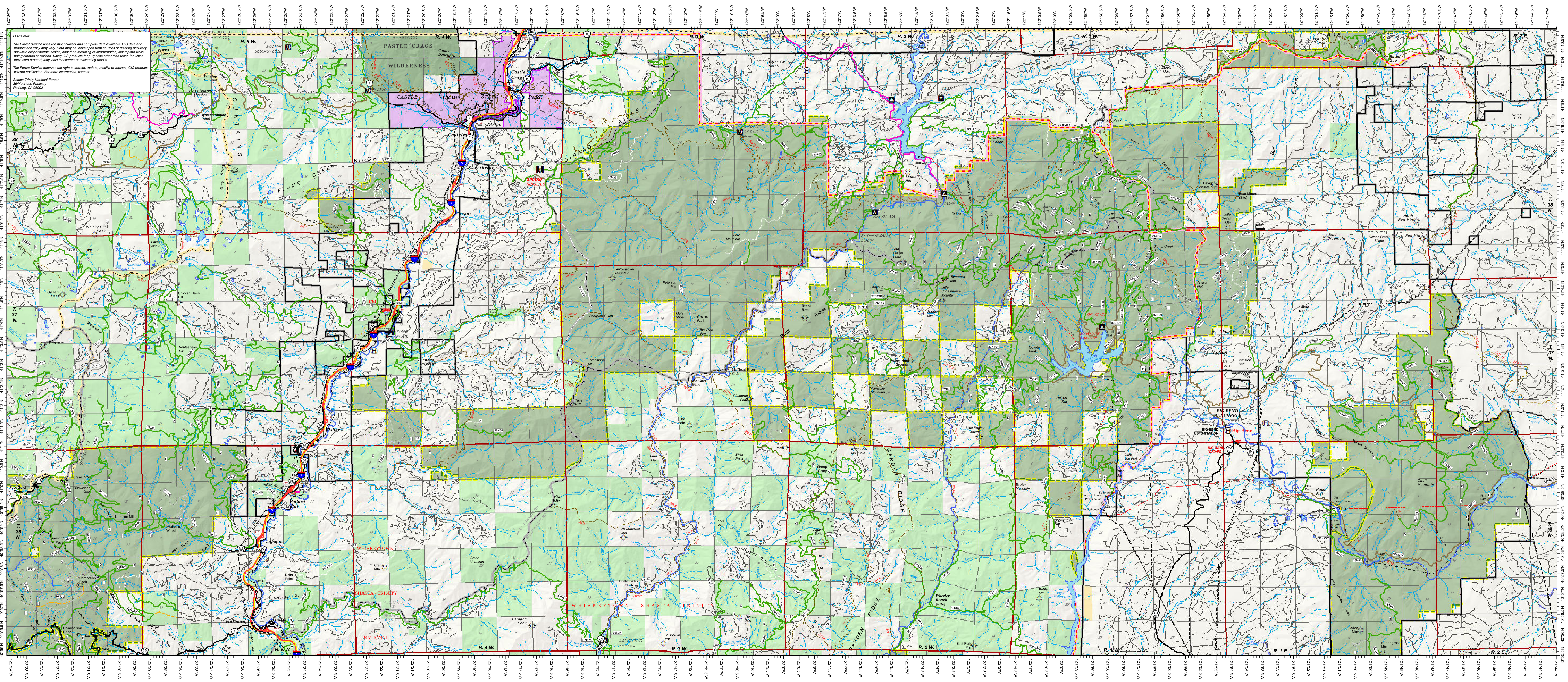
- CALIFORNIA STATE LAND

### USFS RANGER STATION

- USFS RANGER STATION

### HYDRO

- SPRINGS
- LAKE/POND
- RESERVOIR
- SWAMP/MARSH



**Disclaimer:**  
The Forest Service uses the most current and complete data available. GIS data and product accuracy may vary. Data may be developed from sources of differing accuracy, accuracy only at certain scales, based on modeling or interpretation, incomplete while being created or revised. Using GIS products for purposes other than those for which they were created may yield inaccurate or misleading results.  
The Forest Service reserves the right to correct, update, modify, or replace GIS products without notification. For more information, contact:  
Shasta-Trinity National Forest  
3644 Antioch Parkway  
Redding, CA 96002