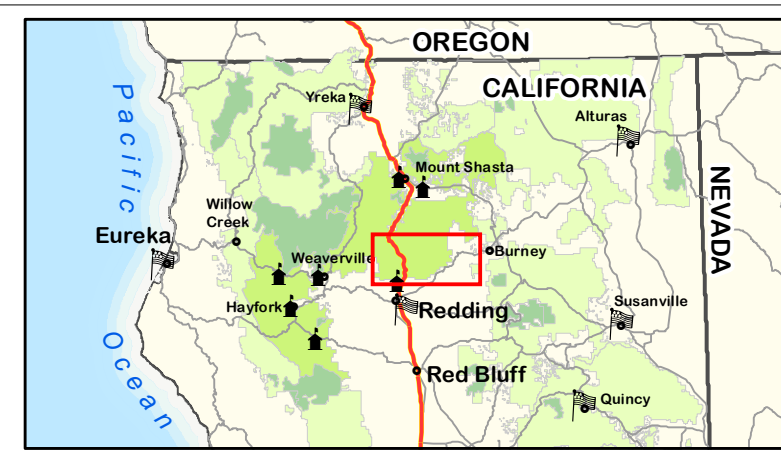
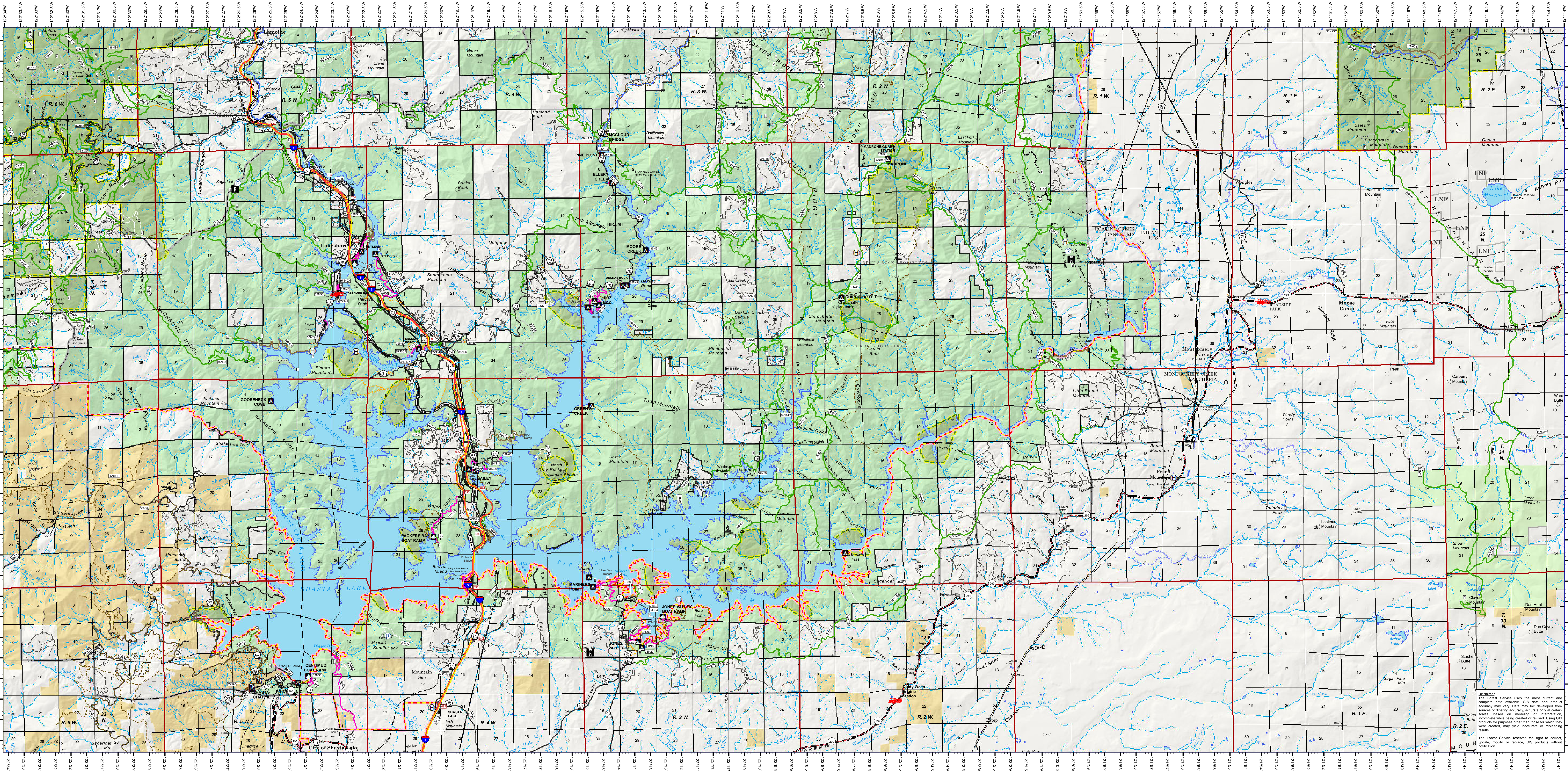


# FIRE TRANSPORTATION SHASTA LAKE SOUTH



Last Updated July 2nd 2015 by CP  
(SHASTA-TRINITY NATIONAL FOREST SO)  
DOCUMENT FILED IN THE FOLLOWING LOCATION:  
T:\FSW\Shasta-Trinity\Programs\CP\MapGraphics  
GHS - Transportation

<b>FIRE SUPPRESSION INFORMATION</b> <ul style="list-style-type: none"> <li> FIRE STATION</li> <li> HELISPOT</li> <li> AIRPORT</li> <li> DIRECT PROTECTION AREA</li> <li> LOOKOUT</li> <li> WATER</li> <li> REPEATER</li> </ul>	<b>TRANSPORTATION - ROADS</b> <ul style="list-style-type: none"> <li> INTERSTATE HIGHWAY</li> <li> STATE HIGHWAY</li> <li> LEVEL 1 (CLOSED ROAD)</li> <li> LEVEL 2 (OPEN TO ALL VEHICLES)</li> <li> LEVEL 3 (OPEN TO HIGHWAY LEGAL VEHICLES)</li> <li> LEVEL 4 (MODERATE DEGREE OF COMFORT)</li> <li> ADMIN ONLY</li> <li> DECOMMISSIONED</li> <li> OTHER PUBLIC</li> <li> PRIVATE</li> <li> UNAUTHORIZED ROUTES</li> <li> PERMIT REQUIRED</li> <li> STATUS UNKNOWN</li> </ul>	<b>TRANSPORTATION - TRAILS</b> <ul style="list-style-type: none"> <li> NATIONAL FOREST SYSTEM TRAIL</li> <li> OTHER FEDERAL OR STATE TRAIL</li> <li> PACIFIC CREST TRAIL</li> <li> UNAUTHORIZED TRAIL</li> <li> DECOMMISSIONED TRAIL</li> </ul>	<b>LAND DESIGNATIONS</b> <ul style="list-style-type: none"> <li> SHASTA-TRINITY NATIONAL FOREST</li> <li> NON-FOREST SERVICE WITHIN FOREST BOUNDARY</li> <li> TOWNSHIP AND RANGE</li> <li> SECTIONS</li> <li> NATIONAL PARK SERVICE</li> <li> RANGER DISTRICT BOUNDARY</li> <li> COUNTY BOUNDARY</li> <li> BUREAU OF LAND MANAGEMENT</li> <li> OTHER NATIONAL FORESTS</li> </ul>	<b>LAND ALLOCATIONS</b> <ul style="list-style-type: none"> <li> LATE SUCCESSIONAL RESERVE</li> <li> DEVELOPED RECREATION POINTS</li> <li> BOATING SITE</li> <li> CAMPGROUND</li> <li> PICNIC SITE</li> <li> TRAILHEAD</li> </ul>	<b>WATER FEATURES</b> <ul style="list-style-type: none"> <li> INTERMITTENT STREAM</li> <li> PERENNIAL STREAM OR RIVER</li> <li> CANAL DITCH</li> <li> CONNECTOR</li> <li> PIPELINE/AQUEDUCT</li> <li> PIPELINE/AQUEDUCT UNDERGROUND</li> <li> PIPELINE PENSTOCK OR SIPHON</li> <li> LAKE/POND</li> <li> RESERVOIR</li> <li> SWAMP/MARSH</li> <li> SPRINGS</li> </ul>	<b>MISCELLANEOUS</b> <ul style="list-style-type: none"> <li> UNDERGROUND PIPELINE</li> <li> TRANSMISSION LINES</li> <li> RAILROAD</li> <li> USFS RANGER STATION</li> <li> SUMMITS</li> <li> CAVE/MINNE TUNNEL ENTRANCE/ADIT</li> <li> CEMETERY OR GRAVE</li> <li> LOCATED OR LANDMARK OBJECT</li> <li> MINE SHAFT</li> <li> PIT</li> <li> POWER SUBSTATION</li> <li> PROSPECT</li> <li> QUARRY OR OPEN PIT MINE</li> <li> TANKS/TOWER - SMALL</li> <li> WINDMILL OR WIND GENERATOR</li> </ul>
---	---	--	---	---	---	--



UTM GRID AND 2014 MAGNETIC NORTH  
DECLINATION AT CENTER OF SHEET

0°33' 14'26" N  
10 MILS  
257 MILS

The Forest Service uses the most current and complete data available. GIS data and product accuracy may vary. Data may be developed from sources of differing accuracy, accurate only at certain scales, based on modeling or interpretation, incomplete while being created or revised. Using GIS products for purposes other than those for which they were created, may yield inaccurate or misleading results.

The Forest Service reserves the right to correct, update, modify, or replace GIS products without notification.