

FIRE TRANSPORTATION- MOUNT SHASTA NORTH



FIRE SUPPRESSION INFORMATION

	FIRE STATIONS		LOOKOUT
	AIRPORT		WATER
	HELISPOT		DIRECT PROTECTION AREA
	REPEATER		

TRANSPORTATION - ROADS

- INTERSTATE HIGHWAY
- STATE HIGHWAY
- US HIGHWAY
- LEVEL 1 (CLOSED ROAD)
- LEVEL 2 (OPEN TO ALL VEHICLES)
- LEVEL 3 (OPEN TO HIGHWAY LEGAL VEHICLES)
- LEVEL 4 (MODERATE DEGREE OF COMFORT)
- ADMIN ONLY
- DECOMMISSIONED
- OTHER PUBLIC
- PRIVATE
- UNAUTHORIZED ROUTES
- PERMIT REQUIRED
- CONVERTED TO MOTORIZED TRAIL
- STATUS UNKNOWN

TRANSPORTATION - TRAILS

- NATIONAL FOREST SYSTEM TRAIL
- OTHER FEDERAL OR STATE TRAIL, PACIFIC CREST TRAIL
- UNAUTHORIZED TRAIL
- DECOMMISSIONED TRAIL

LAND DESIGNATIONS

- SHASTA-TRINITY NATIONAL FOREST
- NON-FOREST SERVICE WITHIN FOREST BOUNDARY
- TOWNSHIP AND RANGE
- SECTIONS
- NATIONAL PARK SERVICE
- RANGER DISTRICT BOUNDARY
- COUNTY BOUNDARY
- CALIFORNIA STATE LAND
- BUREAU OF LAND MANAGEMENT
- OTHER NATIONAL FORESTS

LAND ALLOCATIONS

- LATE SUCCESSIONAL RESERVE
- WILDERNESS

WATER FEATURES

- SPRINGS
- LAKE/POND
- RESERVOIR
- PLAYA
- ICE MASS
- SWAMP/MARSH
- INTERMITTENT STREAM
- PERENNIAL STREAM OR RIVER
- CANAL DITCH
- CONNECTOR
- PIPELINE/AQUEDUCT
- PIPELINE/AQUEDUCT UNDERGROUND

RECREATION

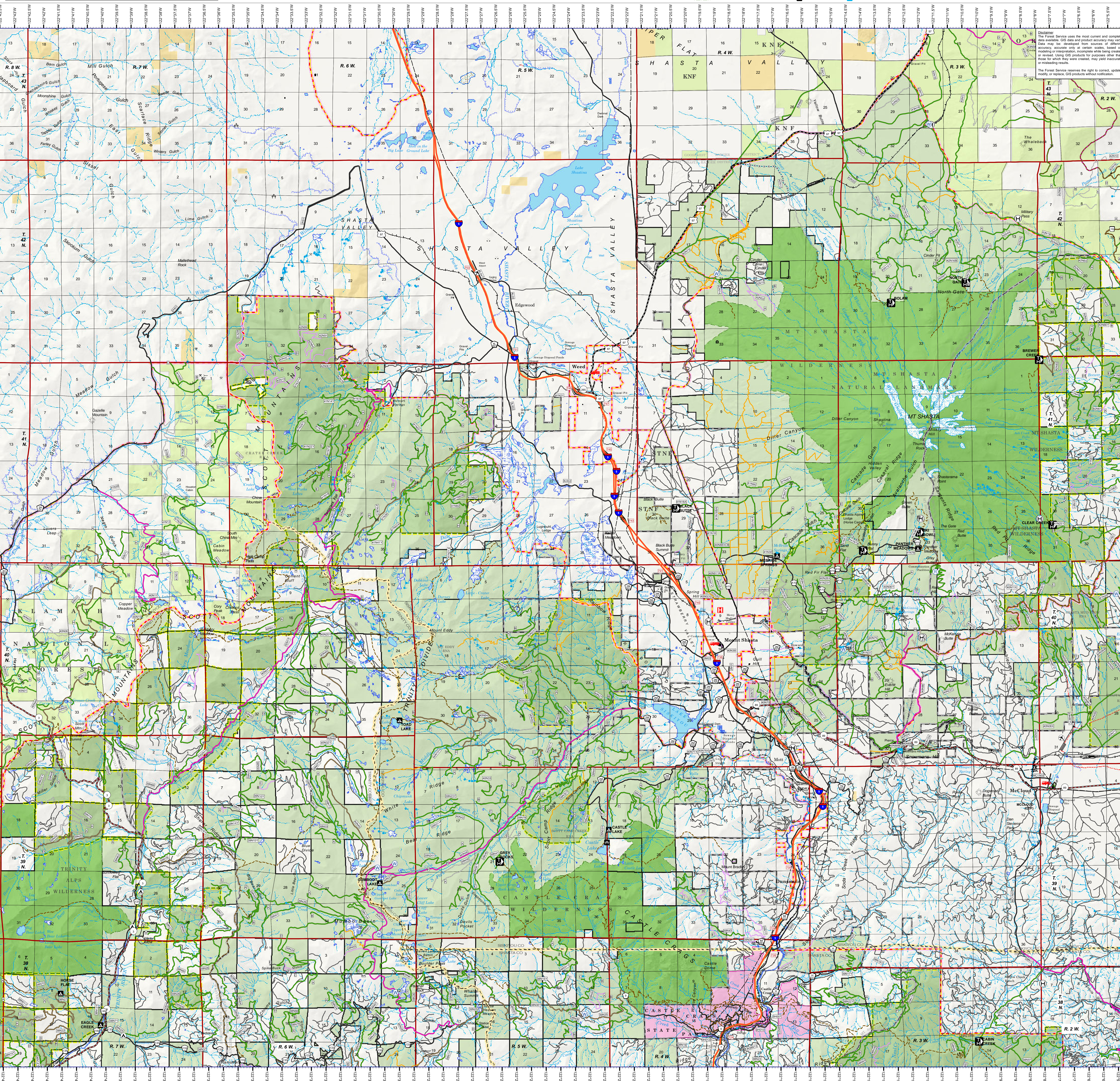
- CAMPGROUND
- PICNIC SITE
- TRAILHEAD
- SNOWPARK

MISCELLANEOUS

- HOSPITAL
- USFS RANGER STATION
- UNDERGROUND PIPELINE
- TRANSMISSION LINE
- RAILROAD
- CAVE/MINE TUNNEL ENTRANCE/ADIT
- CEMETERY OR GRAVE
- CORRAL
- LOCATED OR LANDMARK OBJECT
- MINE SHAFT
- PIT
- POWER SUBSTATION
- PROSPECT
- QUARRY OR OPEN PIT MINE
- TANKS/TOWER - LARGE
- TANKS/TOWER - SMALL
- WELL/DRIILL HOLE - EXCLUDE WATER
- LOCATED OR LANDMARK OBJECT
- WINDMILL OR WIND GENERATOR

UTM GRID AND 2014 MAGNETIC NORTH DECLINATION AT CENTER OF SHEET

Scale: 1:250,000



Last Updated July 22nd 2015 BY CP (SHASTA-TRINITY NATIONAL FOREST SO)

DOCUMENT FILED IN THE FOLLOWING LOCATION:
T:\S\NF\S\ShastaTrinityProgram\5100FinalMgmtGIS\SPF_Transportation

Disclaimer: The Forest Service uses the most current and complete data available. GIS data and product accuracy may vary. Data may be developed from sources of differing accuracy, accurate only at certain scales, based on the modeling or interpretation techniques being employed or revised. Using GIS products for purposes other than those for which they were created, may yield inaccurate or misleading results.

The Forest Service reserves the right to correct, update, modify, or replace GIS products without notification.