

# FIRE TRANSPORTATION- MOUNT SHASTA SOUTH



### FIRE SUPPRESSION INFORMATION

	FIRE STATIONS		LOOKOUT
	AIRPORT		WATER
	HELISPOT		REPEATER
	DIRECT PROTECTION AREA		

### TRANSPORTATION - ROADS

	INTERSTATE HIGHWAY		DECOMMISSIONED
	STATE HIGHWAY		OTHER PUBLIC
	LEVEL 1 (CLOSED ROAD)		PRIVATE
	LEVEL 2 (OPEN TO ALL VEHICLES)		UNAUTHORIZED ROUTES
	LEVEL 3 (OPEN TO HIGHWAY LEGAL VEHICLES)		PERMIT REQUIRED
	LEVEL 4 (MODERATE DEGREE OF COMFORT)		CONVERTED TO MOTORIZED TRAIL
	ADMIN ONLY		STATUS UNKNOWN

### TRANSPORTATION - TRAILS

	NATIONAL FOREST SYSTEM TRAIL		UNAUTHORIZED TRAIL
	OTHER FEDERAL OR STATE TRAIL		DECOMMISSIONED TRAIL
	PACIFIC CREST TRAIL		

### LAND DESIGNATIONS

	SHASTA-TRINITY NATIONAL FOREST
	NON-FOREST SERVICE WITHIN FOREST BOUNDARY
	TOWNSHIP AND RANGE
	SECTIONS
	NATIONAL PARK SERVICE
	RANGER DISTRICT BOUNDARY
	COUNTY BOUNDARY
	California State Land
	BUREAU OF LAND MANAGEMENT
	OTHER NATIONAL FORESTS

### LAND ALLOCATIONS

	LATE SUCCESSIONAL RESERVE
	WILDERNESS

### RECREATION

	BOATING SITE
	CAMPGROUND
	INFO SITE/FEE STATION
	PICNIC SITE
	TRAILHEAD

### WATER FEATURES

	SPRINGS
	LAKE/POND
	RESERVOIR
	PLAYA
	SWAMP/MARSH
	INTERMITTENT STREAM
	PERENNIAL STREAM OR RIVER
	CONNECTOR
	PIPELINE/AQUEDUCT

### MISCELLANEOUS

	USFS RANGER STATION
	UNDERGROUND PIPELINE
	TRANSMISSION LINE
	RAILROAD
	CAVE/MINE TUNNEL ENTRANCE/ADIT
	CEMETERY OR GRAVE
	LOCATED OR LANDMARK OBJECT
	MINE SHAFT
	PIT
	POWER SUBSTATION
	PROSPECT
	QUARRY OR OPEN PIT MINE
	TANKS/TOWER - SMALL

UTM GRID AND 2014 MAGNETIC NORTH DECLINATION AT CENTER OF SHEET

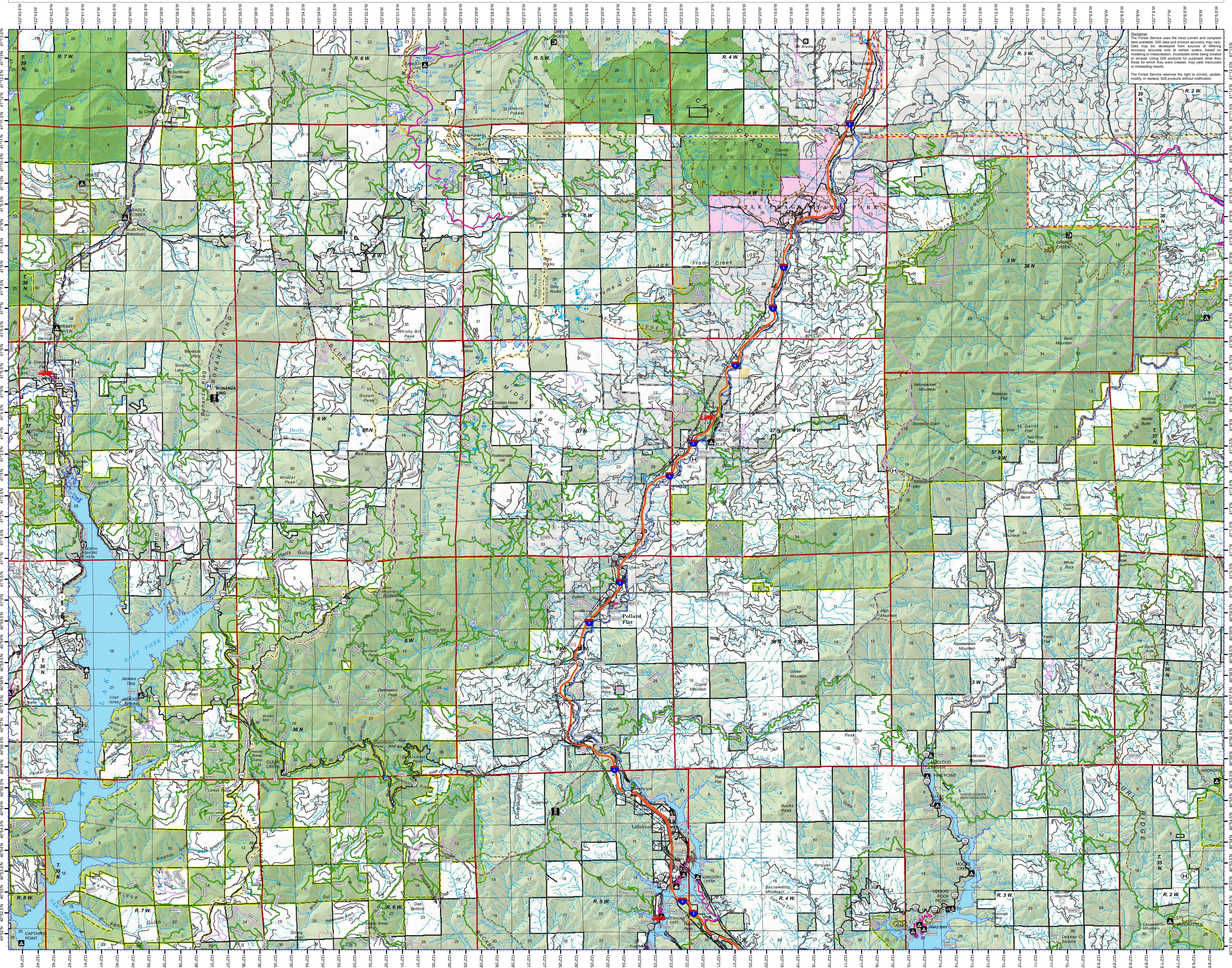
14°32' 268 MILS

0°23' 7 MILS

GN MN

DOCUMENT FILED IN THE FOLLOWING LOCATION:  
T:\FRP\Shasta\MapProgram\03\Map\GIS\USF\_Transportation

Last Updated July 22nd 2015 BY GP (SHASTA-TRINITY NATIONAL FOREST SO)



Disclaimer: The Forest Service uses the most current and complete data available. GIS data and product accuracy may vary. Data may be developed from sources of differing accuracy, accurate only at certain scales, based on modeling or interpretation, incomplete while being created or revised. Using GIS products for purposes other than those for which they were created, may yield inaccurate or misleading results. The Forest Service reserves the right to correct, update, modify or replace GIS products without notification.