

# FIRE TRANSPORTATION

## McCLOUD NORTH

Prepared 7 July 2015 by T. Pitt (Shasta-Trinity National Forest SO)  
This map is located at: [TFS\SHP\ShastaTrinity](#)  
Program: S100FireMapGIS\SHP\_Transportation



### FIRE SUPPRESSION INFORMATION

LOOKOUTS	WATER SOURCES	DIRECT PROTECTION AREA
LOOKOUT	WATER	DIRECT PROTECTION AREA
LOOKOUT CABIN	MISCELLANEOUS	FIRE STATIONS
LOOKOUT UNUSABLE	AIRPORT	
	HELISPOT	

### MISCELLANEOUS

CAVE	HOSPITAL
ENTRANCE	REPEATER
LOCATED OR LANDMARK OBJECT	MOUNTAIN PEAK
POWER SUBSTATION	UNDERGROUND PIPELINE
BOUNDARY OR OPEN PIT LINE	TRANSMISSION LINE
TANK TOWER - LARGE	USFS RANGER STATION
TANK TOWER - SMALL	
WELL/DRILL HOLE - EXCLUDE WATER	

### LAND DESIGNATIONS

SHASTA-TRINITY NATIONAL FOREST	NON-Forest SERVICE WITHIN FOREST BOUNDARY
RANGER DISTRICT BOUNDARY	OTHER NATIONAL FOREST
LAND RANGE	SECTION
COUNTY BOUNDARY	BUREAU OF LAND MANAGEMENT

### DEVELOPED RECREATION POINTS

LATE SUCCESSIONAL RESERVE	SKI PARK
VIEWPOINT	TRAILHEAD
CAMPGROUND	GROUP CAMPGROUND
PICNIC SITE	VISTA SITE

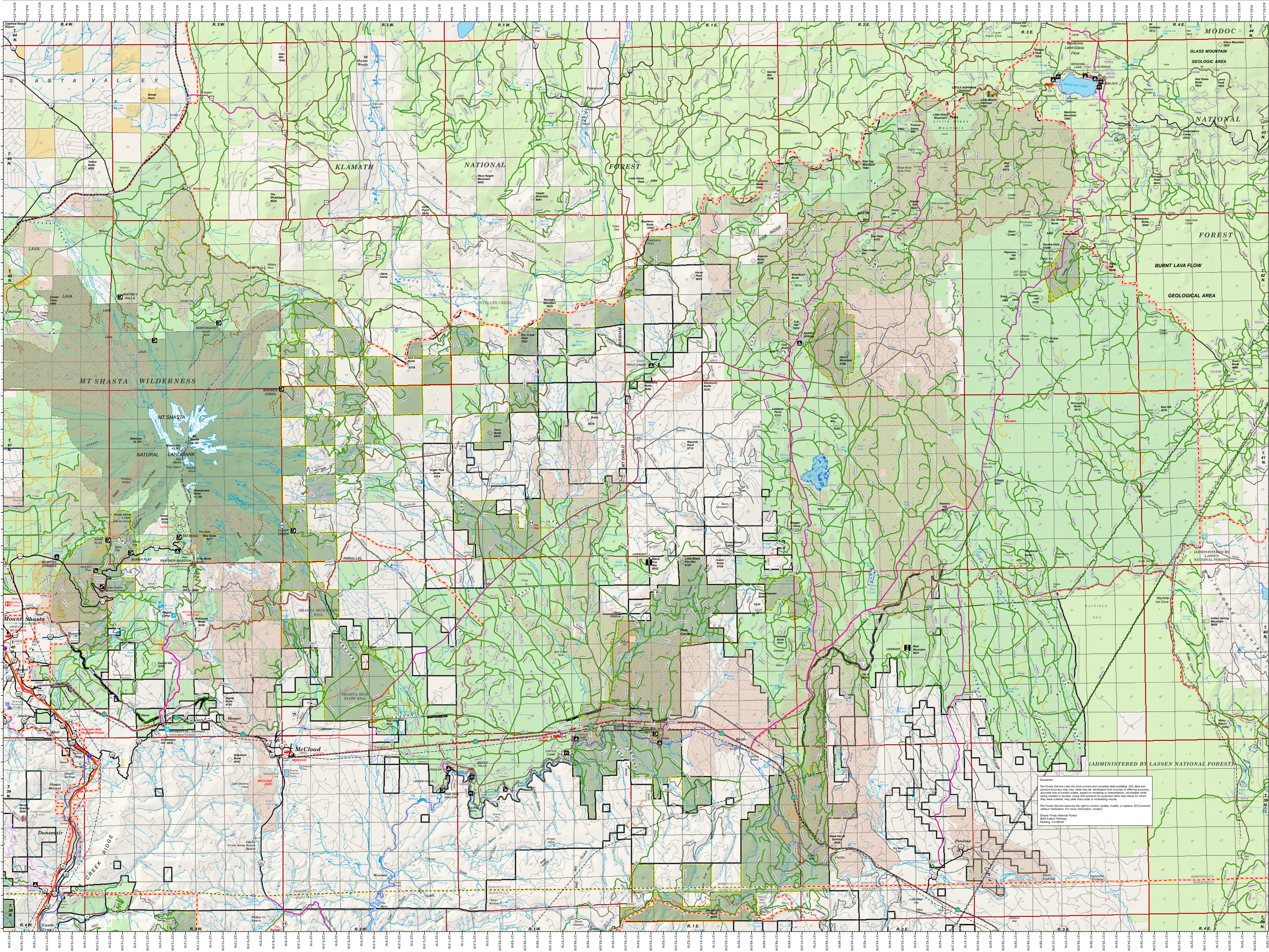
### TRANSPORTATION - ROADS

ADMIN ONLY	INTERSTATE HIGHWAY
OTHER PUBLIC	STATE HIGHWAY
PRIVATE	US HIGHWAY
UNAUTHORIZED ROUTES	LEVEL 1 (MODERATE DEGREE OF COMFORT)
PERMIT REQUIRED	LEVEL 2 (OPEN TO HIGHWAY LEGAL VEHICLES)
CONVERTED TO MOTORIZED TRAIL	LEVEL 3 (OPEN TO ALL VEHICLES)
STATUS UNKNOWN	LEVEL 4 (CLOSED)

### TRANSPORTATION - TRAILS

NATIONAL FOREST SYSTEM TRAIL	SPRING
OTHER FEDERAL OR STATE TRAIL	LAKE/RESERVOIR
PACIFIC CREST TRAIL	PLAYA
UNAUTHORIZED TRAIL	ICE MASS
HYDRO	SWAMP/MARSH
INTERMITTENT STREAM	
PERENNIAL STREAM OR RIVER	
CANAL/DITCH	
PIPELINE/AQUEDUCT	
PIPELINE/AQUEDUCT UNDERGROUND	

UTM 48Q UTM 48Q 2015 MAGNETIC NORTH  
OCCLUSION AT CENTER OF SHEET



Disclaimer:  
The Forest Service uses the most current and complete data available. GIS data and/or products may vary from the data used to create the GIS products. The Forest Service does not warrant the accuracy, completeness, or timeliness of the data or products. The Forest Service reserves the right to correct, update, modify, or replace GIS products without notification. For more information, contact:  
Shasta-Trinity National Forest  
3644 Arroyo Parkway  
Redding, CA 96001