

FIRE TRANSPORTATION

McCLOUD SOUTH

Prepared 8 July 2015 by T. Platt (Shasta-Trinity National Forest SO)
 This map is filed in TFSNWS/SHASTA/Trinity
 Program\GIS\FireMgmt\GIS\SHF_Transportation



FIRE SUPPRESSION INFORMATION

LOOKOUTS

- LOOKOUT
- LOOKOUT/CABIN
- LOOKOUT, UNUSABLE

WATER SOURCES

- WATER

MISCELLANEOUS

- AIRPORT
- HELIPORT
- DIRECT PROTECTION AREA
- FIRE STATIONS

MISCELLANEOUS

- CAVE/MINE TUNNEL ENTRANCE/ADIT
- CEMETERY OR GRAVE
- LOCATED OR LANDMARK OBJECT
- PIT
- POWER SUBSTATION
- QUARRY OR OPEN PIT MINE
- TANKS/TOWER - LARGE
- TANKS/TOWER - SMALL

HOSPITAL

- HOSPITAL
- REPEATER
- MOUNTAIN PEAK
- UNDERGROUND PIPELINE
- TRANSMISSION LINE
- USFS RANGER STATION

LAND DESIGNATIONS

- SHASTA-TRINITY NATIONAL FOREST
- NON-FOREST SERVICE WITHIN FOREST BOUNDARY
- RANGER DISTRICT BOUNDARY
- OTHER NATIONAL FORESTS
- TOWNSHIP AND RANGE
- SECTIONS
- COUNTY BOUNDARY
- BUREAU OF LAND MANAGEMENT
- LATE SUCCESSIONAL RESERVE

WILDERNESS

- WILDERNESS

DEVELOPED RECREATION POINTS

- CAMPGROUND
- GROUP CAMPGROUND
- PICNIC SITE
- SKI PARK
- SNOW PARK
- TRAILHEAD
- VISTA SITE

TRANSPORTATION - ROADS

- INTERSTATE HIGHWAY
- INTERSTATE HIGHWAY RAMP
- STATE HIGHWAY
- LEVEL 4 (MODERATE DEGREE OF COMFORT)
- LEVEL 3 (OPEN TO HIGHWAY LEGAL VEHICLES)
- LEVEL 2 (OPEN TO ALL VEHICLES)
- LEVEL 1 (CLOSED)

ADMIN ONLY

- DECOMMISSIONED
- OTHER PUBLIC
- PRIVATE
- UNAUTHORIZED ROUTES
- PERMIT REQUIRED
- STATUS UNKNOWN
- SNOW PARK
- TRAILHEAD
- VISTA SITE

TRANSPORTATION - TRAILS

- NATIONAL FOREST SYSTEM TRAIL
- OTHER FEDERAL OR STATE TRAIL
- PACIFIC CREST TRAIL
- UNAUTHORIZED TRAIL

HYDRO

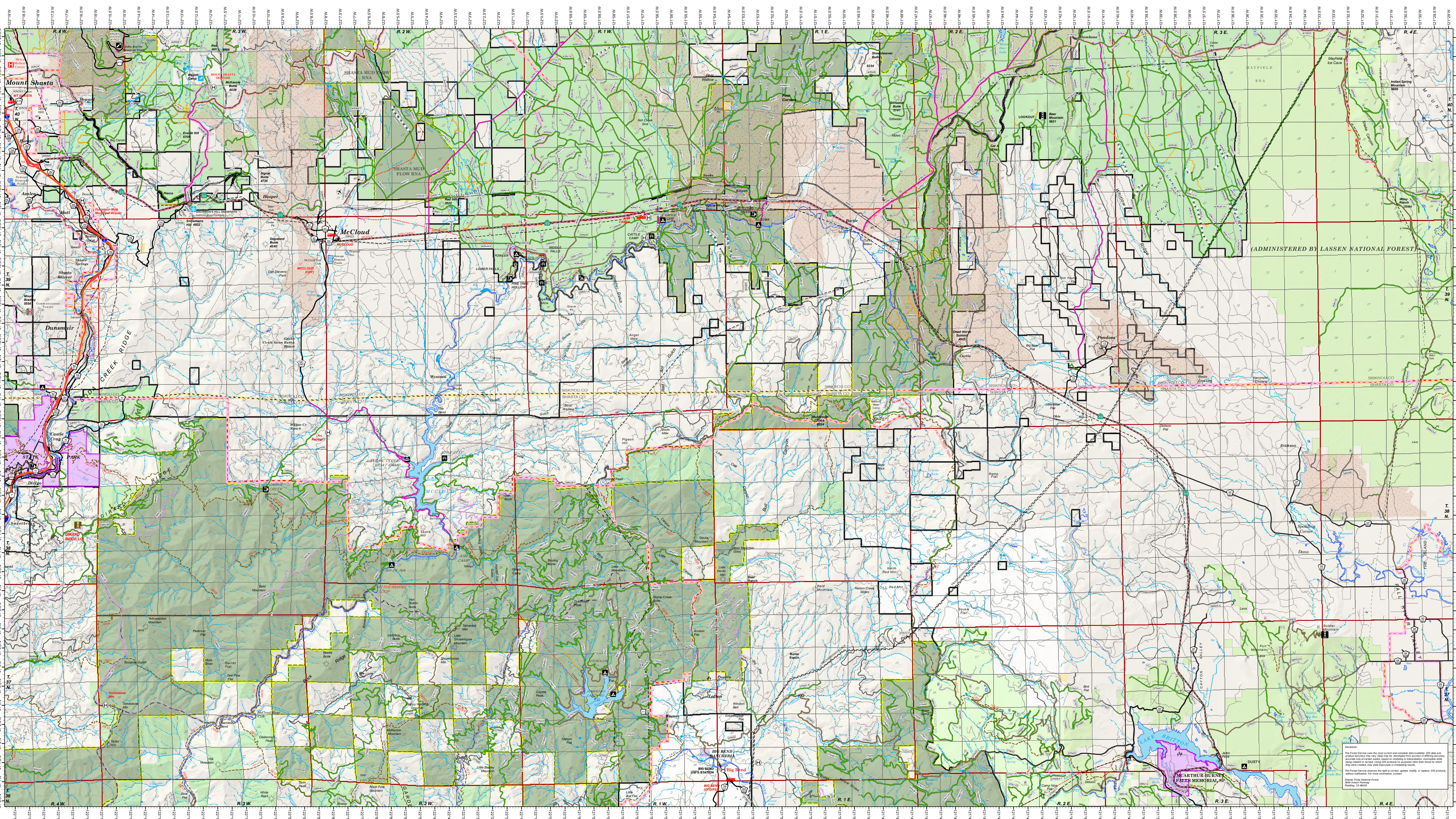
- INTERMITTENT STREAM
- PERENNIAL STREAM OR RIVER
- CANAL DITCH
- CONNECTOR
- AQUEDUCT
- PIPELINE/AQUEDUCT UNDERGROUND
- PIPELINE PENSTOCK OR SIPHON

- SPRINGS
- LAKE/POND
- RESERVOIR
- PLAYA
- SWAMP/MARSH



UTM GRID AND 2014 MAGNETIC NORTH
 OCCUPATION AT CENTER OF SHEET

14738
 267 MILES



(ADMINISTERED BY LASSEN NATIONAL FOREST)

Disclaimer:
 The Forest Service uses the most current and complete data available. GIS data and printed products may not be consistent. Users should verify the accuracy of the information before using it for any purpose. The Forest Service reserves the right to correct, update, modify or replace GIS products without notice. For more information, contact:
 Shasta-Trinity National Forest
 Fire Management Division
 10000 Siskiyou Blvd
 Red Bluff, CA 96080