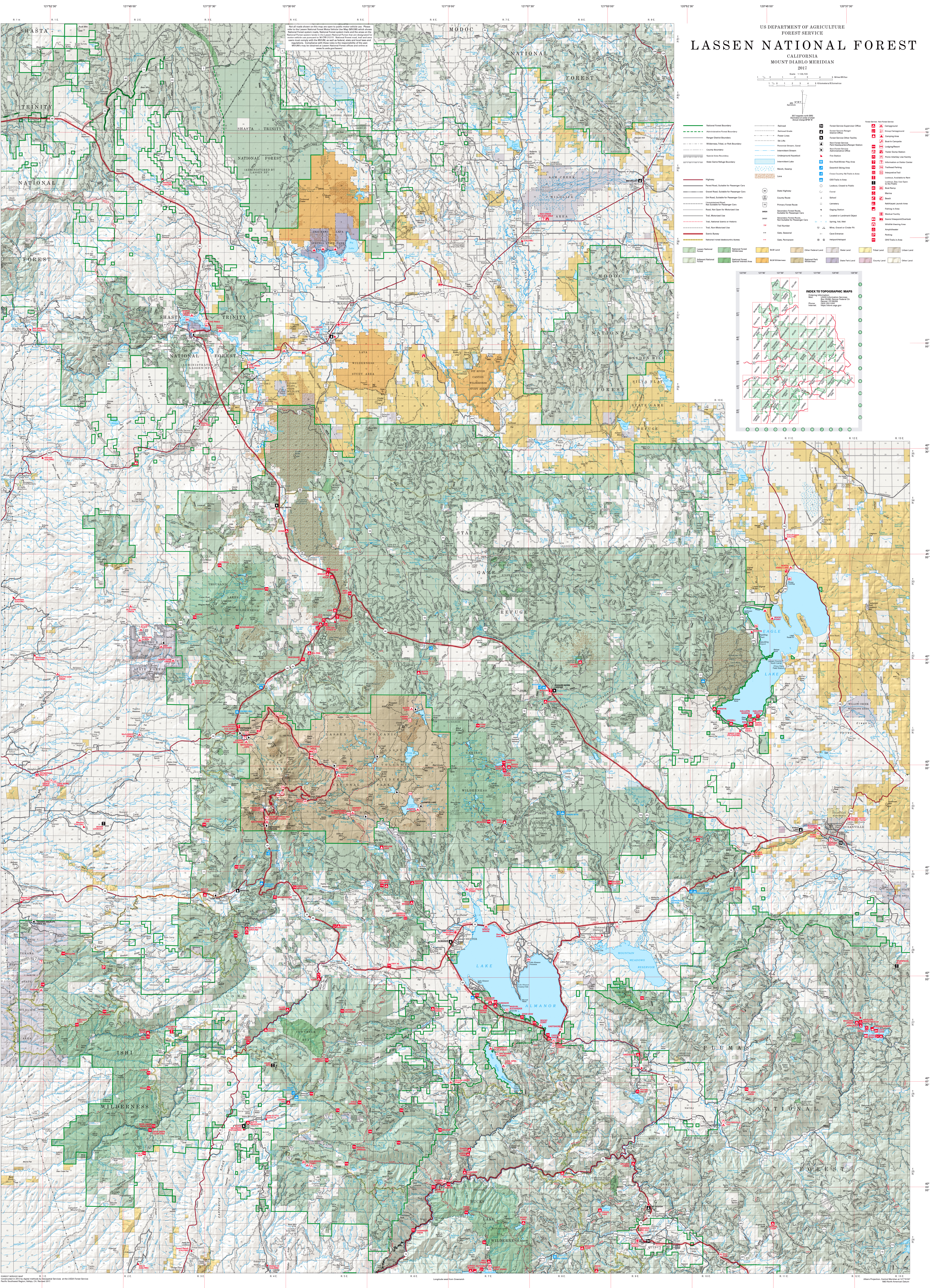


US DEPARTMENT OF AGRICULTURE
FOREST SERVICE
LASSEN NATIONAL FOREST
CALIFORNIA
MOUNT DIABLO MERIDIAN
2017



Map of roads shown on this map are open to public motor vehicle use. Please refer to the Lassen National Forest Management Plan for more information on National Forest system roads. National Forest system roads and the area around them are shown on this map. National Forest system roads are shown on this map. National Forest system roads are shown on this map. National Forest system roads are shown on this map.

Scale 1:62,500
1 2 3 4 5 6 Kilometers

- | | | | | | |
|--|--|--|--------------------|--|------------------------------|
| | National Forest Boundary | | Road | | Campground |
| | Administrative Boundaries | | Power Lines | | Fire Station |
| | Ranger District Boundary | | Pipeline | | Oil Well |
| | Wilderness Study Area Boundary | | Irrigation Canal | | Public Storage Facility |
| | County Boundary | | Waterbody Aqueduct | | Recreation or Visitor Center |
| | State Game Refuge Boundary | | Wetland | | Interpretive Trail |
| | Highway | | Lake | | Lookout Tower or Beacon |
| | Forest Road, Suitable for Passenger Cars | | Dam | | Lodge |
| | Forest Road, Suitable for Passenger Cars | | Dam | | Motel |
| | Road, Suitable for Passenger Cars | | Dam | | Motel |
| | Road, Not Open for Motorized Use | | Dam | | Motel |
| | Trail, Motorist Use or Historic | | Dam | | Motel |
| | Road, Not Open for Motorized Use | | Dam | | Motel |
| | National Forest Boundary | | Dam | | Motel |
| | National Forest Boundary | | Dam | | Motel |

