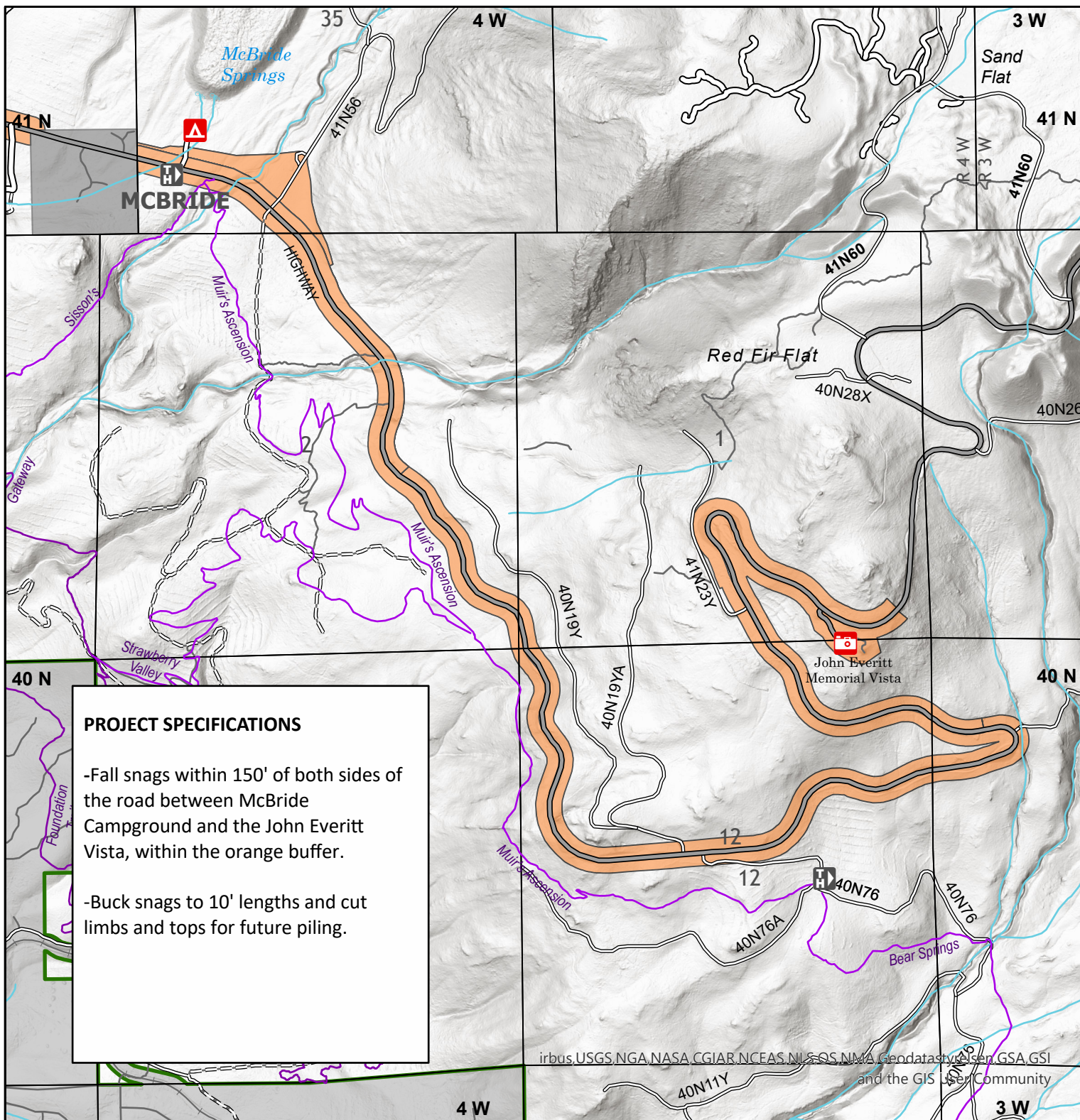




Shasta Trinity National Forest

Shasta McCloud Management Unit

Everitt Fuel Break Snagging Project 2024

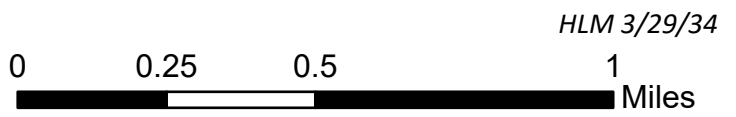


PROJECT SPECIFICATIONS

- Fall snags within 150' of both sides of the road between McBride Campground and the John Everitt Vista, within the orange buffer.
- Buck snags to 10' lengths and cut limbs and tops for future piling.

irbus.USGS.NGA.NASA.CGIAR.NCEAS.NL.S.GS.NMA.Geodatasource.GSA.GSI and the GIS User Community

- Everitt Fuel Break - Snag
- Gateway Trails
- Gateway Phase1 trails
- Non Forest Service Land



HLM 3/29/34