

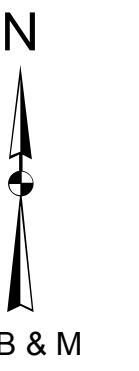
R. 2 E.

R. 3 E.

T. 41 N.

T. 40 N.

Sale Area Map
Sale Name: Julia MP
National Forest: Shasta - Trinity
Ranger District: McCloud



Legend

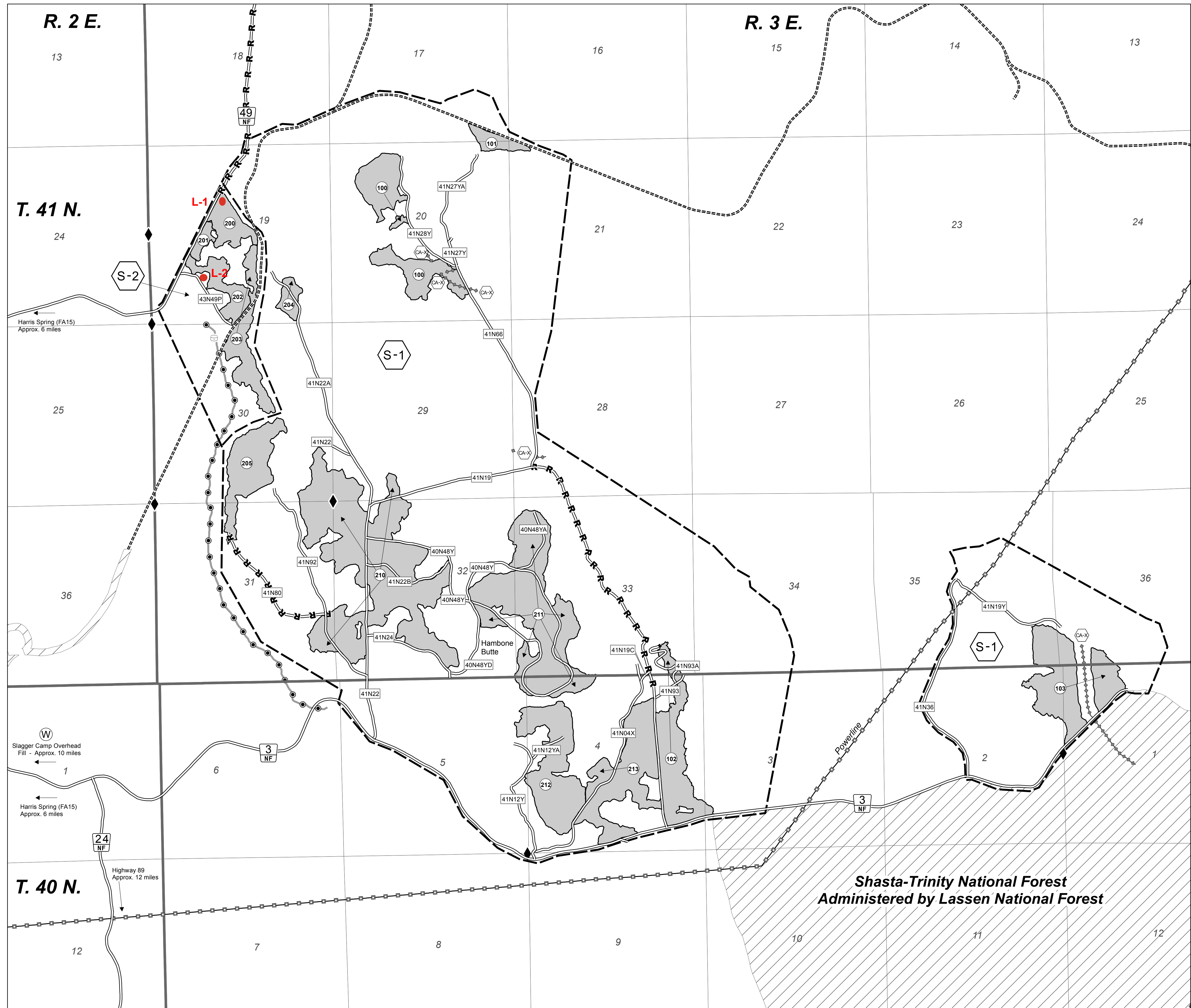
- Sale Area and Subdivision Boundary, B1.1
- Existing Transportation System, B5.12, B6.22
- Existing Road, Hauling Restricted, B5.12, C5.12#
- Road Numbers (Forest Arterial), B1.1
- Road Numbers, B1.1
- Other Ownership, B1.1
- Subdivision Unit Marked Prior to Advertisement, B1.1
- Cutting Unit Boundary and Unit Number, B2.35, C2.35#
- Individual Tree Marking Units, B2.35, C2.35#
- Designation by Spacing, C2.351#
- Felling, Bucking, Limbing, C6.41#
- Ground Based Skidding, B6.42, C6.42#
- Road Water Supply use, C5.31#, C5.35#
- Protect Improvement, Trail, B6.22
- Protection of Improvements Not Owned by FS, Power Line, B6.221
- Protect Known Survey Monument, B6.23
- Protect Improvement, Water Tank, B6.22, C6.22#
- Slash Treatments, C6.7#
- Streamcourse to be Protected, 20' buffer, B6.5, C6.5
- Site Specific Special Protection Measures, C6.24#
- Area Requiring Low Stump Heights, B6.412

Not all Cultural Resource Control Areas are Shown
No Known Noxious Weed Infestations Within Sale Area

Landlines are Approximate
 C7.22, Emergency Precaution, RAWS Station: Ash Creek - PAL AREA 2
 0 0.25 0.5 1 Miles

Drafted by: A. Dombrowski Date: December 9, 2021

CONTRACT REQUIREMENTS	ROAD, UNIT, OR SUBDIVISION
ITM	All Units
DxSPA	All Units
WHOLE, TS, TRAC, SUSP, SPACE, DF, ENDL	All Units
	Slagger Camp Overhead Fill - T. 41 N., R. 2 E., Section 30
MACH, DECK	All Landings
LSH	6" Stumps - Powder Hill Road (FA 49) 150 ft.



Shasta-Trinity National Forest
Administered by Lassen National Forest