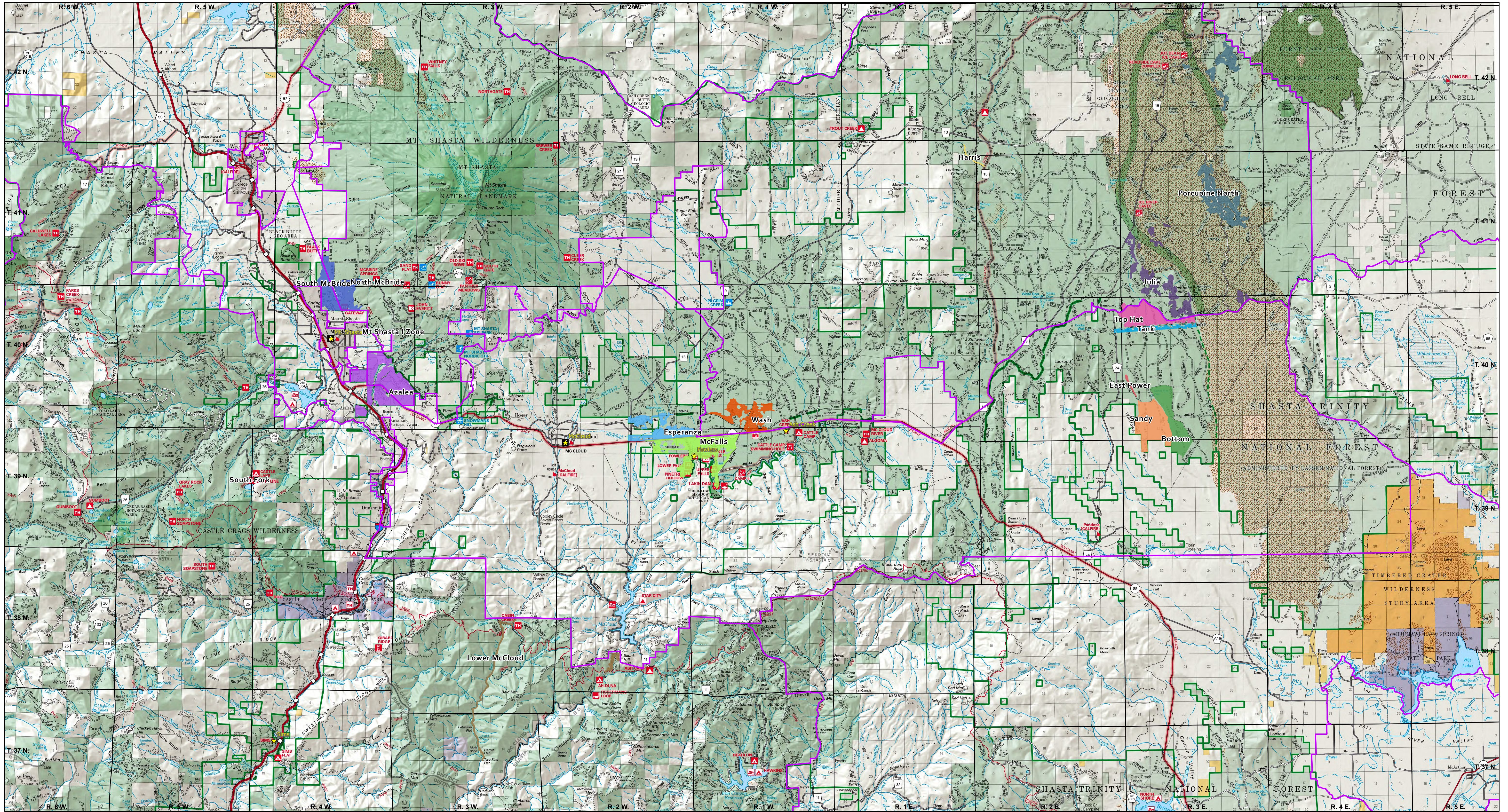
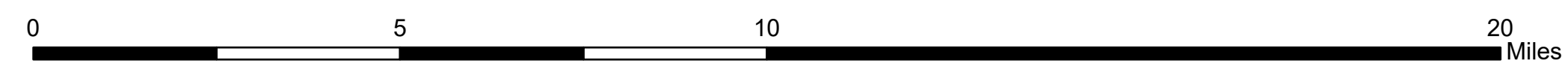




SHASTA-MC CLOUD MANAGEMENT UNIT FUELS MANAGEMENT PILE BURNING FY 2025



September 30, 2024 HLM



- | | | | | | | | | | |
|-------------------------|--------|------------|--------|---------------|------------------|-----------------|---------------|---------|------|
| Direct Protection Areas | Azalea | East Power | Harris | Lower McCloud | Mt Shasta I Zone | Porcupine North | South Fork | Tank | Wash |
| Administrative Sites | Bottom | Esperanza | Julia | McFalls | North McBride | Sandy | South McBride | Top Hat | |