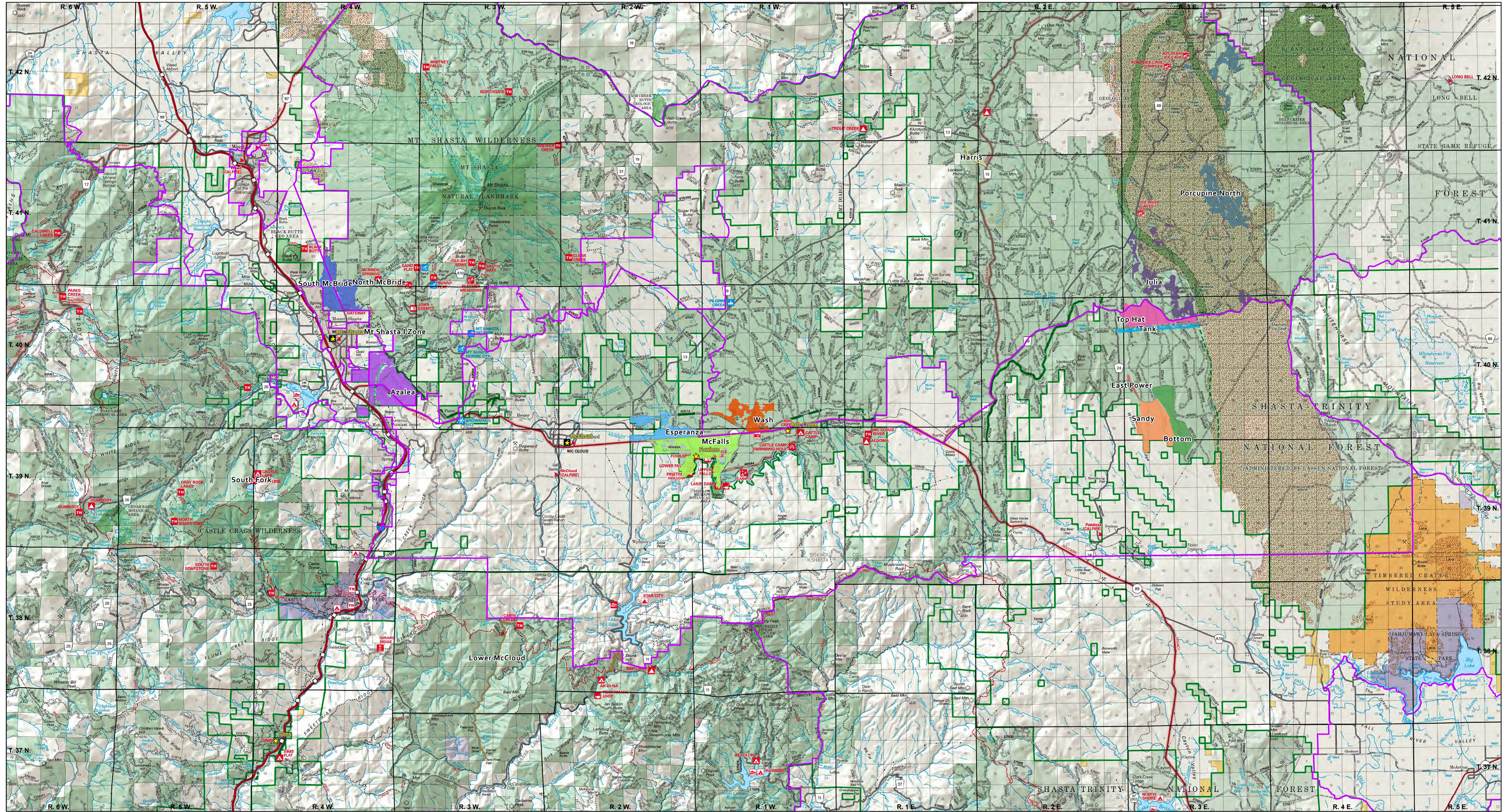
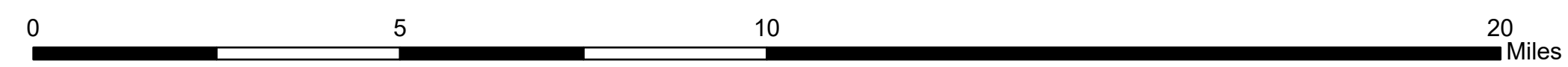




# SHASTA-MC CLOUD MANAGEMENT UNIT FUELS MANAGEMENT PILE BURNING FY 2025



September 30, 2024 HLM



- |                         |        |            |        |               |                  |                 |               |         |      |
|-------------------------|--------|------------|--------|---------------|------------------|-----------------|---------------|---------|------|
| Direct Protection Areas | Azalea | East Power | Harris | Lower McCloud | Mt Shasta I Zone | Porcupine North | South Fork    | Tank    | Wash |
| Administrative Sites    | Bottom | Esperanza  | Julia  | McFalls       | North McBride    | Sandy           | South McBride | Top Hat |      |