

Shasta-McCloud Management Unit



**FY25 McBride Underburn
Unit CD
CA-SHF-000208**

05/01-02/2025

**Job Code: 0597 WISX9722
Base and Overtime Pay**

Shasta McCloud Fuels Overtime
Tracking F/Y 2025



INCIDENT OBJECTIVES

Burn Goal & Objectives:

Apply prescribed fire to natural-, activity-, and ladder- fuels with a low to moderate intensity surface fire to restore and maintain the fuel conditions that allow for a natural fire return interval and result in conditions that would sustain a 1 to 4 foot flame length under a wildfire scenario.

Prescribed Fire Objectives	Size Class (DBH)	Acceptable Range
Duff Consumption	NA	30-50%
Litter Consumption	0-3"	40-100%
	1-3"	40-85%
	> 3"	30-70%
Conifer Mortality	< 4"	0-100 %
	< 8"	0-75%
	> 8"	< 6%
Brush and Shrub Mortality	NA	< 80%

WX Parameters:

- Dry Bulb: 35-85°
- Relative Humidity (RH): 12 - 50%
- Mid Flame Wind Speed (MFWS): 0 -10 w/gusts to 15 mph*.
- FDFM: 3 -10%
- 10 hr FM 5 -15%

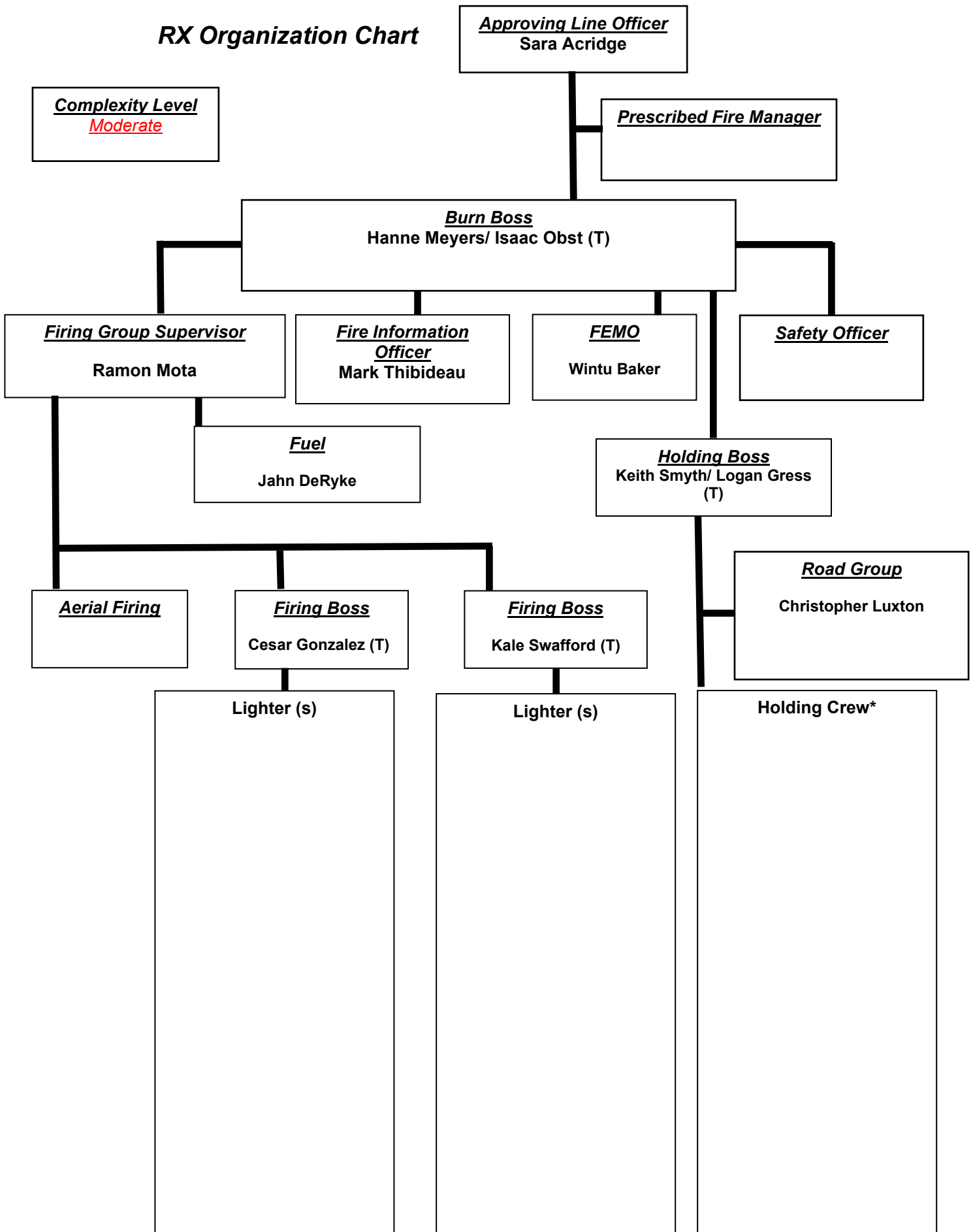


Transportation Map



McBride RX Map

RX Organization Chart



Spot Forecast

Spot Forecast for McBride Underburn...U.S. Forest Service

National Weather Service MEDFORD OR

509 AM PDT Thu May 1 2025

Forecast is based on ignition time of 0600 PDT on May 01. If conditions become unrepresentative...contact the National Weather Service.

.DISCUSSION...Strong warming and drying will peak today. A cold front approaches late Friday into Friday evening with a chance of showers and slight chance of thunderstorms. Periods of rain follow late Friday night through Saturday afternoon, with much cooler conditions this weekend. Rainfall of around 0.25 inches will be mainly late Friday night until noon Saturday. Substantial warming and drying returns early next week. A weak disturbance may bring the next chance of showers on Wednesday.

.TODAY...

Sky/weather.....Sunny (0-5 percent).

Chance of lightning.0 percent.

Max temperature.....Around 74.

Min humidity.....19 percent.

Eye level winds.....Light winds becoming south around 2 mph in the late morning and afternoon.

Wind (20 ft).....Light winds becoming south 5 to 8 mph in the late morning and afternoon.

Mixing height.....6300 ft AGL.

Transport winds.....Southeast around 8 mph.

CWR.....0 percent.

.TONIGHT...

Sky/weather.....Clear (0-10 percent).

Chance of lightning.0 percent.

Min temperature.....Around 46.

Max humidity.....70 percent.

Eye level winds.....Southeast winds around 2 mph in the evening becoming light.

Wind (20 ft).....Southeast winds around 5 mph in the evening becoming light.

Mixing height.....1200 ft AGL.

Transport winds.....Southeast around 5 mph.

CWR.....0 percent.

.FRIDAY...

Sky/weather.....Sunny (5-15 percent) then becoming mostly cloudy (55-70 percent) late. Chance of rain showers and slight chance of thunderstorms late in the afternoon and into the evening.

Chance of lightning.12 percent.

Max temperature.....Around 69.

Min humidity.....34 percent.

Eye level winds.....Light winds becoming south up to 3 mph in the afternoon into the evening.

Wind (20 ft).....Light winds becoming south 5 to 8 mph in the afternoon. Gusty and erratic winds expected near any thunderstorms late in the afternoon and in the evening.

Mixing height.....7900 ft AGL.

Transport winds.....South around 13 mph.

CWR.....10 percent.

.FORECAST DAYS 3 THROUGH 5...

.SATURDAY...

Much cooler. Rain likely and a slight chance of thunderstorms. Lows in the lower 40s. Highs in the upper 40s. Northwest winds around 6 mph.

.SUNDAY...

Partly cloudy. A 20 percent chance of rain until 8 AM. Lows in the mid 30s. Highs in the mid 50s. North winds around 12 mph.

.MONDAY...

Warmer, clear. Lows in the upper 30s. Highs in the upper 60s. North winds around 9 mph.

\$\$

Forecaster...WEYGAND

Requested by...Hanne Meyers

Type of request...PRESCRIBED

.TAG 2512231.1/MFR

.DELD 05/01/25

.FormatterVersion 2.0.0

.EMAIL hanne.meyers@usda.gov

DIVISION ASSIGNMENT LIST				1. Branch Firing		2. Division/Group McBride	
3. Incident Name McBride Underburn				4. Operational Period Date: 5/1/25 Time: 0800-1900			
5. Operations Personnel							
Burn Boss:		Hanne Meyers/Isaac Obst (T)					
Firing Group Supervisor:		Ramon Mota		Holding:		Keith Smyth/ Logan Gress (T)	
Firing Boss:		Kale Swafford (T), Cesar Gonzalez (T)		Aerial Ignition:			
6. Resources Assigned this Period							
Resource Designator		Leader		Number Persons	Trans. Needed	Drop Off PT./Time	Pick Up PT./Time
7. Control Operations:							
Utilize ignition techniques and patterns to meet Rx Fire Objectives. Hold prescribed fire within existing control lines							
8. Special Instructions							
Monitor weather and keep safety first.							
9. Division/Group Communication Summary							
Function	Channel	Name	Frequency	Function	Channel	Name	Frequency
Command	See Communications Plan			Secondary Command	See Communications Plan		
Tactical Div/Group	See Communications Plan			Medical Emergency	See Communications Plan		
Prepared by (Resource Unit Leader)		Approved by (Planning Section Chief)			Date		Time 1800

DIVISION ASSIGNMENT LIST				1. Branch HOLDING		2. Division/Group McBride	
3. Incident Name McBride Underburn				4. Operational Period Date: 5/1/25 Time: 0800-1900			
5. Operations Personnel							
Burn Boss:		Hanne Meyers/Isaac Obst (T)					
Firing Group Supervisor:		Ramon Mota		Holding:		Keith Smyth, Logan Gress (T)	
Firing Boss:		Kale Swafford (T), Cesar Gonzalez (T)		Aerial Ignition:			
6. Resources Assigned this Period							
Resource Designator		Leader		Number Persons	Trans. Needed	Drop Off PT./Time	Pick Up PT./Time
SHF-ENG 372		Moglia		5	N	Mount Shasta 0830	Mount Shasta 1900
SHF-ENG 362		Rourke		3	N	Mount Shasta 0830	Mount Shasta 1900
KNF-ENG 357		Case		5	N	Mount Shasta 0830	Mount Shasta 1900
SHF-ENG 371		McNulty		3	N	Mount Shasta 0830	Mount Shasta 1900
SHF-ENG 361		Walker		4	N	Mount Shasta 0830	Mount Shasta 1900
SKU-ENG					N	Mount Shasta 0830	Mount Shasta 1900
SHF SMOD CRW		Bogdan		12	N	Mount Shasta 0830	Mount Shasta 1900
SHF- Shasta Lake ENG		Mata		8	N	Mount Shasta 0830	Mount Shasta 1900
SHF- Dozer 29		Camara		2	N	Mount Shasta 0830	Mount Shasta 1900
WT 266		Eason			N	Mount Shasta 0830	Mount Shasta 1900
7. Control Operations:							
Utilize ignition techniques and patterns to meet Rx Fire Objectives. Hold prescribed fire within existing control lines							
8. Special Instructions							
Monitor weather and keep safety first.							
9. Division/Group Communication Summary							
Function							
Command	Channel	Name	Frequency	Function	Channel	Name	Frequency
Tactical Div/Group	See Communications Plan			Secondary Command	See Communications Plan		
Prepared by (Resource Unit Leader)	See Communications Plan			Medical Emergency	See Communications Plan		
		Approved by (Planning Section Chief)			Date		Time 1800

INCIDENT RADIO COMMUNICATIONS PLAN		1. INCIDENT NAME	2. DATE/TIME PREPARED	3. OPERATIONAL PERIOD	
		McBride Underburn		Day Shift	
4. BASIC RADIO CHANNEL UTILIZATION					
SYSTEM / CACHE	CHANNEL	FUNCTION	FREQUENCY	ASSIGNMENT	REMARKS
	1	SMMU District	Tx: 166.9875 Rx: 166.9875	Alternate Command	Tone 7
	2	SHF - R	Tx: 165.0125 Rx: 171.5750	Command	Tone 6
	4	R5 Tac-4	Tx: 166.5500 Rx: 166.5500	Firing/Holding Tac	
	5	R5 Tac-5	Tx: 167.1125 Rx: 167.1125	Roads Tac	
	15	A/G – 08	Tx: 166.8750 Rx: 166.8750	Air to Ground	
	7	CAL FIRE SKU	Tx: 159.3600 Rx: 151.3250	Medical Emergency	Tone 7
	14	CALCORD	Tx: 156.0750 Rx: 156.0750	Medical Emergency Air / Ground	Tone 6
ICS 205	5. PREPARED BY (COMMUNICATIONS UNIT)				

U.S.D.A. Forest Service	1. Work Project/Activity Prescribed Fire	2. Location Shasta-Trinity N.F.	3. Unit SMMU
Job Hazard Analysis (JHA)	4. Name of Analyst Josiah W Obst	5. Job Title Battalion 71	6. Date Prepared 10/08/2024
7. Tasks/Procedures	8. Hazards	9. Abatement Actions Engineering Controls*Substitutions*Administrative Controls*Personal Protective Equipment (PPE)	
Travel to, from, and on project -Pickup -Engine -ATV -UTV	-Slippery road surfaces -Soft shoulders -Unimproved and narrow roads -Weather -Darkness -Driving in Smoke	-Drive defensively -Perform a pre-use inspection on equipment -Identify any known road hazards to other personnel -Use safety gear: seatbelts, headlights, chock vehicle, and use a backer -Qualified ATV/UTV operators only. -2 or 4 occupants per UTV plus equipment depending on which UTV. Do not exceed GVWR or max occupancy. -1 rider per ATV, limited to 3 fuel container not exceeding 5 gal each and not exceeding the rated capacity of the cargo rack. Rider must wear DOT, ANSI or SMF approved helmet. Helmets can be provided by Fuels Management Office.	
Qualifications for assigned position	-Lack of experience	-Assigned resources must be qualified and current before engaging in prescribed fire activities. Refer to FSH 5109.17	
Protective clothing and equipment (All Activities)	-Injuries -Burns -Death	-Wear all PPE when engaged in prescribed fire activities. -Use equipment appropriately and for its intended purpose. -Always have an escape route.	
Ignition	-Injuries -Entrapment -Environmental Hazard	-Maintain communications with all other ignitions personnel. -Coordinate Ignition's strategy with designated holding forces. -Do not fill drip torches where fuel might light unexpectedly. -Avoid spilling fuel on clothing. -Be mindful of bees, snakes, wildlife and inform other personnel if there is a risk of injury. -Ignition team may be required to carry a hand-tool.	
Holding	-Injuries -Smoke inhalation -Environmental Hazard -Smoke on roadways	-Same as Ignition (see above) with the addition of... -Notifications to ignition and burn boss if holding actions are not being effective or is getting stretched out and if capabilities are exceeded. -Post signs and/or perform traffic control if road is impacted by smoke.	
Mop-up and Patrol	-Stump holes -Fire weakened trees -Complacency	-Identify areas of potential hazard and flag for others. -Look up, Look down and look all around before entering burned out area. -Continue using situational awareness and monitor for fatigue with those that you are working with.	
Fuel – Mixing	-Burns -Spills -Fuel on clothing	-Use proper mixing ratio 3-1, diesel to gas. -Use approved containers designated for fuel and use labels to identify content.	
Emergency Evacuation Procedures (EEP)	-Serious illness or injury	-Review Emergency Evacuation Plan located in the Incident Action Plan (Required for Type 2 RX plan). - On-site FS engine shall have BLS equipment to initiate basic life support until responsible medical first responders arrive. Identify EMT's and available medical equipment on project during briefing.	
Common to all Tasks and Hazards	-Brief all resource on the prescribed fire plan and strategy of the day -Maintain LCES at all times. -Follow 10's & 18's -Always use appropriate PPE. -Remember 2-1 work/rest guidelines and rotate personnel if they are working in heavy smoke for long periods of time. -Maintain a high level of aerobic fitness to protect yourself against heat stress. -Drink lots of fluids before, during, and after work. -Periodically rotate crews from work sites with high smoke levels to areas of less smoke or smoke free areas.		
10. Line Officer Signature	11. Title	12. Date	

MEDICAL PLAN	McBride		0730-1800	Day Shift				
5. Incident Medical Aid Station								
Medical Aid Stations	Location	Paramedics						
		Yes	No					
6. Transportation								
A. Ambulance Services								
Name	Address	Phone	Paramedics					
			Yes	No				
Mt. Shasta Ambulance	1020 Oak St., Mt. Shasta, CA 96067	911	X					
B. Incident Ambulances								
Name	Location	Paramedics						
		Yes	No					
7. Hospitals								
		Travel Time			Helipad		Burn Center	
Name	Address	Air	Grnd	Phone	Y	N	Y	N
Mercy Medical Center M.S.	Mt. Shasta, CA 914 Pine St.	0:15	1:00	530-926-6111	X			X
Mercy Medical Center Redding	2175 Rosaline Ave, Redding, CA 96001	0:30	1:15	530-225-6000	X			X
UC Davis Medical Center	2315 Stockton Blvd, Sacramento, CA 95817	1:45	3:30	916-734-2011	X		X	
8. Medical Emergency Procedures								
<p><u>Minor emergency:</u> Notify supervisor. Provide First Aid. Assess need for transport.</p> <p><u>Major Emergency:</u> Notify RXB2. Provide First Aid. Stabilize and prepare patient for transport. Notify Dispatch of emergency and request appropriate assistance.</p>								
9. Prepared by (Medical Unit Leader)				10. Reviewed by (Safety Officer)				

FIELD MEDICAL EVACUATION PLAN

Shasta Trinity National Forest

Controlled Unclassified Information//Basic					
Project Name:	McBride	Forest:	Shasta-Trinity	District:	SMMU
Date:		Incident Number:		Plan Prepared By:	
<p>Qualified First Responders or the most senior qualified medical provider will provide patient assessment and first aid. Evacuation of serious injuries will be coordinated with the Emergency Command Center. Minor injuries will be treated, and transported by vehicle to a medical facility as necessary.</p>					
Contact					
Contact:	SHF Dispatch		Phone Number:	530-226-2400	
Frequency	Rx:	171.5750	Tx:	165.0125	Tone: 6
Alternate Contact:	SKU – Cal-Fire		Phone Number:	530-842-7066	
Injury Information					
Nature of Injury: <small>Avoid using names</small>					
Number to Transport:			Estimated Weights:		
Project Location					
Legal:	T40N, R4W, S3	Latitude:	N 41° 20.101	Longitude:	W 122° 18.343
Narrative: including major landmarks or cross roads	Adjacent to the Gateway Trailhead, approximately 1 mile up the Everitt Memorial Hwy, on the east side of the highway.				
Hazards: To ground or aviation resources	Public, snags, traffic, stump holes.		Weather Conditions: Wind speed and direction, visibility, temperature		
Closest Helispot Location					
Legal:	T40N, R4W, s10	Latitude:	N 41° 19.409	Longitude:	W 122° 18.241
Narrative: including major landmarks or cross roads	Mt Shasta High School Football field				
Medical Facility					
Nearest Facility:	Mercy Medical Center M.S.		Phone Number:	530-926-6111	
Travel Time:	10 Minutes		Address:	914 Pine St. Mt. Shasta, CA 96067	
Directions:	Head south on Everitt Memorial. Turn right on Rockfellow Dr. Left on East Alma St, then right on Pine St. Hospital on the right.				
24-Hour Facility:	Mercy Medical Center M.S.		Phone Number:	530-926-6111	
Travel Time:	10 Minutes		Address:	914 Pine St. Mt. Shasta, CA 96067	
Directions:					
Controlled Unclassified Information//Basic					

MEDICAL PLAN (8 - LINE)

Controlled Unclassified Information//Basic

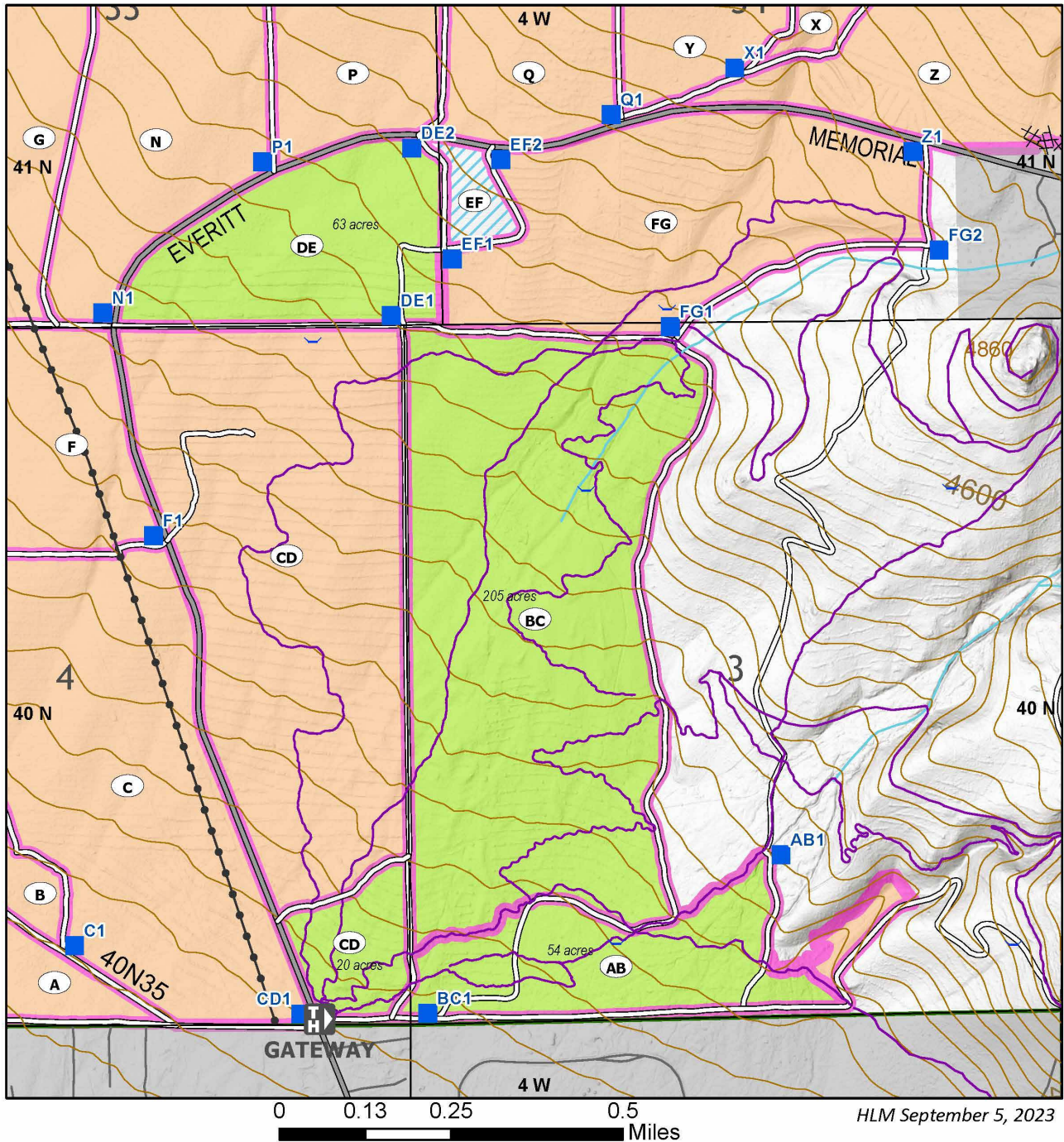
Medical Incident Report					
<p>FOR A NON-EMERGENCY INCIDENT, WORK THROUGH CHAIN OF COMMAND TO REPORT AND TRANSPORT INJURED PERSONNEL AS NECESSARY.</p> <p>FOR A MEDICAL EMERGENCY: IDENTIFY ON SCENE INCIDENT COMMANDER BY NAME AND POSITION AND ANNOUNCE "MEDICAL EMERGENCY" TO INITIATE RESPONSE FROM IMT COMMUNICATIONS/DISPATCH.</p>					
<p>Use the following items to communicate situation to communications/dispatch.</p>					
<p>1. CONTACT COMMUNICATIONS / DISPATCH (Verify correct frequency prior to starting report) <i>Ex: "Communications, Div. Alpha. Stand-by for Emergency Traffic."</i></p>					
<p>2. INCIDENT STATUS: Provide incident summary (including number of patients) and command structure. <i>Ex: "Communications, I have a Red priority patient, unconscious, struck by a falling tree. Requesting air ambulance to Forest Road 1 at (Lat./Long.) This will be the Trout Meadow Medical, IC is TFLD Jones. EMT Smith is providing medical care."</i></p>					
Severity of Emergency / Transport Priority	<input type="checkbox"/> RED / PRIORITY 1 Life or limb threatening injury or illness. Evacuation need is IMMEDIATE <i>Ex: Unconscious, difficulty breathing, bleeding severely, 2° – 3° burns more than 4 palm sizes, heat stroke, disoriented.</i> <input type="checkbox"/> YELLOW / PRIORITY 2 Serious Injury or illness. Evacuation may be DELAYED if necessary. <i>Ex: Significant trauma, unable to walk, 2° – 3° burns not more than 1-3 palm sizes.</i> <input type="checkbox"/> GREEN / PRIORITY 3 Minor Injury or illness. Non-Emergency transport <i>Ex: Sprains, strains, minor heat-related illness.</i>				
Nature of Injury or Illness & Mechanism of Injury			Brief Summary of Injury or Illness (Ex: Unconscious, Struck by Falling Tree)		
Transport Request			Air Ambulance / Short Haul/Hoist Ground Ambulance / Other		
Patient Location			Descriptive Location & Lat. / Long. (WGS84)		
Incident Name			Geographic Name + "Medical" (Ex: Trout Meadow Medical)		
On-Scene Incident Commander			Name of on-scene IC of Incident within an Incident (Ex: TFLD Jones)		
Patient Care			Name of Care Provider (Ex: EMT Smith)		
<p>3. INITIAL PATIENT ASSESSMENT: Complete this section for each patient as applicable (start with the most severe patient)</p>					
Patient Assessment: See IRPG page 106					
Treatment:					
<p>4. TRANSPORT PLAN:</p>					
Evacuation Location (if different): (Descriptive Location (drop point, intersection, etc.) or Lat. / Long.) Patient's ETA to Evacuation Location:					
Helispot / Extraction Site Size and Hazards:					
<p>5. ADDITIONAL RESOURCES / EQUIPMENT NEEDS:</p>					
<i>Example: Paramedic/EMT, Crews, Immobilization Devices, AED, Oxygen, Trauma Bag, IV/Fluid(s), Splints, Rope rescue, Wheeled litter, HAZMAT, Extrication</i>					
<p>6. COMMUNICATIONS: Identify State Air/Ground EMS Frequencies and Hospital Contacts as applicable</p>					
Function	Channel Name/Number	Receive (RX)	Tone/NAC *	Transmit (TX)	Tone/NAC *
COMMAND					
AIR-TO-GRND					
TACTICAL					
<p>7. CONTINGENCY: Considerations: If primary options fail, what actions can be implemented in conjunction with primary evacuation method? Be thinking ahead.</p>					
<p>8. ADDITIONAL INFORMATION: Updates/Changes, etc.</p>					
<p>REMEMBER: Confirm ETA's of resources ordered. Act according to your level of training. Be Alert. Keep Calm. Think Clearly. Act Decisively.</p>					








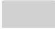
[illegible]

Weather Log McBride RX

RX	Time							
35-85	Dry							
12-50%	RH							
0-10 w/gusts to-15	Wind							
3-10%	FDFM							
5-15%	10 hr							
	P.I.G							

Shasta Trinity National Forest
Shasta McCloud Management Unit
McBride Underburn 2023



- | | | |
|---|---|---|
|  Burn Unit |  Planned Fall 2023 |  Gateway Trails |
|  Burned |  Guzzlers |  Powerline |
| |  Drop Points |  Non Forest Service Land |