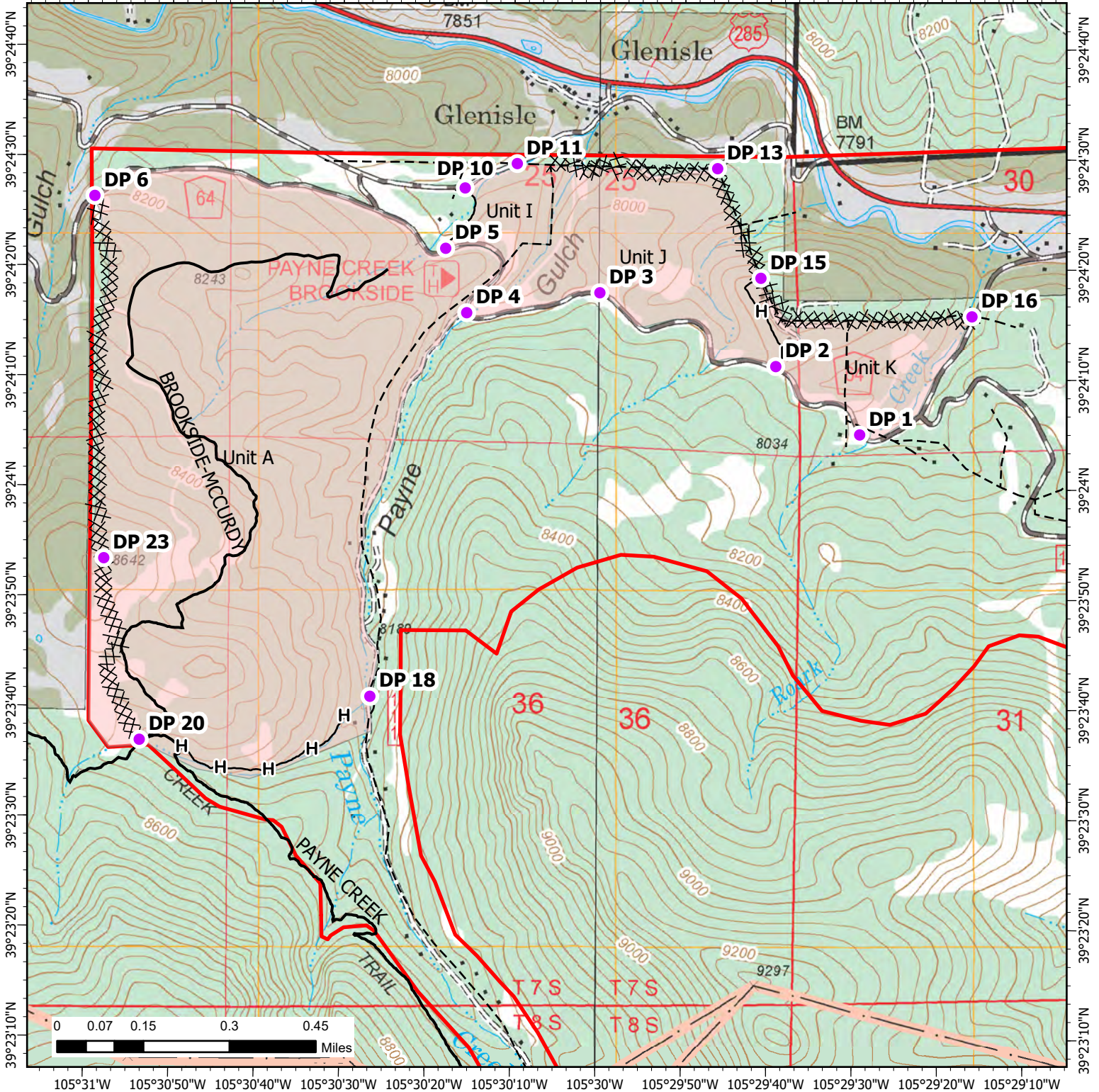




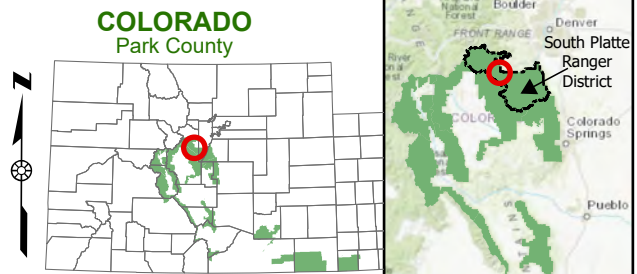
# Payne Gulch Prescribed Fire

Pike-San Isabel National Forests &  
Cimarron and Comanche National Grasslands  
South Platte Ranger District

105°31'W 105°30'50"W 105°30'40"W 105°30'30"W 105°30'20"W 105°30'10"W 105°30'W 105°29'50"W 105°29'40"W 105°29'30"W 105°29'20"W 105°29'10"W



- XX XX Completed Dozer Line
- H— Completed Hand Line
- Trails
- - - Powerlines
- Ignition Units
- Unit A - 329 acres
- Unit I - 22 acres
- Unit J - 69 acres
- Unit K - 29 acres
- Payne Gulch Project Area
- Drop Points



Disclaimer: The USDA Forest Service makes no warranty, expressed or implied regarding the data displayed on this map, and reserves the right to correct, update, modify, or replace this information without notification.