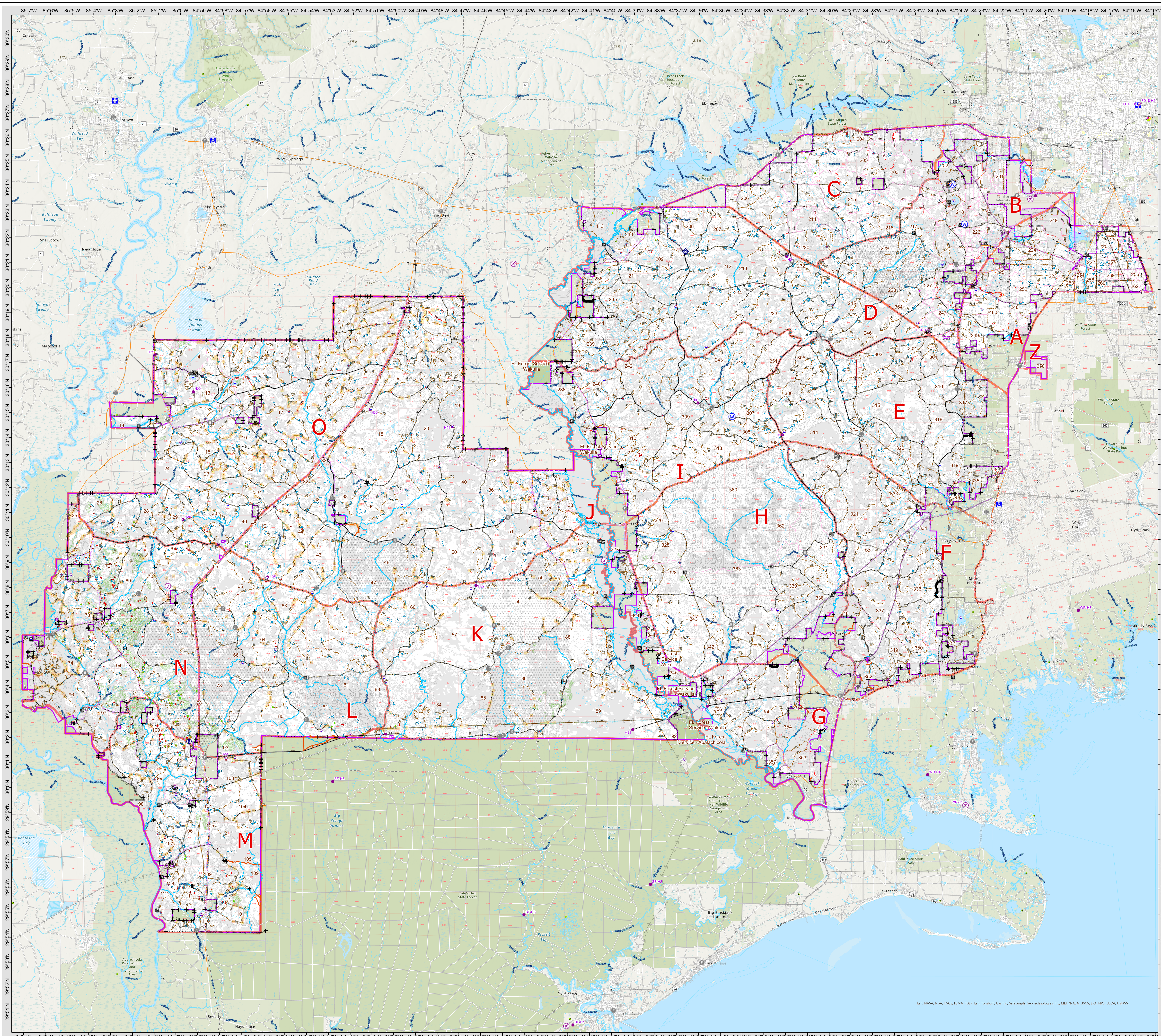
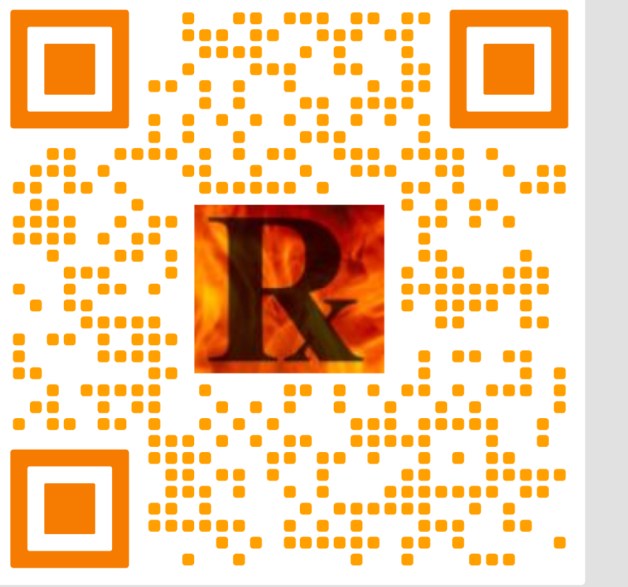
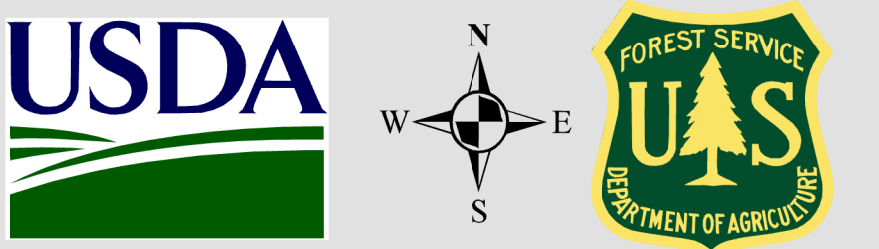


Apalachicola National Forest Emergency Response Map



Legend

FirePoint

- Circle with crosshair: Active or Inactive
- Circle with dot: Check Point
- Circle with 'X': Fire Station
- Circle with 'W': Water at Risk
- Circle with 'P': Pipeline
- Circle with 'R': Road
- Circle with 'S': Structure
- Circle with 'T': Tank
- Circle with 'U': Utility
- Circle with 'V': Vehicle
- Circle with 'W': Water Source
- Circle with 'X': Other

Water Source

- Blue line: Stream
- Blue area: Reservoir
- Blue circle: Well
- Blue square: Pond
- Blue triangle: Dam
- Blue diamond: Pipeline
- Blue star: Other

Other Features

- Red line: Boundary
- Green area: Forest
- Blue area: Water
- Grey area: Urban
- White area: Rural

Emergency Response Points

- Red dot: Tree Down - Not Possible
- Red dot: Tree Down - Possible
- Red dot: Road Down - Not Possible
- Red dot: Road Down - Possible
- Red dot: Utility Damage - Not Possible
- Red dot: Utility Damage - Possible
- Red dot: Structure Damage - Not Possible
- Red dot: Structure Damage - Possible
- Red dot: Vehicle Damage - Not Possible
- Red dot: Vehicle Damage - Possible
- Red dot: Pipeline Damage - Not Possible
- Red dot: Pipeline Damage - Possible
- Red dot: Tank Damage - Not Possible
- Red dot: Tank Damage - Possible
- Red dot: Other Damage - Not Possible
- Red dot: Other Damage - Possible

Local Roads Hierarchy

- Red line: Interstate
- Red line: State Road
- Red line: County Road
- Red line: Local Road

Rx Burn Fireline

- Red line: Control Line - Road
- Red line: Control Line - Other
- Red line: Control Line - Water
- Red line: Control Line - Other
- Red line: Access Line - UTV
- Red line: Boundary - Private
- Red line: Boundary - National Forest
- Red line: Boundary - Other

Scale

0 1.25 2.5 5 Miles

This map was produced by the US Forest Service on 9/24/2024.

This product is reproduced from geospatial information prepared by the U.S. Department of Agriculture, Forest Service. GIS data and product accuracy may vary. They may be developed from sources of differing accuracy, accurate only at certain scales, based on modeling or interpretation, incomplete while being created or revised, etc. Using GIS products for purposes other than those for which they were created may yield inaccurate or misleading results. The Forest Service reserves the right to correct, update, modify, or replace GIS products without notification.

For more information, contact: Apalachicola National Forest (850) 926-3561, 57 Taft Drive, Crawfordville, FL 32327.

Data Projection: NAD_1983_StatePlane_Florida_North_FIPS_0903_Feet

Esri, NASA, NGA, USGS, FEMA, FDEP, Esri, TomTom, Garmin, SafeGraph, GeoTechnologies, Inc, METI/NASA, USGS, EPA, NPS, USDA, USFS