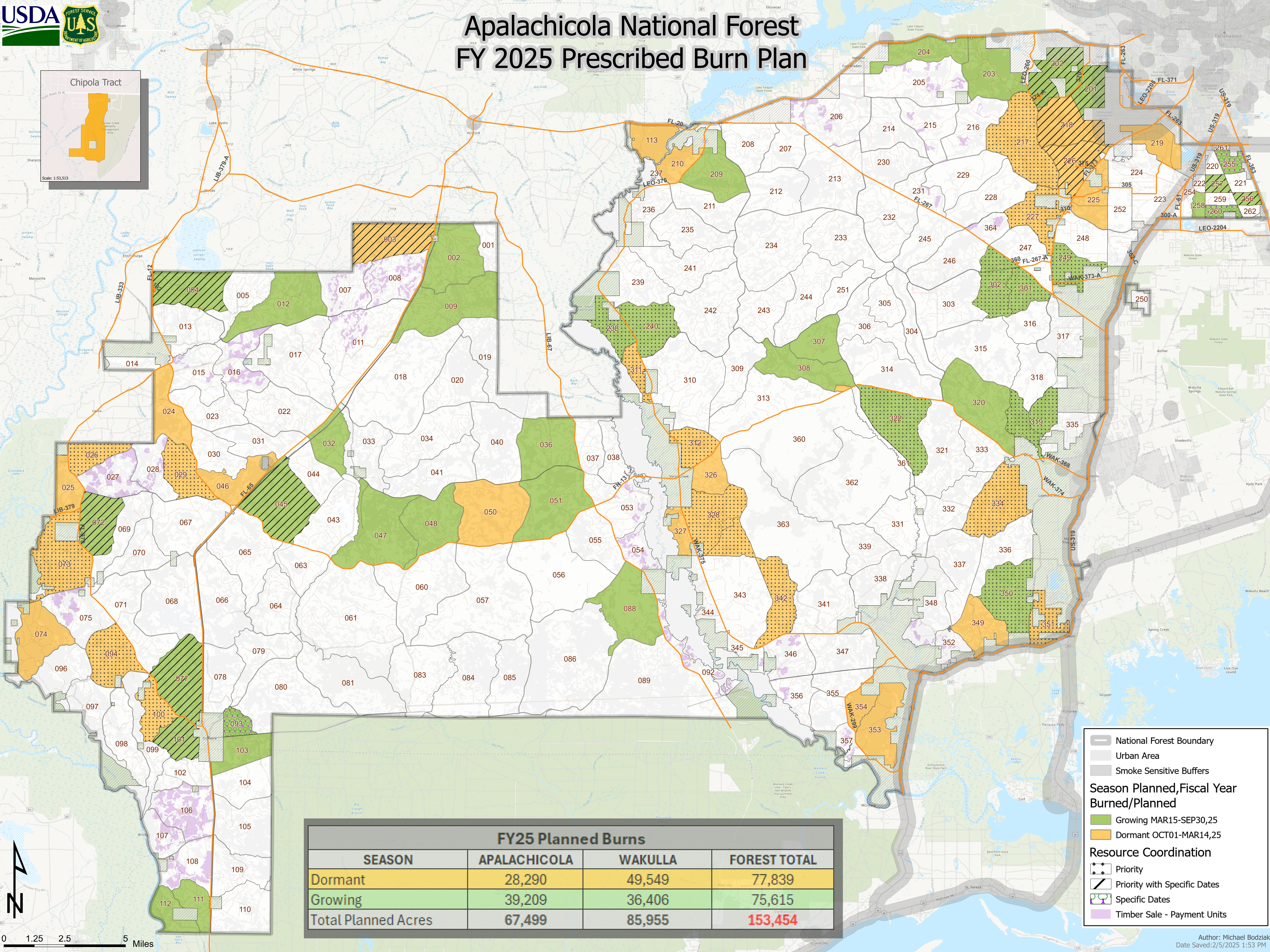
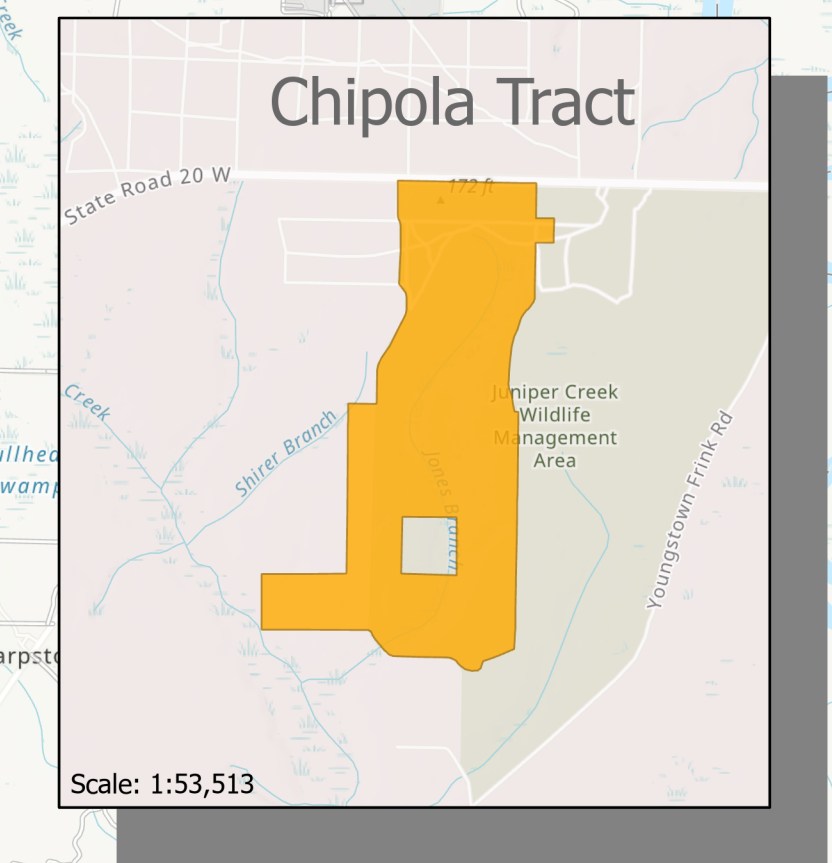


# Apalachicola National Forest FY 2025 Prescribed Burn Plan



FY25 Planned Burns			
SEASON	APALACHICOLA	WAKULLA	FOREST TOTAL
Dormant	28,290	49,549	77,839
Growing	39,209	36,406	75,615
<b>Total Planned Acres</b>	<b>67,499</b>	<b>85,955</b>	<b>153,454</b>

**Legend**

- National Forest Boundary
- Urban Area
- Smoke Sensitive Buffers
- Season Planned, Fiscal Year Burned/Planned**
  - Growing MAR15-SEP30,25
  - Dormant OCT01-MAR14,25
- Resource Coordination**
  - Priority
  - Priority with Specific Dates
  - Specific Dates
  - Timber Sale - Payment Units

