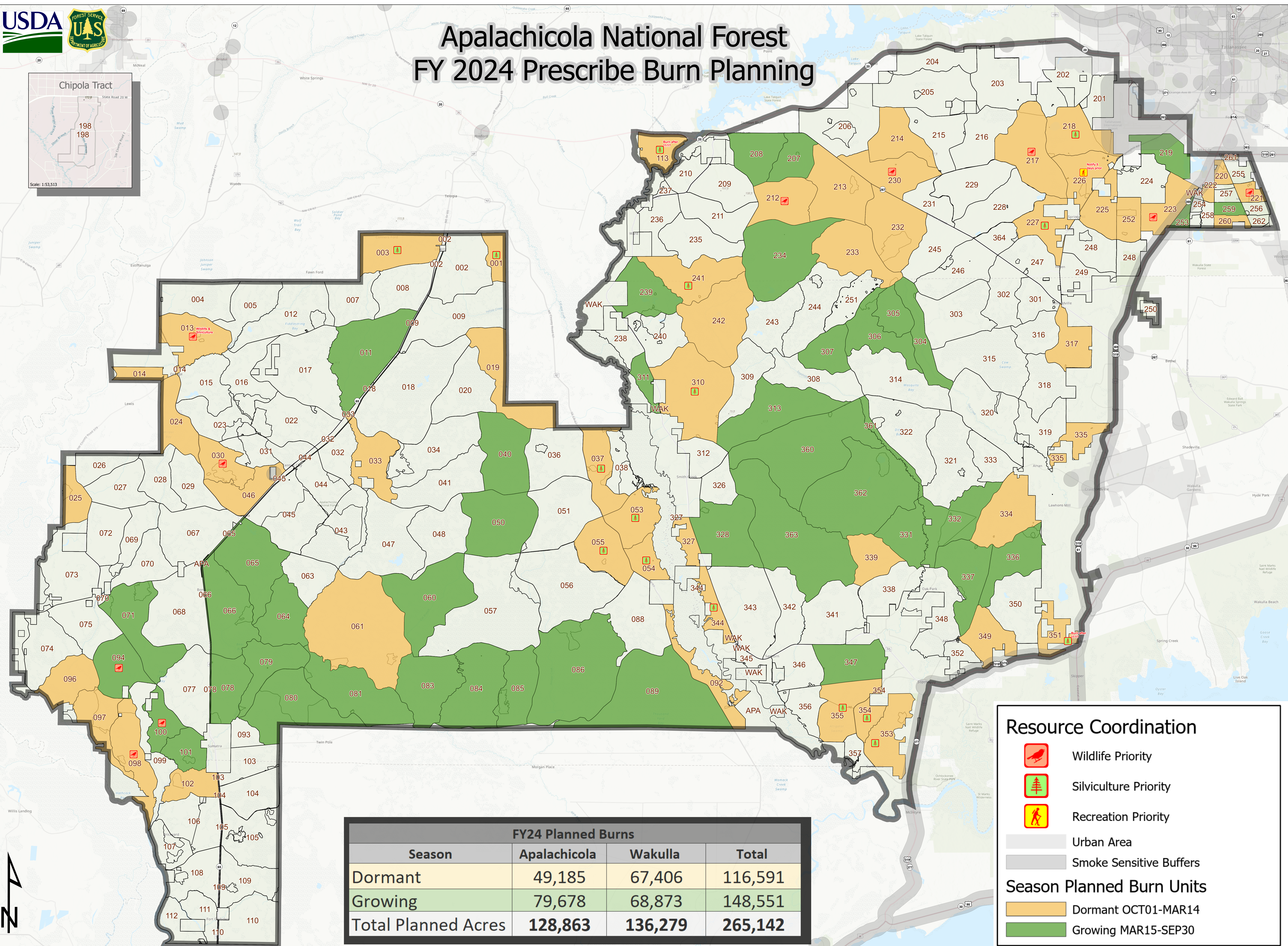
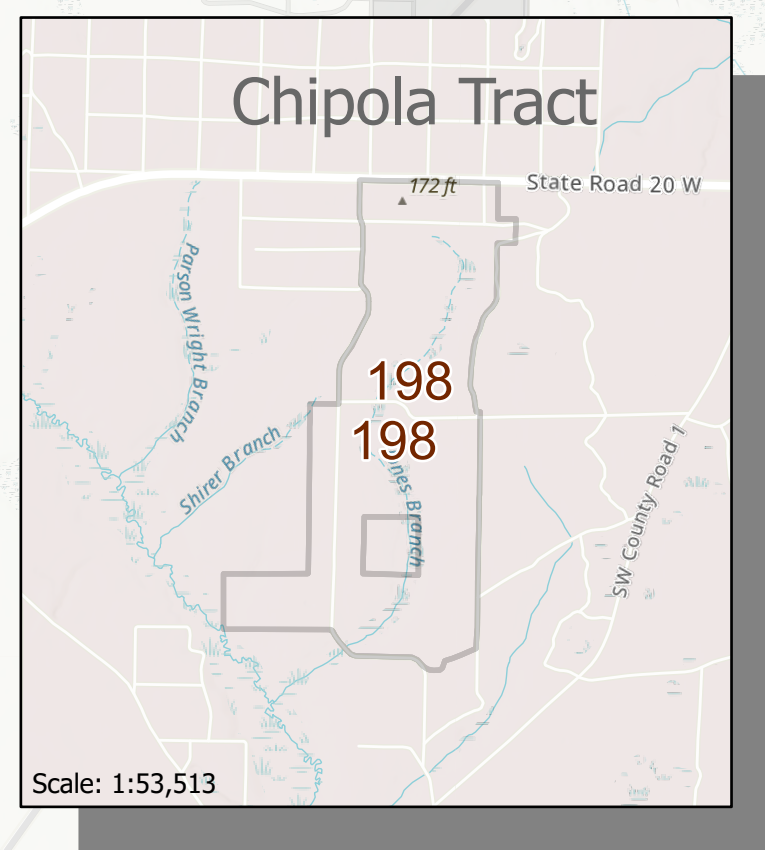




Apalachicola National Forest FY 2024 Prescribe Burn Planning



FY24 Planned Burns			
Season	Apalachicola	Wakulla	Total
Dormant	49,185	67,406	116,591
Growing	79,678	68,873	148,551
Total Planned Acres	128,863	136,279	265,142

Resource Coordination

- Wildlife Priority
- Silviculture Priority
- Recreation Priority
- Urban Area
- Smoke Sensitive Buffers

Season Planned Burn Units

- Dormant OCT01-MAR14
- Growing MAR15-SEP30

