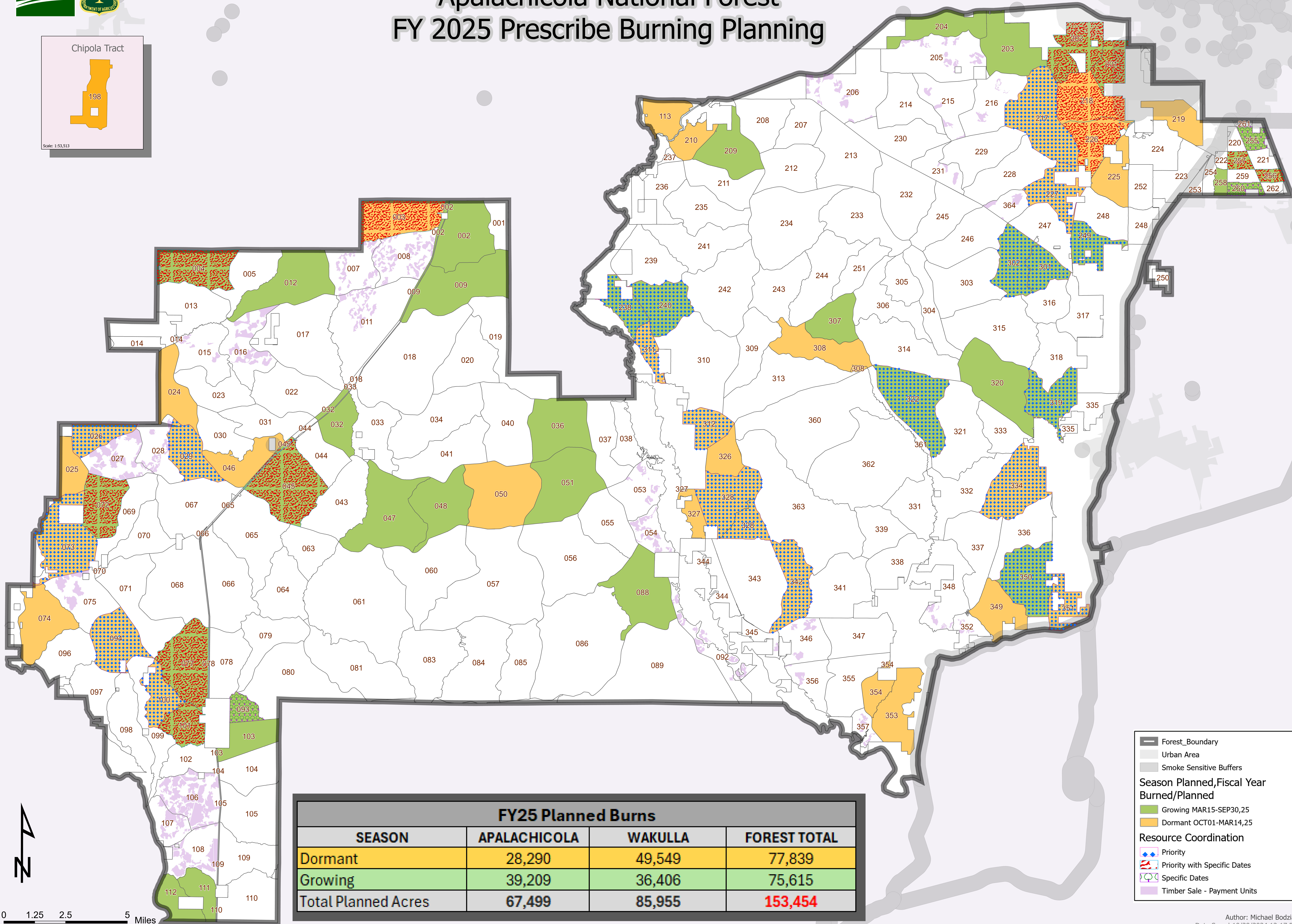
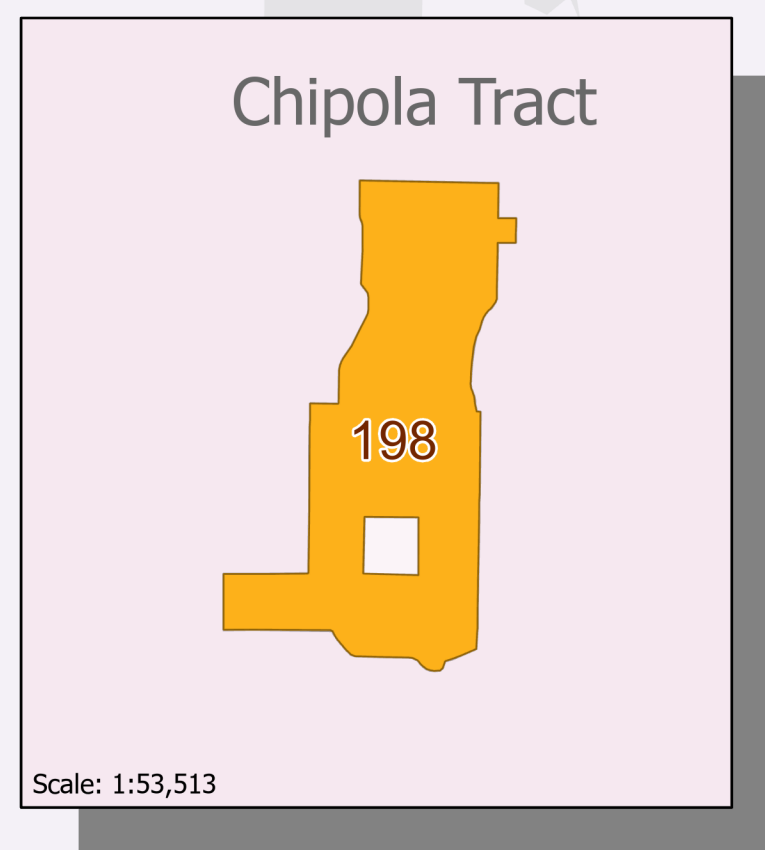




# Apalachicola National Forest FY 2025 Prescribe Burning Planning



FY25 Planned Burns			
SEASON	APALACHICOLA	WAKULLA	FOREST TOTAL
Dormant	28,290	49,549	77,839
Growing	39,209	36,406	75,615
<b>Total Planned Acres</b>	<b>67,499</b>	<b>85,955</b>	<b>153,454</b>

- Forest\_Boundary
- Urban Area
- Smoke Sensitive Buffers
- Season Planned, Fiscal Year Burned/Planned**
- Growing MAR15-SEP30,25
- Dormant OCT01-MAR14,25
- Resource Coordination**
- Priority
- Priority with Specific Dates
- Specific Dates
- Timber Sale - Payment Units

