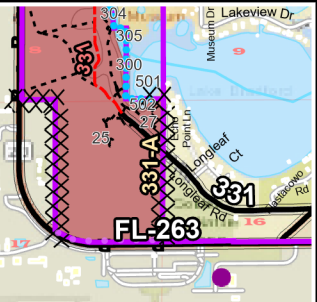
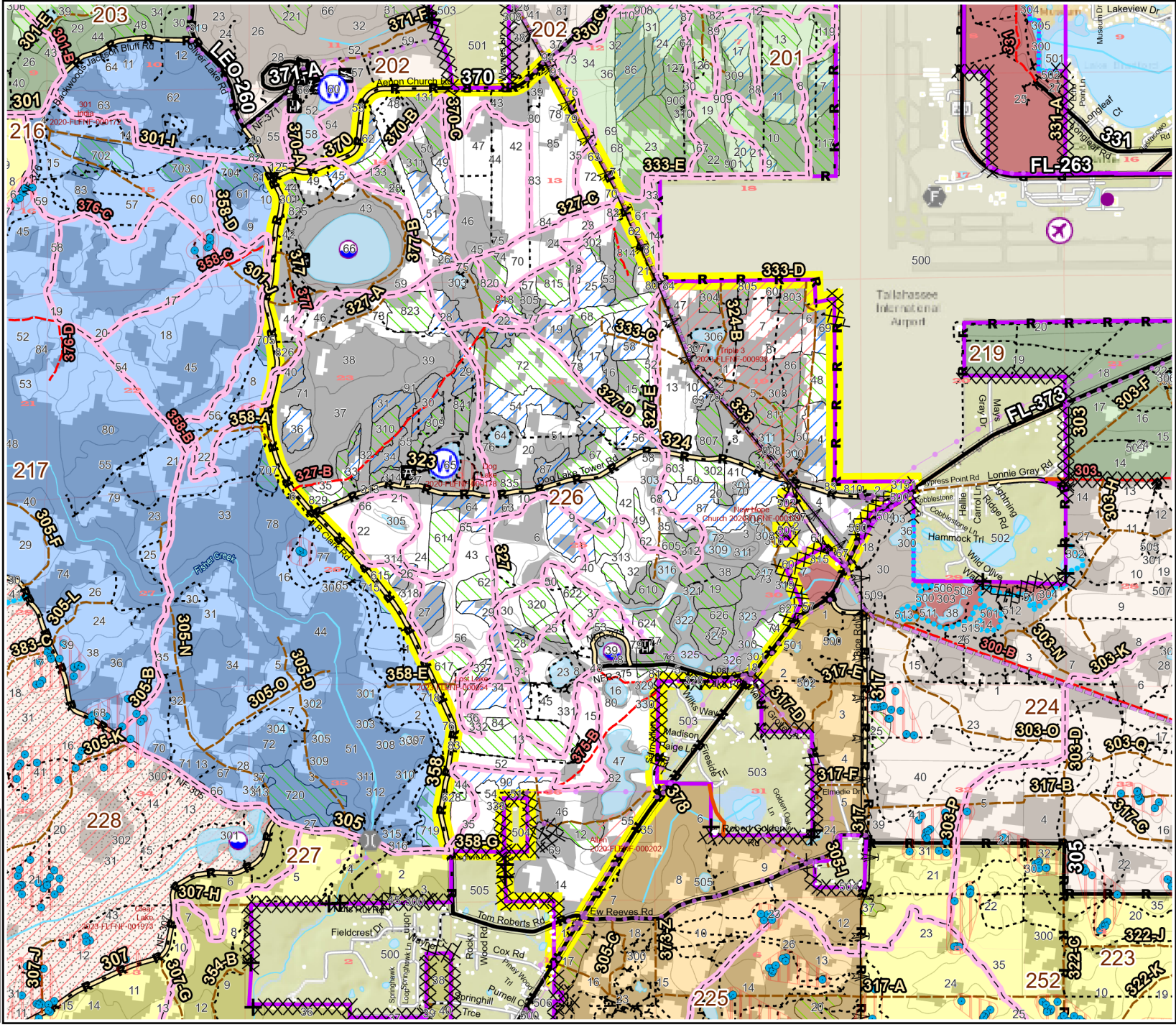
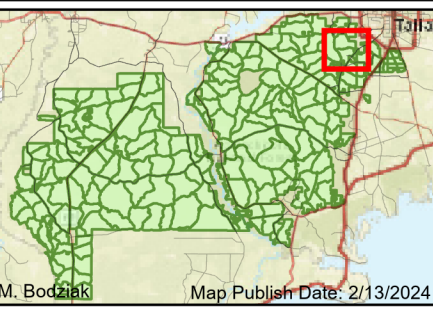


**Prescribe Burn Map**  
 District: Wakulla Ranger District  
 Apalachicola National Forest  
**Burn Unit 218&226**  
 4,650 FACTS Reportable Acres  
 2,088 Burnable Acres  
 Last Burned: 218: 5/3/2015  
 226: 3/5/2020

- RCW Trees
- RCW Cluster
- Building Footprints
- ⚡ Power
- Transmission Line
- Local Power Line
- - - Gas
- - - Telephone
- - - Trails
- + Fireline Tie In
- X Control Line - Dozer
- R Control Line - Road
- Boundary- Private
- Unknown

**Burn Unit Info**

<span style="background-color: yellow;">■</span> Burn Unit	<span style="background-color: #d2b48c;">■</span> 0-1
<span style="background-color: gray;">■</span> Private	<span style="background-color: #90ee90;">■</span> 1-2
<span style="border: 1px dashed black;">■</span> USFS No Burn	<span style="background-color: #90ee90;">■</span> 2-3
<span style="background-color: #ffff00;">■</span> Burnable Area	<span style="background-color: #ffff00;">■</span> 3-4
<span style="background-color: #cccccc;">■</span> Did not burn last 27 yrs	<span style="background-color: #ff4500;">■</span> 4-5
<span style="background-color: #ffffff;">■</span> Burned during last 27 yrs	<span style="background-color: #ff0000;">■</span> 5-10
	<span style="background-color: #800000;">■</span> 11-13



BurnDate	Tr.Winds	Temp	Mix Ht.
RH	Disp. Index	Wind	KBDI
DSR	RX Position	Burn Boss	