

Prescribe Burn Map

Apalachicola National Forest

Burn Unit 331 & 332

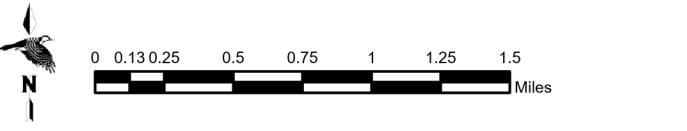
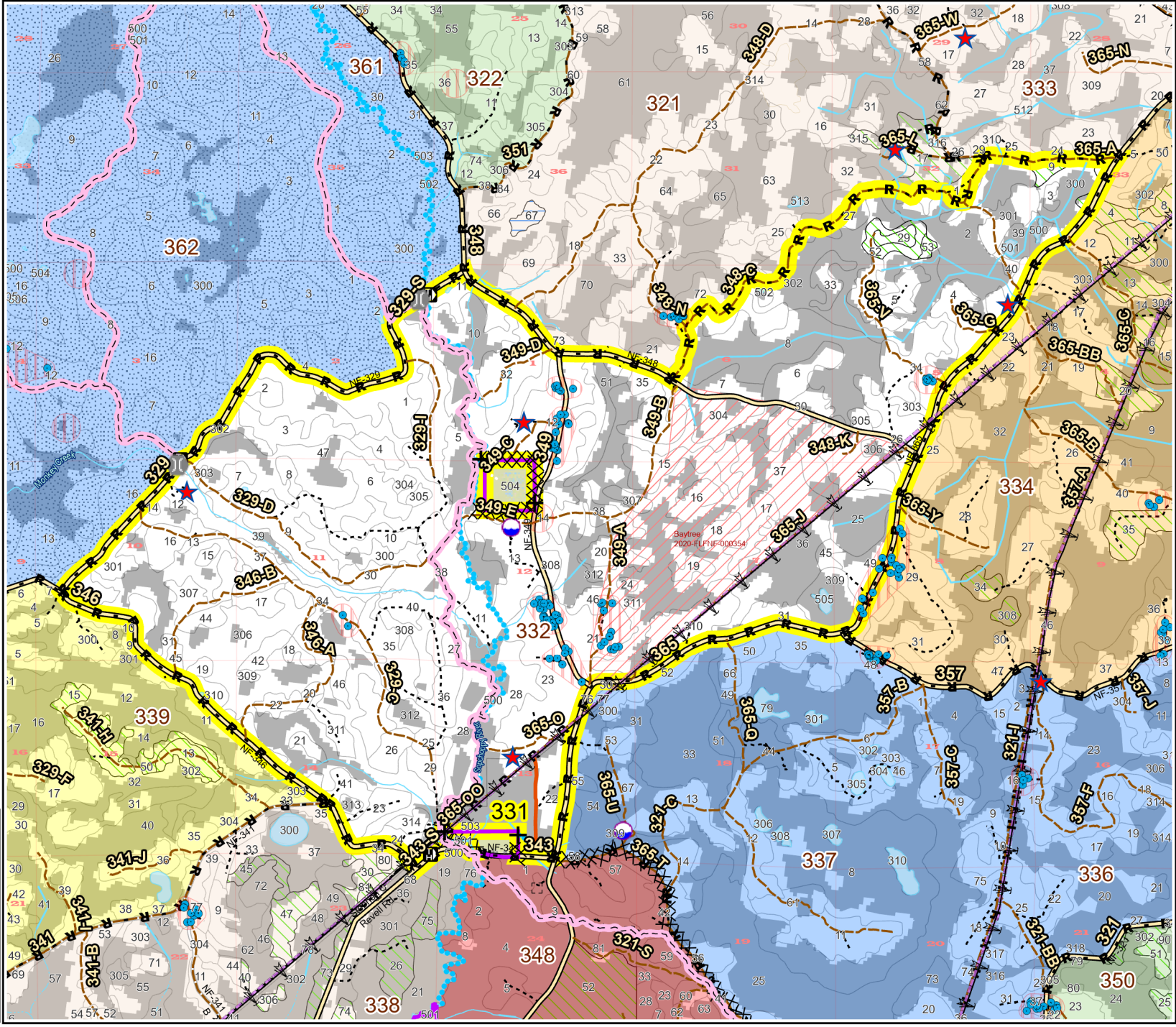
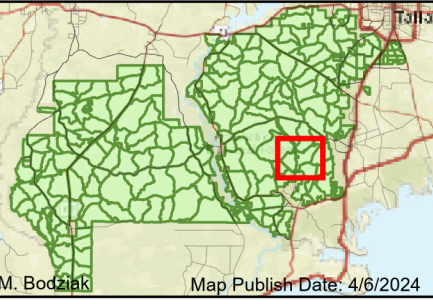
Last Burned: 331: 2/5/2021
 332: 2/25/2021

5396 FACTS Reportable Acres
 3850 Burnable Acres

- RCW Trees
- + Fireline Tie In
- RCW Cluster
- XX Control Line - Dozer
- ★ Apiary
- R Control Line - Road
- Cemetery
- Power
- Transmission Line
- Gas
- Boundary - Private
- Boundary - Unknown
- Trails
- Natural Feature

Burn Unit Info

 Burn Unit	 0-1
 Private	 1-2
XX USFS No Burn	 2-3
 Burnable Area	 3-4
 Did not burn last 27 yrs	 4-5
 Burned during last 27 yrs	 5-10
	 11-13



BurnDate	Tr.Winds	Temp	Mix Ht.
RH	Disp. Index	Wind	KBDI
DSR	RX Position	Burn Boss	