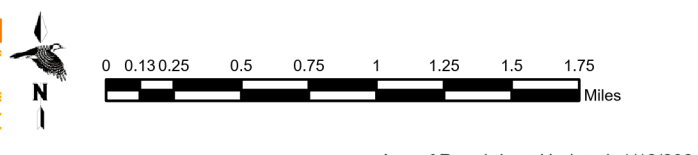
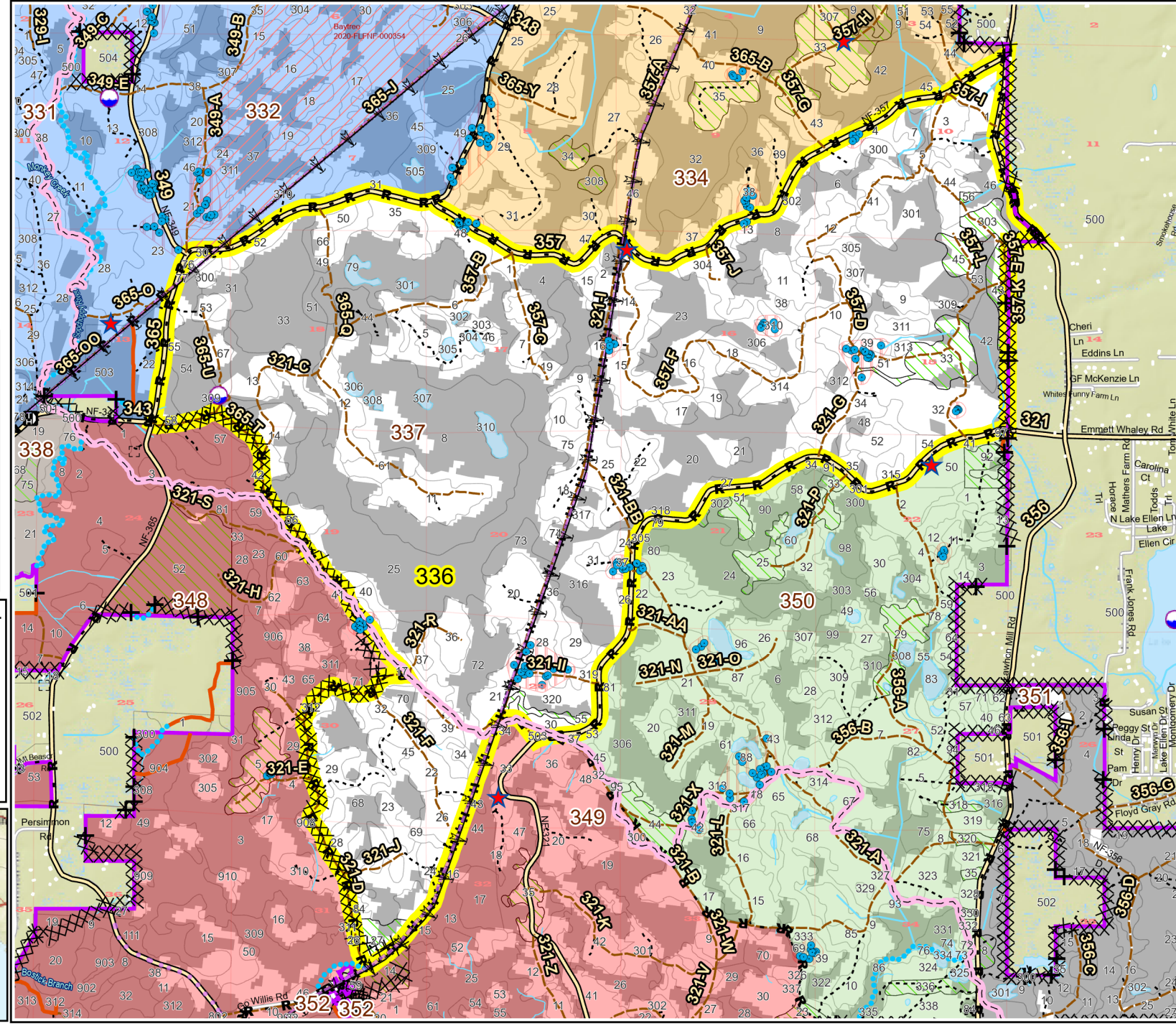
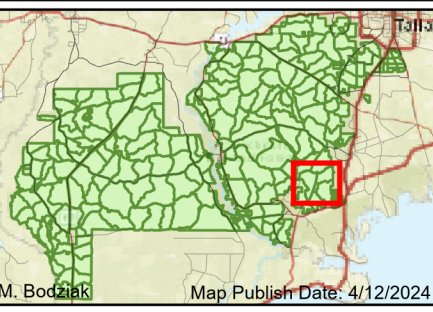


Prescribe Burn Map
 Apalachicola National Forest
Burn Unit 336 & 337
 Last Burned: 3/11/2021
 5596 FACTS Reportable Acres
 3184 Burnable Acres

- RCW Trees
- RCW Cluster
- ★ Apiary
- Cemetery
- Power
- Transmission Line
- Gas
- Trails
- + Fireline Tie In
- Control Line - Dozer
- Control Line - Road
- Control Line - Hand
- Boundary - Private
- Boundary - Natural Feature

| Burn Unit Info | |
|---|------------------------------------|
| Burn Unit | Adjacent Unit Yrs. Since Last Burn |
| Private | 0-1 |
| USFS No Burn | 1-2 |
| Burnable Area | 2-3 |
| Did not burn last 27 yrs | 3-4 |
| Burned during last 27 yrs | 4-5 |
| | 5-10 |
| | 11-13 |



| | | | |
|----------|-------------|-----------|---------|
| BurnDate | Tr.Winds | Temp | Mix Ht. |
| RH | Disp. Index | Wind | KBDI |
| DSR | RX Position | Burn Boss | |