

Prescribe Burn Map

District: Apalachicola
Apalachicola National Forest

Burn Unit 3

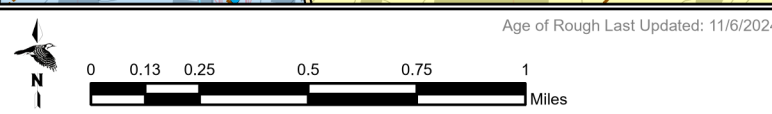
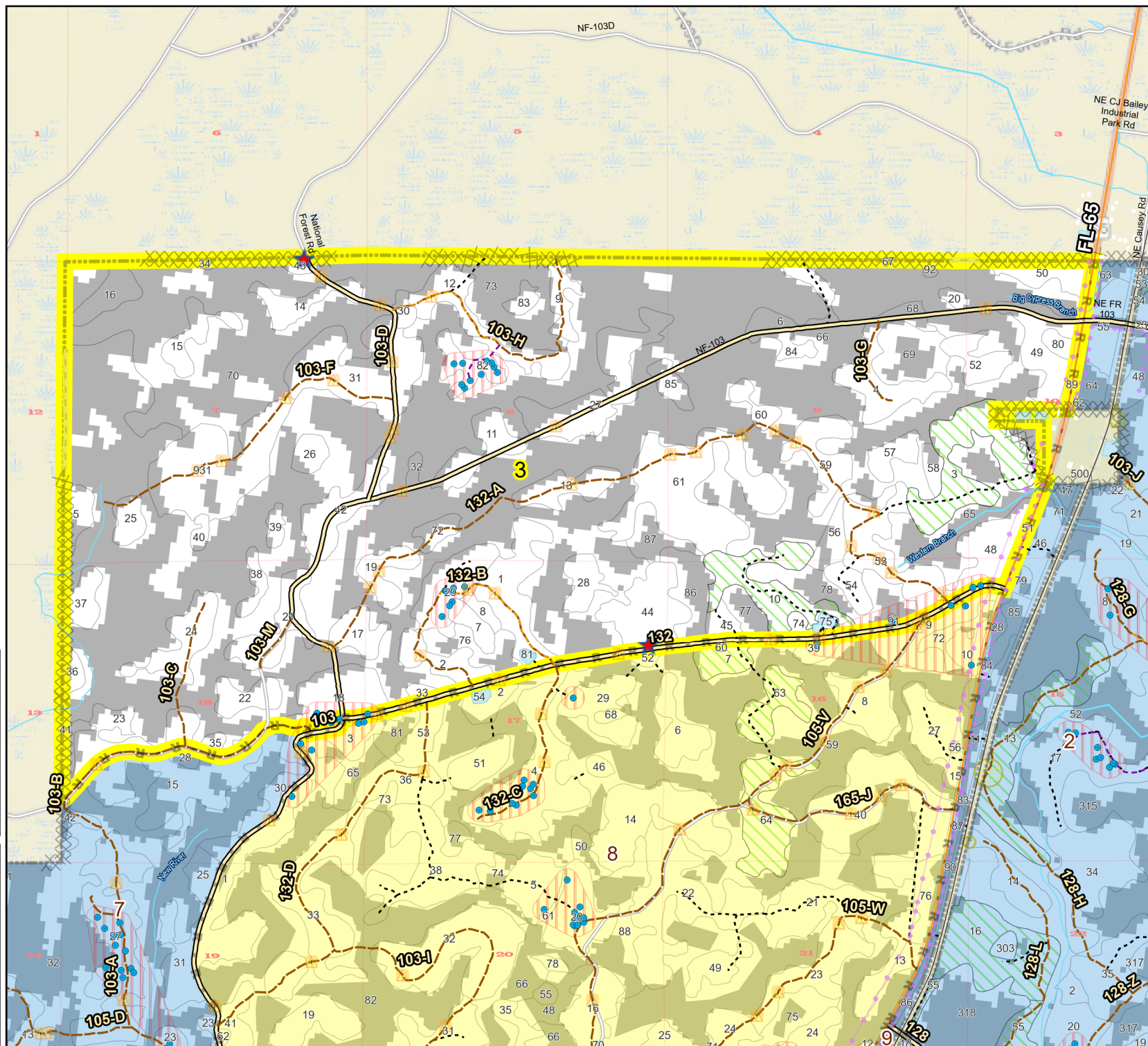
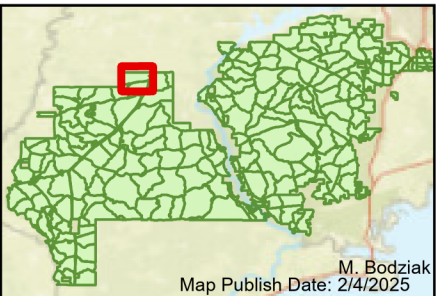
2926 FACTS Reportable Acres

1443 Burnable Acres

Last Burned: 2/7/2024

- RCW Tree
- RCW Cluster
- No Disturbance Zone
- Apiary
- Road Erosion
- Dozer Line
- Control Line
- Road
- Other Line
- Private Boundary Line
- access by foot
- access by utv
- Sapling Pines

Burn Unit Info		Yrs. Last Burn	
	Burn Unit		0 - 1
	Private		> 1 - 2
	USFS No Burn		> 2 - 3
	Did not burn last 27 yrs		> 3 - 4
	Burned during last 27 yrs		> 4 - 5
			> 5 - 10
			> 10 - 15
			> 15 - 20
			> 20 - 25



Age of Rough Last Updated: 11/6/2024

BurnDate _____	Tr.Winds _____	Temp _____	Mix Ht. _____
RH _____	Disp. Index _____	Wind _____	KBDI _____
DSR _____	RX Position _____	Burn Boss _____	