

Prescribe Burn Map

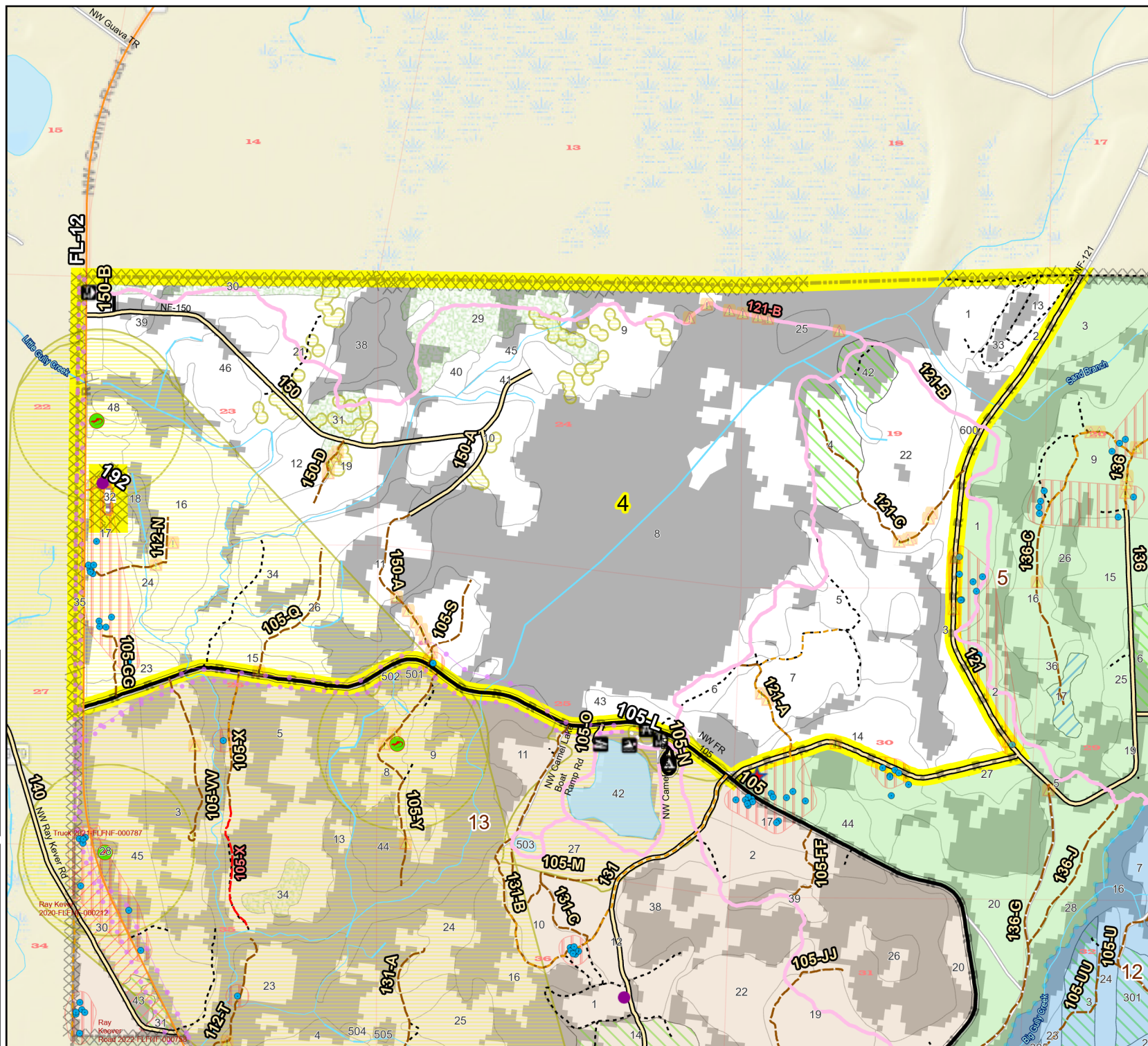
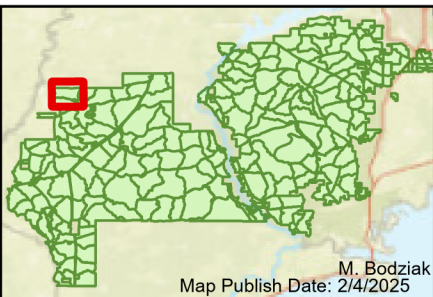
District: Apalachicola
Apalachicola National Forest

Burn Unit 4

2798 FACTS Reportable Acres
1626 Burnable Acres
Last Burned: 5/30/2023

- RCW Tree
- RCW Cluster
- No Disturbance Zone
- Active FS Pond
- Flatwood
- Salamander Potential Pond
- ★ Apiary
- Road Erosion
- Trails
- Dozer Line
- Control Line
- Road
- Natural Feature Line
- Private
- Boundary Line
- access by utv
- Young Longleaf
- Sapling Pines
- Savannah

- Burn Unit Info**
- Burn Unit
 - Private
 - USFS No Burn
- Burnable Area**
- Did not burn last 27 yrs
 - Burned during last 27 yrs
- Yrs. Last Burn**
- 0 - 1
 - > 1 - 2
 - > 2 - 3
 - > 3 - 4
 - > 4 - 5
 - > 5 - 10
 - > 10 - 15
 - > 15 - 20
 - > 20 - 25



Age of Rough Last Updated: 11/6/2024

BurnDate _____ Tr.Winds _____ Temp _____ Mix Ht. _____
 RH _____ Disp. Index _____ Wind _____ KBDI _____
 DSR _____ RX Position _____ Burn Boss _____

