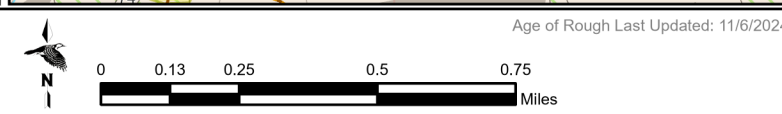
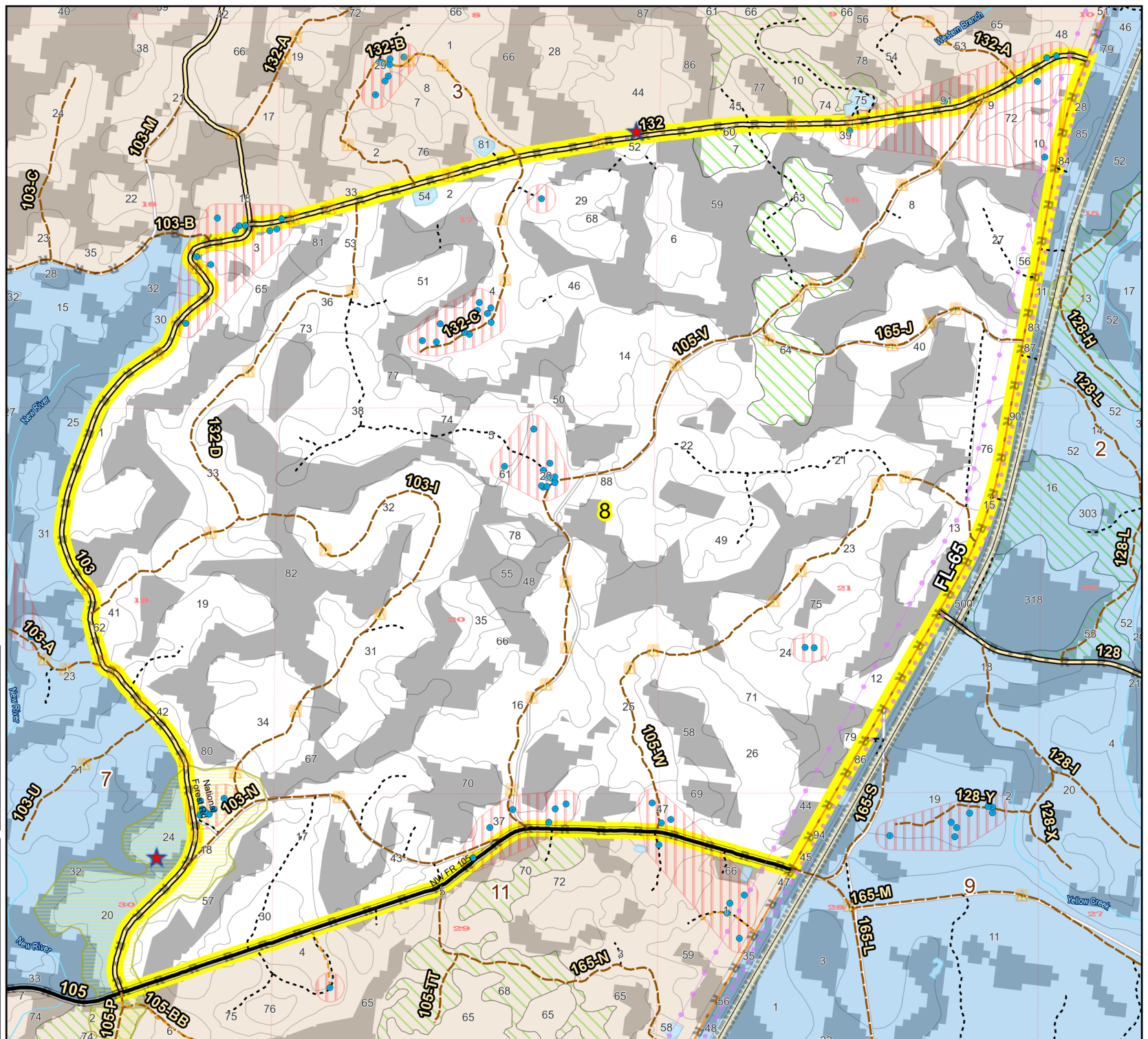
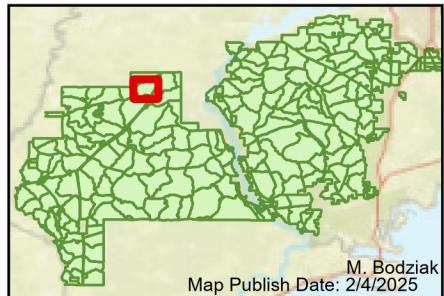


Prescribe Burn Map  
 District: Apalachicola  
 Apalachicola National Forest  
**Burn Unit 8**  
 2656 FACTS Reportable Acres  
 1798 Burnable Acres  
 Last Burned: 5/18/2021

- RCW Tree
- RCW Cluster
- No
- Disturbance Zone
- ★ Apiary
- Road Erosion Control Line
- Road
- Private
- Boundary Line
- access by utv
- Sapling Pines

Burn Unit Info		Yrs. Last Burn
<span style="border: 2px solid yellow; width: 15px; height: 10px; display: inline-block;"></span>	Burn Unit	0 - 1
<span style="background-color: gray; width: 15px; height: 10px; display: inline-block;"></span>	Private	> 1 - 2
<span style="border: 1px solid black; width: 15px; height: 10px; display: inline-block;"></span>	USFS No Burn	> 2 - 3
<span style="background-color: yellow; width: 15px; height: 10px; display: inline-block;"></span>		> 3 - 4
<span style="background-color: orange; width: 15px; height: 10px; display: inline-block;"></span>		> 4 - 5
<span style="background-color: red; width: 15px; height: 10px; display: inline-block;"></span>		> 5 - 10
<span style="background-color: lightblue; width: 15px; height: 10px; display: inline-block;"></span>		> 10 - 15
<span style="background-color: lightgreen; width: 15px; height: 10px; display: inline-block;"></span>		> 15 - 20
<span style="background-color: purple; width: 15px; height: 10px; display: inline-block;"></span>		> 20 - 25



Age of Rough Last Updated: 11/6/2024

BurnDate	Tr.Winds	Temp	Mix Ht.
RH	Disp. Index	Wind	KBDI
DSR	RX Position	Burn Boss	