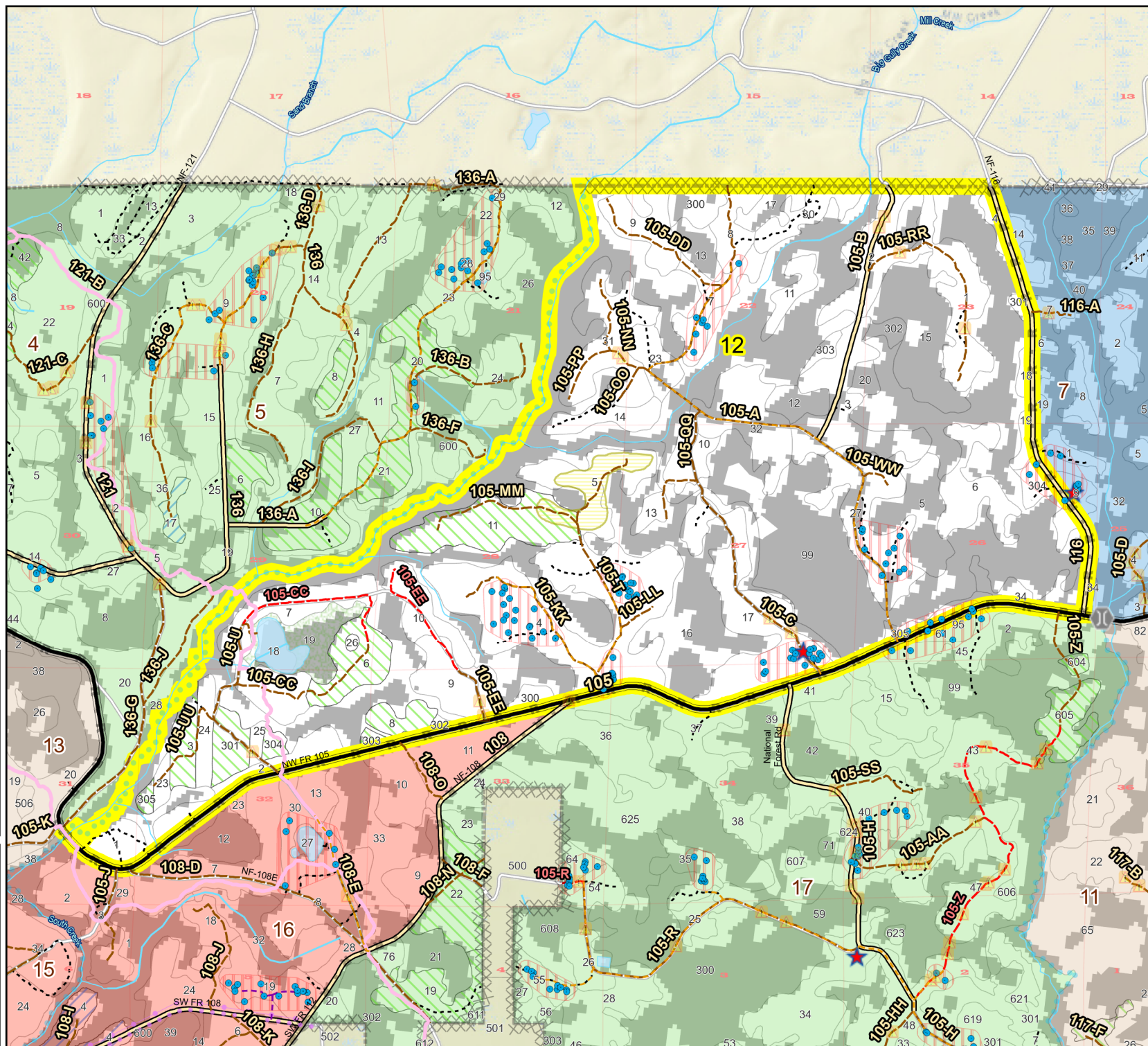
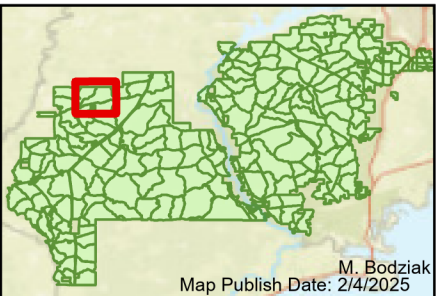


**Prescribe Burn Map**  
 District: Apalachicola  
 Apalachicola National Forest  
**Burn Unit 12**  
 3775 FACTS Reportable Acres  
 2263 Burnable Acres  
 Last Burned: 2/10/2022

- RCW Tree
- RCW Cluster
- No Disturbance Zone
- Apiary
- Road Erosion
- Trails
- Dozer Line
- Control Line
- Road
- Other Line
- Natural Feature Line
- Private Boundary Line
- access by foot
- access by utv
- Young Longleaf
- Sapling Pines
- Savannah

Burn Unit Info	
	Burn Unit
	Private
	USFS No Burn
Burnable Area	
	Did not burn last 27 yrs
	Burned during last 27 yrs

Yrs. Last Burn	
	0 - 1
	> 1 - 2
	> 2 - 3
	> 3 - 4
	> 4 - 5
	> 5 - 10
	> 10 - 15
	> 15 - 20
	> 20 - 25



Age of Rough Last Updated: 11/6/2024

0 0.13 0.25 0.5 0.75 1 1.25 Miles

BurnDate _____	Tr.Winds _____	Temp _____	Mix Ht. _____
RH _____	Disp. Index _____	Wind _____	KBDI _____
DSR _____	RX Position _____	Burn Boss _____	