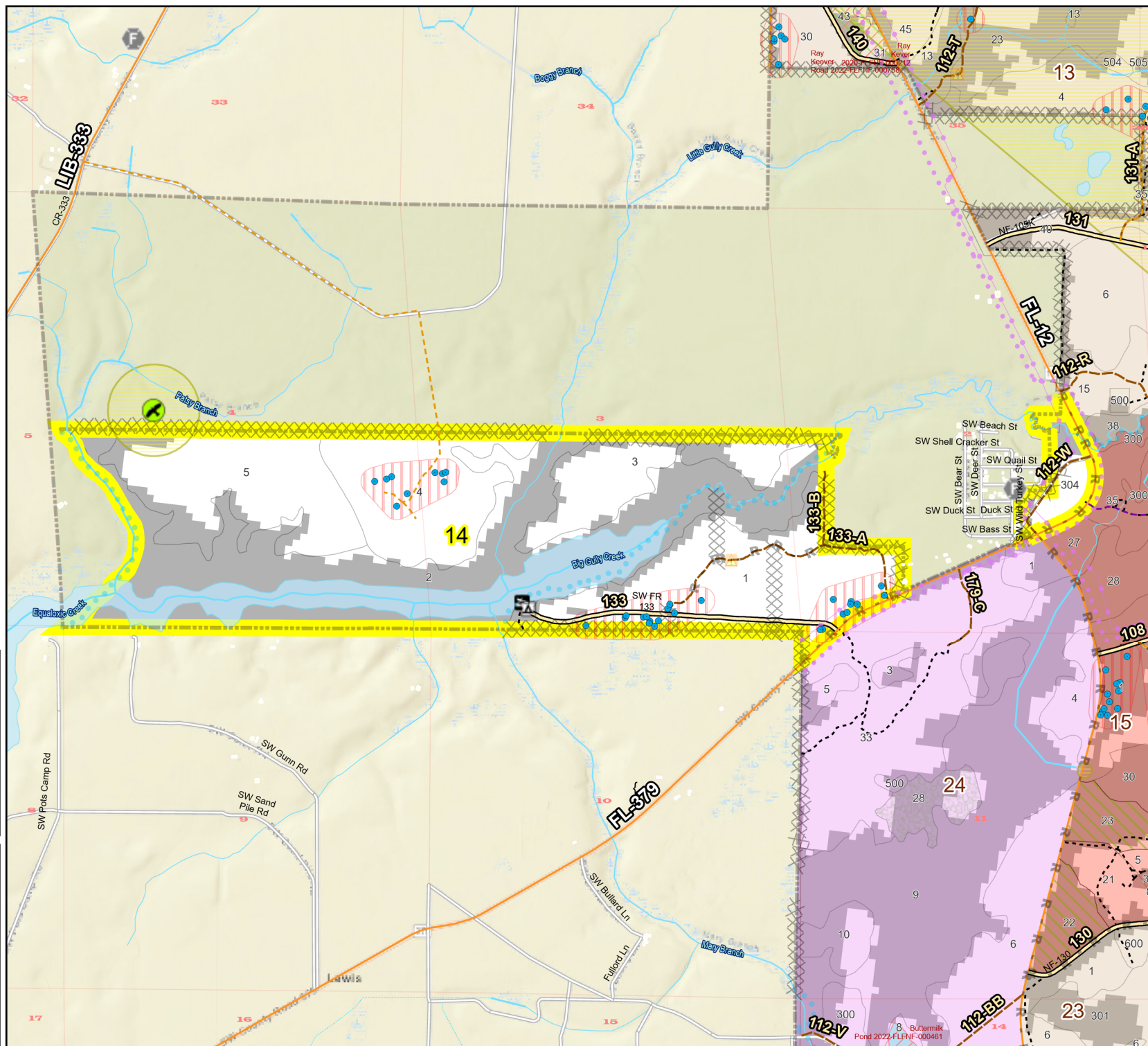
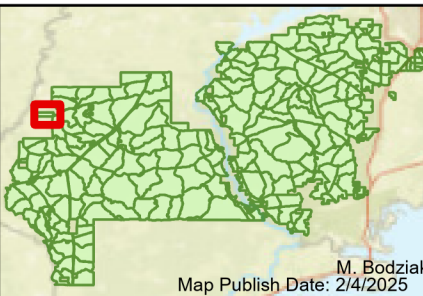


Prescribe Burn Map  
 District: Apalachicola  
 Apalachicola National Forest  
**Burn Unit 14**  
 727 FACTS Reportable Acres  
 383 Burnable Acres  
 Last Burned: 2/27/2024



- RCW Tree
- RCW Cluster
- No Disturbance Zone
- 🦅 Eagles
- Road Erosion
- Building Footprints
- Dozer Line
- Control Line
- Road
- Other Line
- Natural Feature Line
- Private Boundary Line
- access by foot
- access by utv
- Sapling Pines
- Savannah

Burn Unit Info		Yrs. Last Burn	
<span style="background-color: yellow; border: 1px solid black; padding: 2px;"> </span>	Burn Unit	<span style="background-color: #f0e68c; padding: 2px;"> </span>	0 - 1
<span style="background-color: gray; border: 1px solid black; padding: 2px;"> </span>	Private	<span style="background-color: #90ee90; padding: 2px;"> </span>	> 1 - 2
<span style="background-color: #ffff00; border: 1px solid black; padding: 2px;"> </span>	USFS No Burn	<span style="background-color: #add8e6; padding: 2px;"> </span>	> 2 - 3
		<span style="background-color: #90ee90; padding: 2px;"> </span>	> 3 - 4
		<span style="background-color: #ffcc99; padding: 2px;"> </span>	> 4 - 5
		<span style="background-color: #ff9966; padding: 2px;"> </span>	> 5 - 10
<span style="background-color: gray; border: 1px solid black; padding: 2px;"> </span>	Did not burn last 27 yrs	<span style="background-color: #ffccff; padding: 2px;"> </span>	> 10 - 15
<span style="background-color: white; border: 1px solid black; padding: 2px;"> </span>	Burned during last 27 yrs	<span style="background-color: #ccccff; padding: 2px;"> </span>	> 15 - 20
		<span style="background-color: #9999ff; padding: 2px;"> </span>	> 20 - 25



Age of Rough Last Updated: 11/6/2024

BurnDate	Tr.Winds	Temp	Mix Ht.
RH	Disp. Index	Wind	KBDI
DSR	RX Position	Burn Boss	