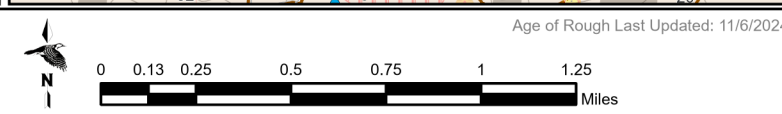
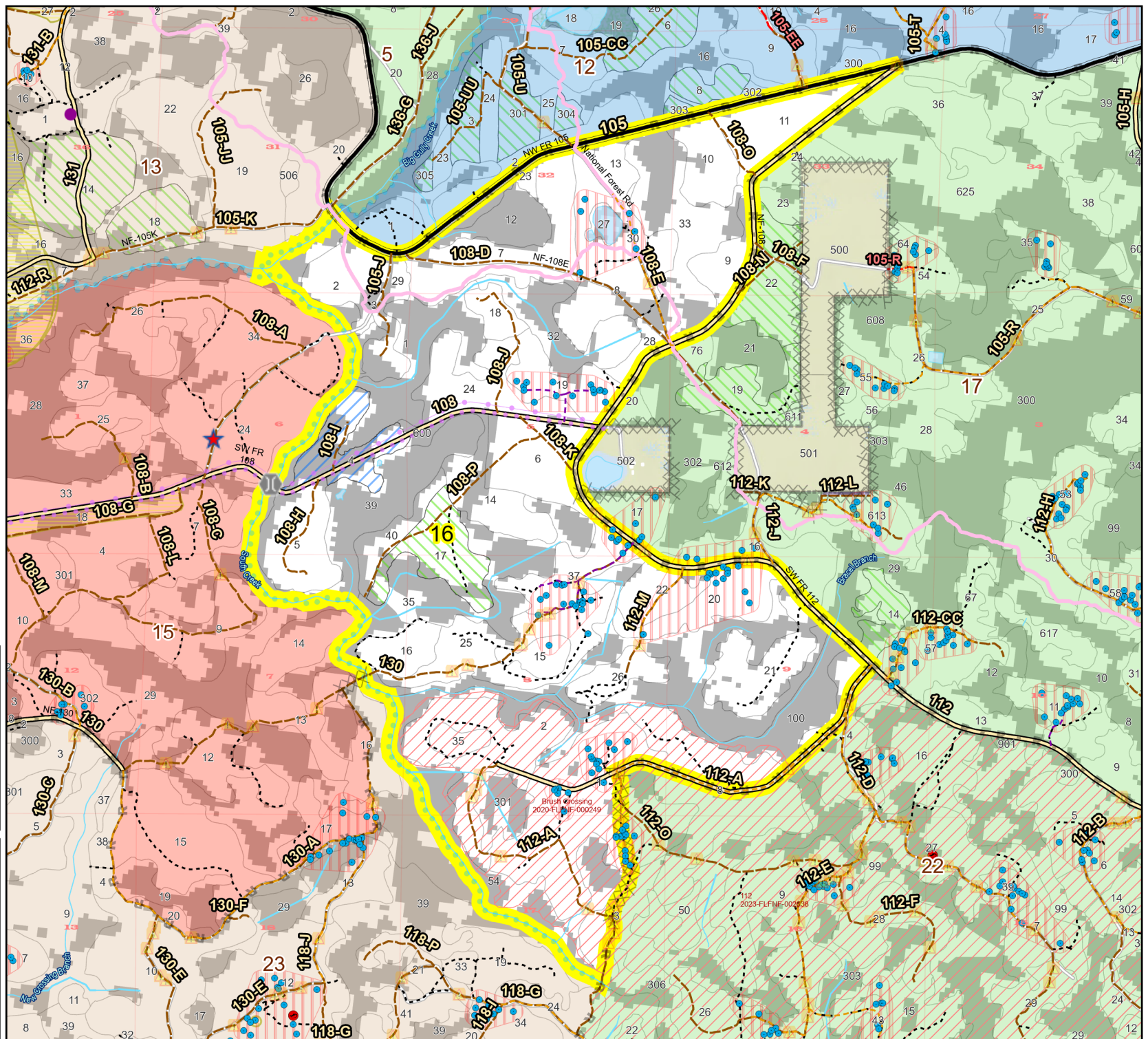
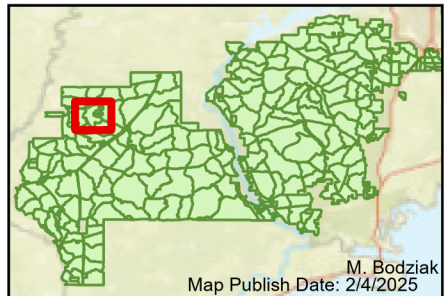


Prescribe Burn Map
 District: Apalachicola
 Apalachicola National Forest
Burn Unit 16
 2590 FACTS Reportable Acres
 1683 Burnable Acres
 Last Burned: 12/10/2015

- RCW Tree
- RCW Cluster
- No Disturbance Zone
- Apiary
- Road Erosion
- Trails
- Dozer Line
- Control Line Road
- Other Line
- Natural Feature Line
- Private Boundary Line
- access by foot
- access by utv
- Young Longleaf
- Sapling Pines
- Savannah

Burn Unit Info	
Burn Unit	Yrs. Last Burn
Private	0 - 1
USFS No Burn	> 1 - 2
	> 2 - 3
	> 3 - 4
	> 4 - 5
	> 5 - 10
	> 10 - 15
	> 15 - 20
	> 20 - 25



Age of Rough Last Updated: 11/6/2024

BurnDate	Tr.Winds	Temp	Mix Ht.
RH	Disp. Index	Wind	KBDI
DSR	RX Position	Burn Boss	