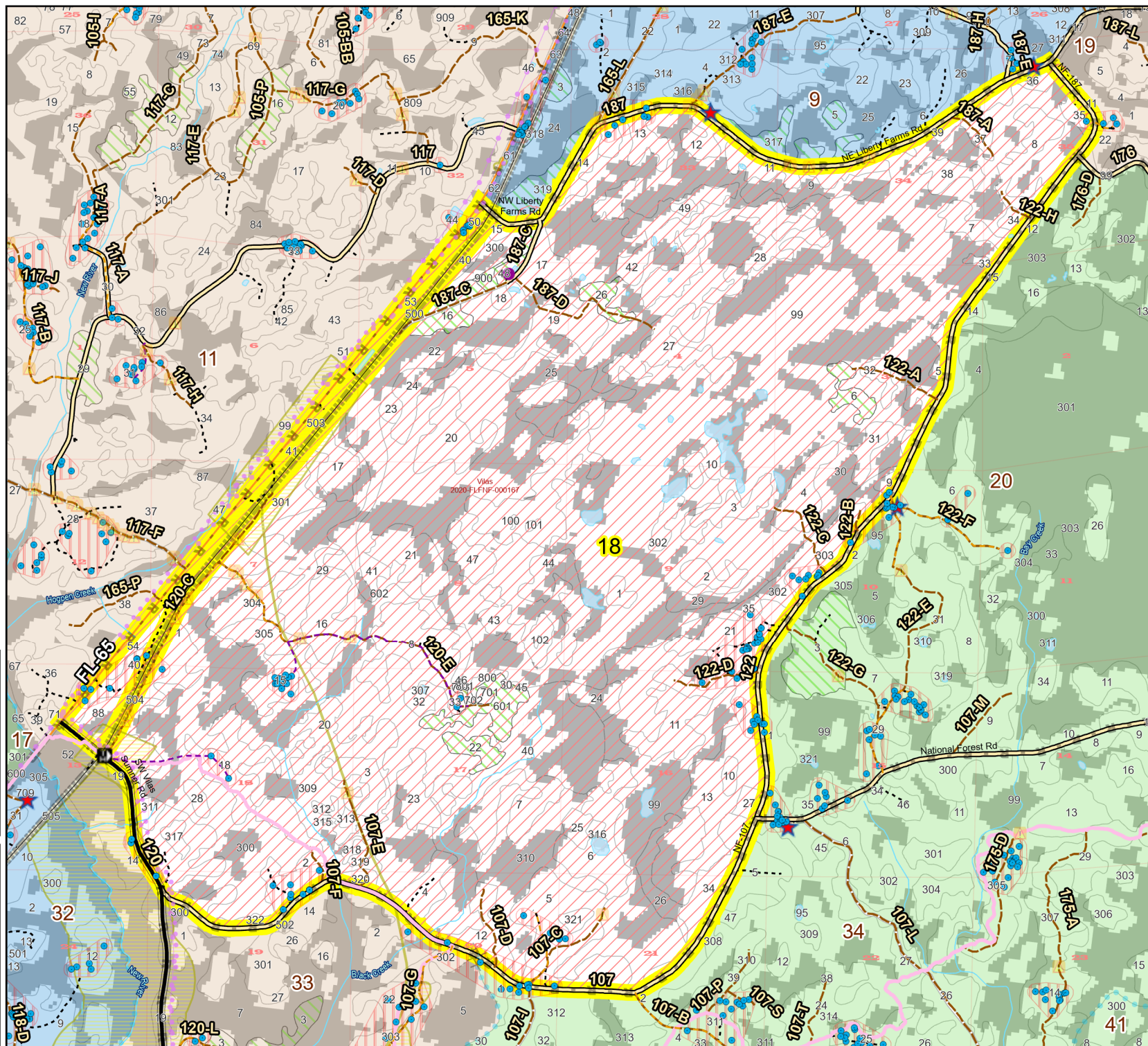
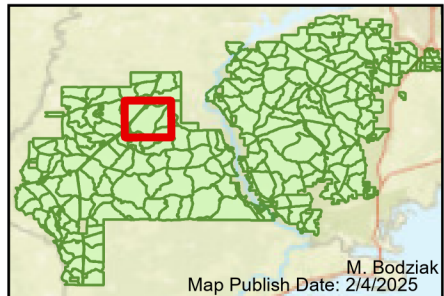


Prescribe Burn Map
 District: Apalachicola
 Apalachicola National Forest
Burn Unit 18
 7445 FACTS Reportable Acres
 5561 Burnable Acres
 Last Burned: 3/20/2023

- RCW Tree
- RCW Cluster
- Disturbance Zone
- Apiary
- Road Erosion
- Trails
- Dozer Line
- Control Line
- Road
- Natural Feature Line
- Private Boundary Line
- access by foot
- access by utv
- Sapling Pines

- Burn Unit Info**
- | | | | |
|--|--------------|--|----------------|
| | Burn Unit | | Yrs. Last Burn |
| | Private | | 0 - 1 |
| | USFS No Burn | | > 1 - 2 |
| | | | > 2 - 3 |
| | | | > 3 - 4 |
| | | | > 4 - 5 |
| | | | > 5 - 10 |
| | | | > 10 - 15 |
| | | | > 15 - 20 |
| | | | > 20 - 25 |
- Burnable Area**
- | | |
|--|---------------------------|
| | Did not burn last 27 yrs |
| | Burned during last 27 yrs |



Age of Rough Last Updated: 11/6/2024

BurnDate	Tr. Winds	Temp	Mix Ht.
RH	Disp. Index	Wind	KBDI
DSR	RX Position	Burn Boss	

