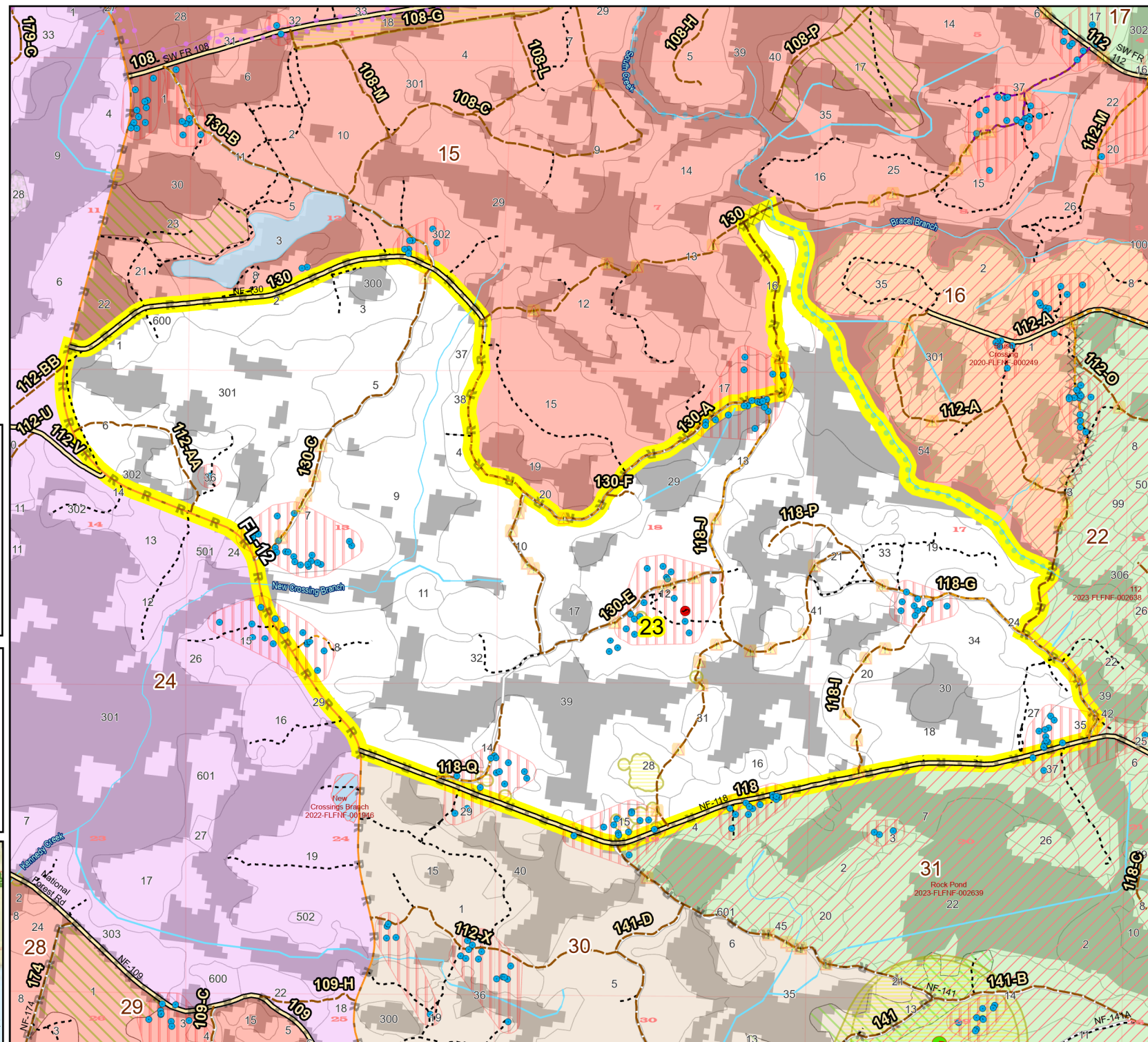
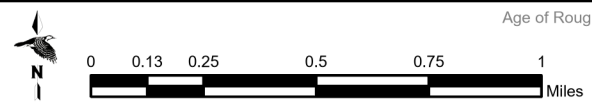
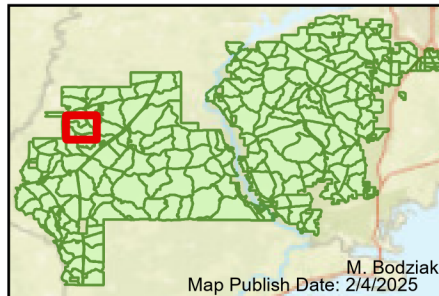


Prescribe Burn Map
 District: Apalachicola
 Apalachicola National Forest
Burn Unit 23
 2214 FACTS Reportable Acres
 1671 Burnable Acres
 Last Burned: 12/10/2020



RCW Tree	Dozer Line
RCW Cluster	Control Line
No Disturbance Zone	Road
Flatwood	Natural Feature Line
Salamander	access by foot
Potential Pond	access by utv
Road Erosion	Sapling Pines
	Savannah

Burn Unit Info	Yrs. Last Burn
Burn Unit	0 - 1
Private	> 1 - 2
USFS No Burn	> 2 - 3
	> 3 - 4
Burnable Area	> 4 - 5
Did not burn last 27 yrs	> 5 - 10
Burned during last 27 yrs	> 10 - 15
	> 15 - 20
	> 20 - 25



Age of Rough Last Updated: 11/6/2024

BurnDate _____	Tr.Winds _____	Temp _____	Mix Ht. _____
RH _____	Disp. Index _____	Wind _____	KBDI _____
DSR _____	RX Position _____	Burn Boss _____	